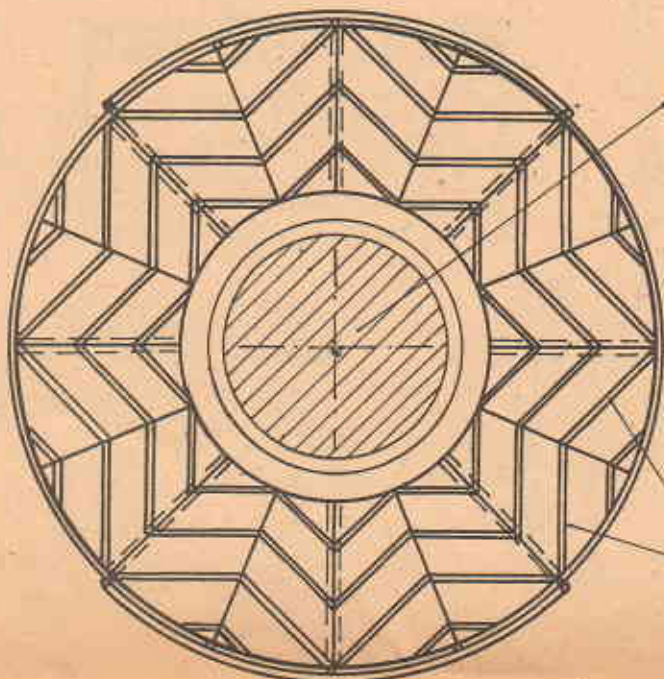
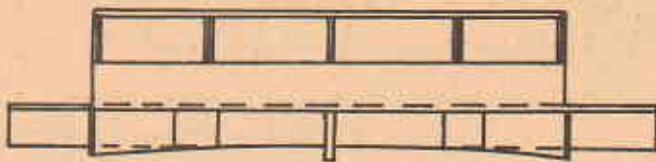
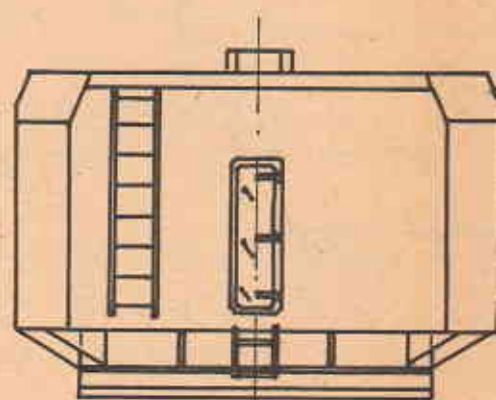
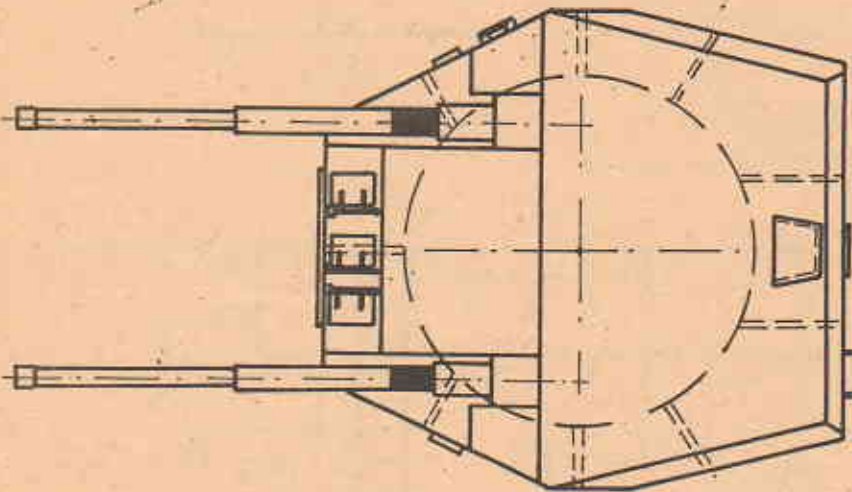
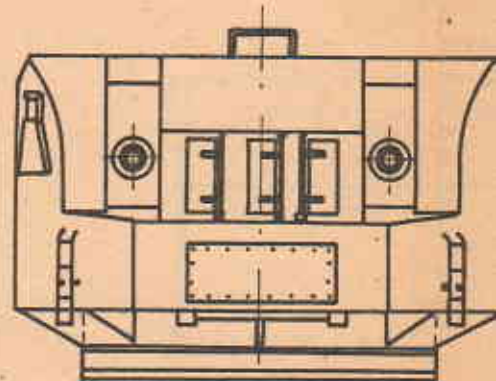
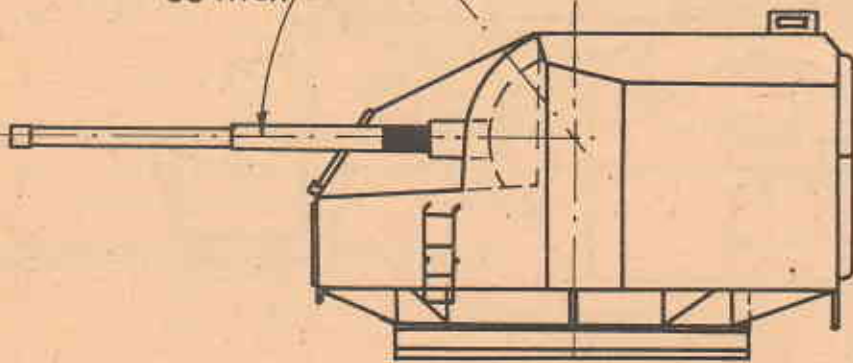


50° max

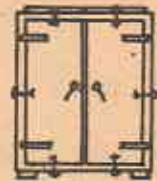


122

pasy blachy

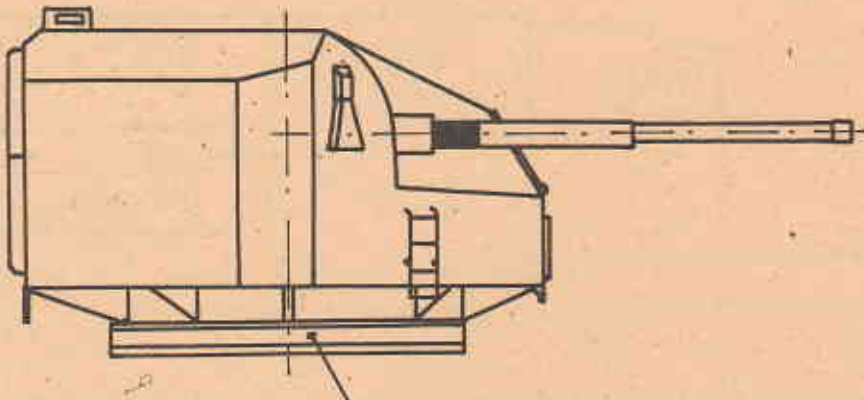
56

1 szt



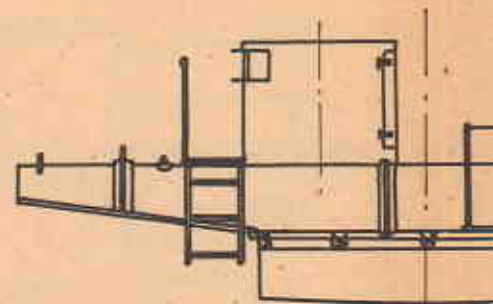
57

4 szt

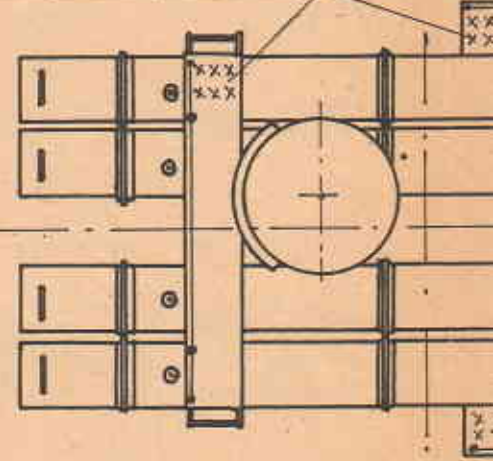


nieruchoma część
podstawy wieży

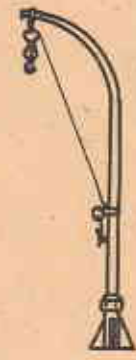
53
3 szt



blachy z napawaniem



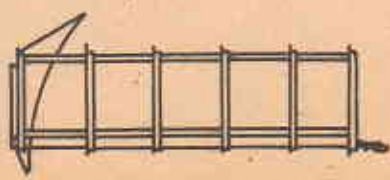
40
1 szt



39
2 szt



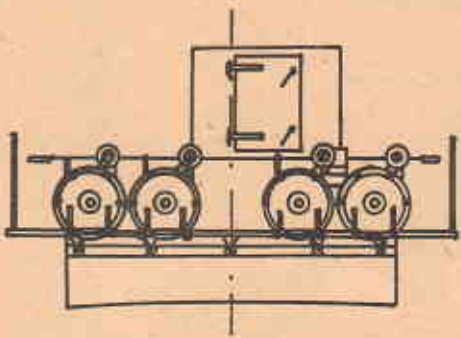
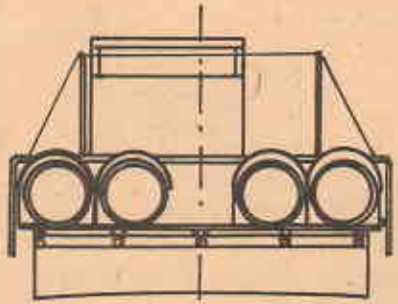
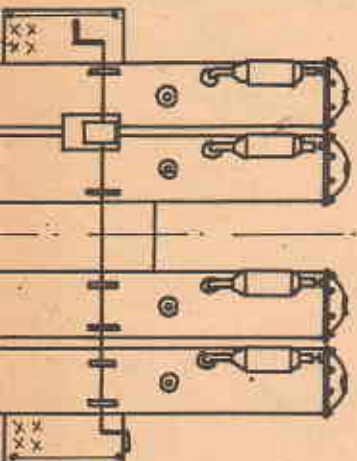
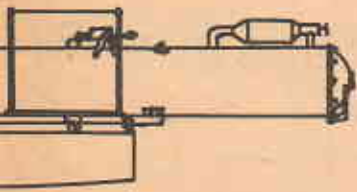
33
1 szt



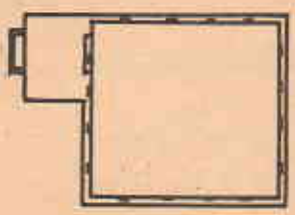
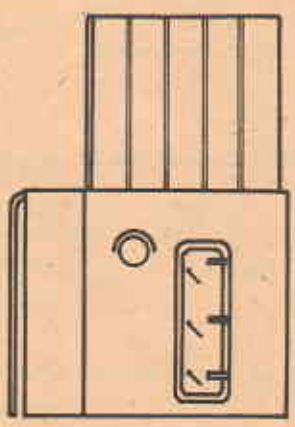
60
2 szt



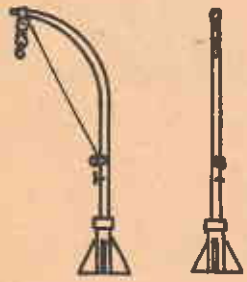
WIDOK
FRAGM
(spawa



54 1szt

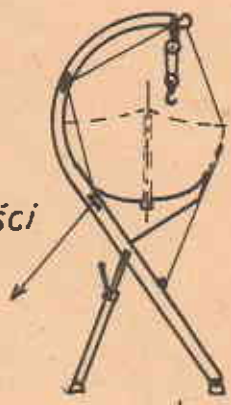


121

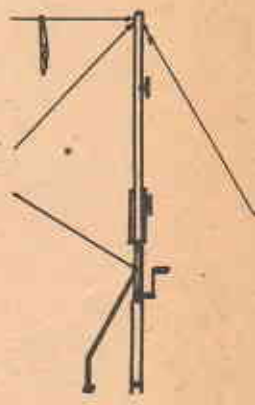


36

2 szt



do części nr. 45



46

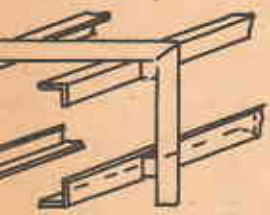
2 szt

wykonać jako prawy i lewy



38

2 szt



22 szt

BOMBA GŁĘBINOWA

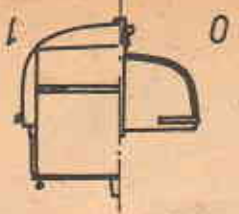


8 szt

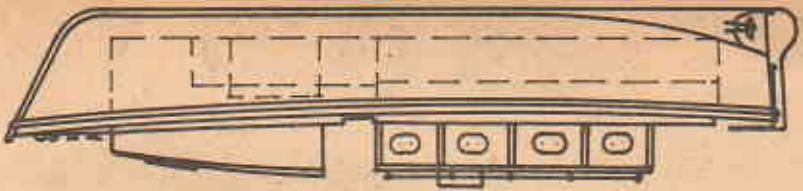
ŁYŻKA BOMBY GŁĘBINOWEJ

...K NA
...MENT WYRZUTNI
(...ana z kątowników)



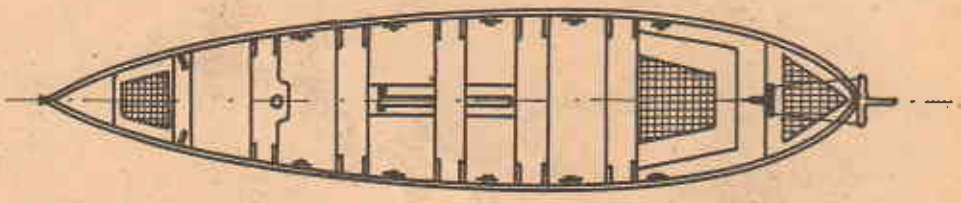


PRZEKROJE

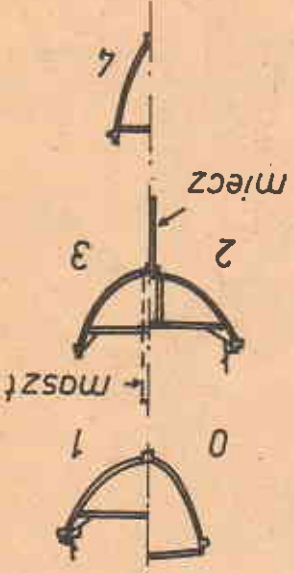


46a 1 szt

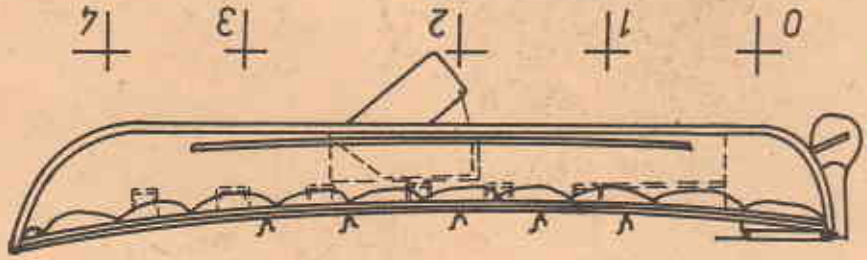
Wiosła - 10 + 6 szt



2 szt
oko
wmy

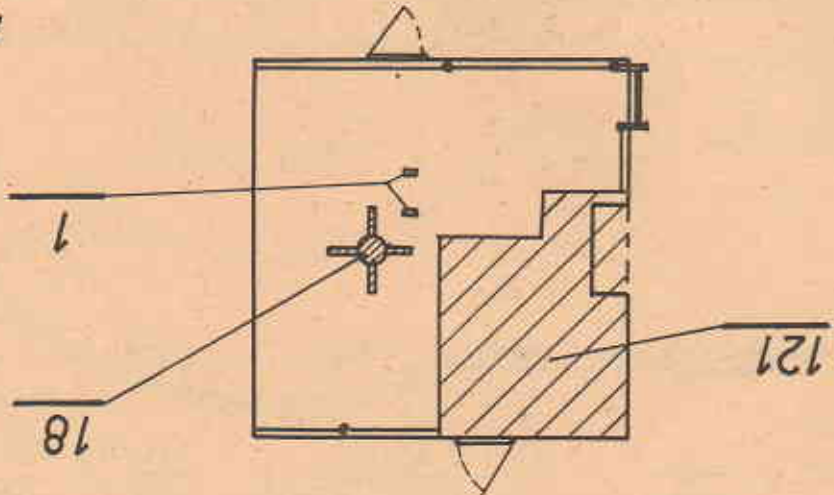


PRZEKROJE



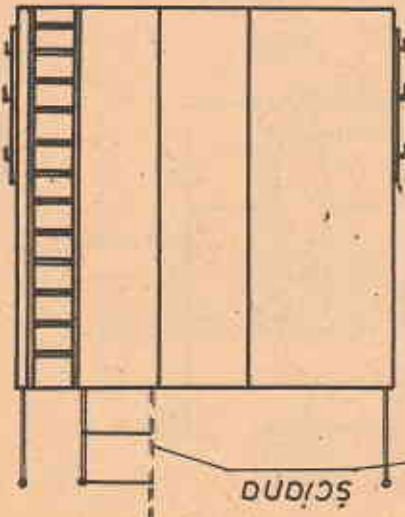
1 szt

2

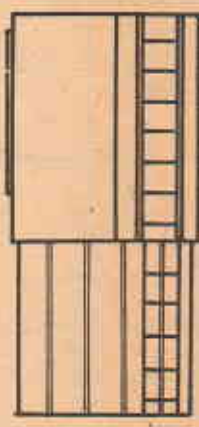
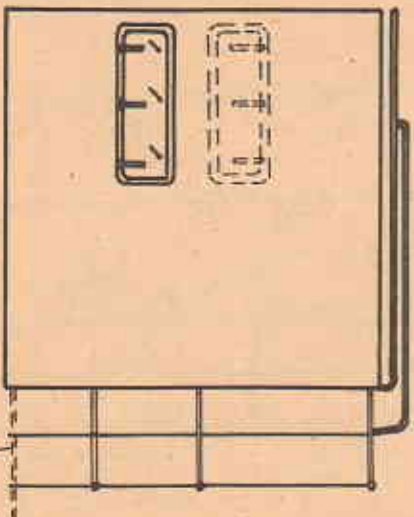


1 szt

21



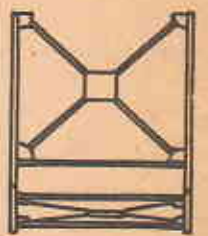
ściana



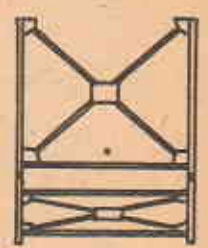
POLSKI NISZCZYCIEL - II wojna światowa		MM Ld 7	Podziatka: 1:75	Mirostaw MIARKA Opracował i kreślił:	Nr. arkusza: 6	Ilość ark. 6
ORP "ORKAN"			Data: 1983 r.			

Wykonac jako
prawe i lewe

28 2 szt



26 2 szt



51 1 szt



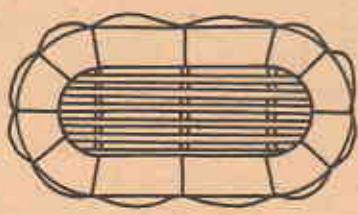
2 szt
jako
lewy

Podziatka liniowa dla skali 1:75

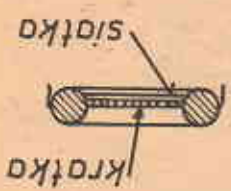
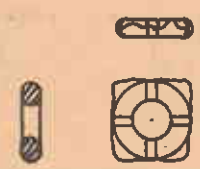


TRATWA
RATUNKOWA

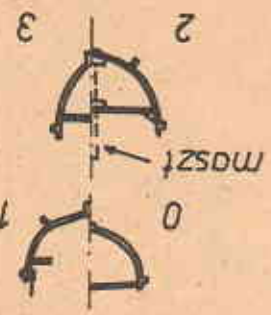
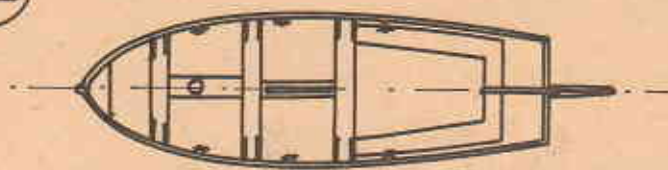
6 szt



KORO
RATUNKOWE
8 szt

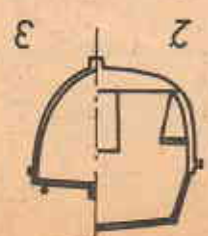
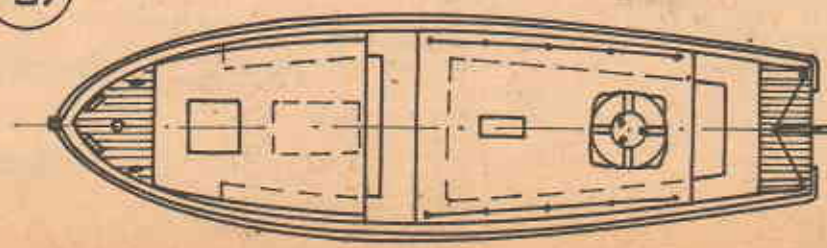


51a 1 szt



PRZEKROJE

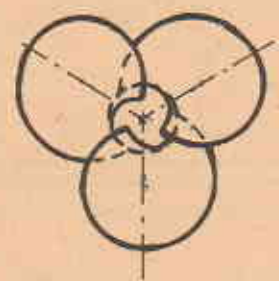
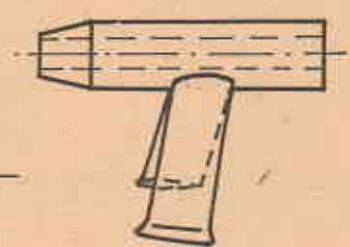
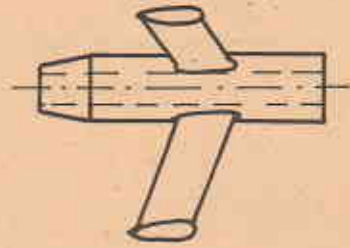
47a 1 szt



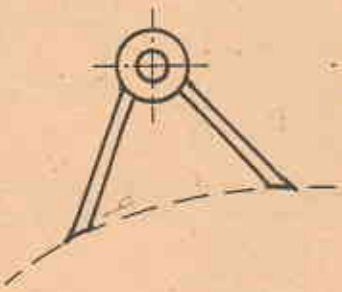
WYKONAĆ ZE SKRETEM
LEWYM I PRAWYM

2 szt

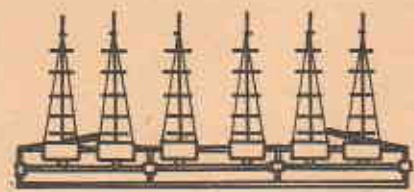
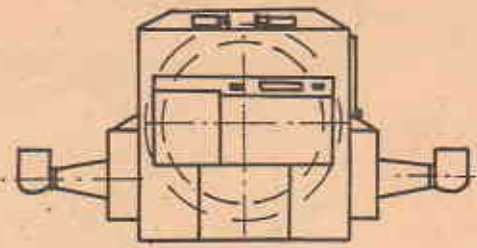
125



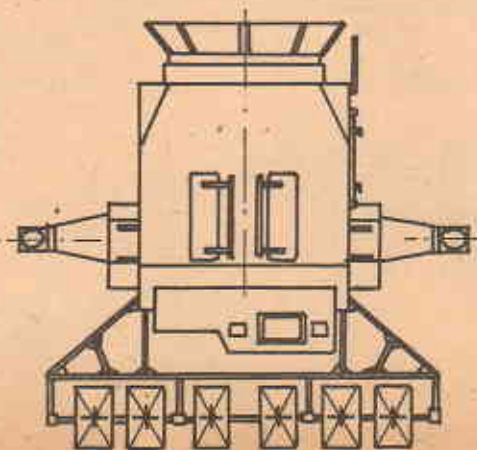
WYKONAĆ JAKO
LEWE I PRAWY



WIDOK
DALMIERZA
BEZ RADARU

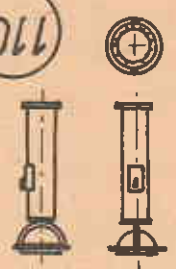


WIDOK RADARU



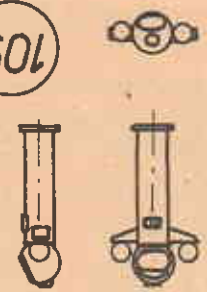
1 szt

110



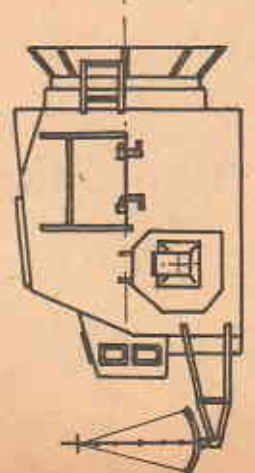
1 szt

109



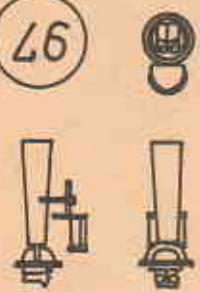
1 szt

95



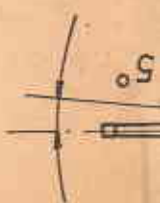
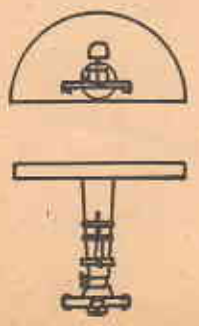
2 szt

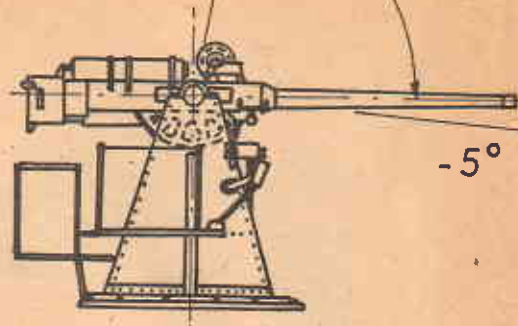
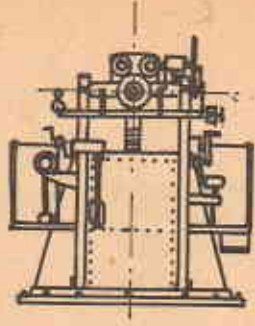
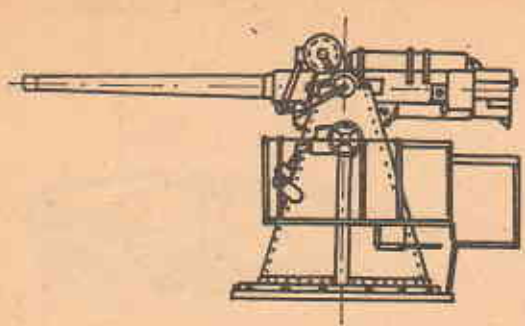
97



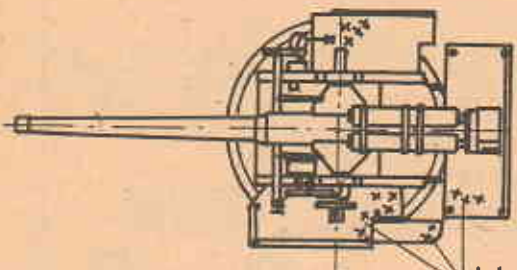
2 szt

96





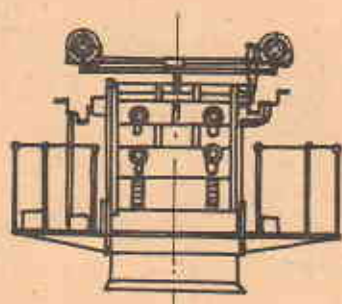
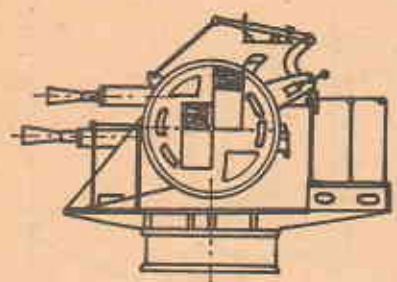
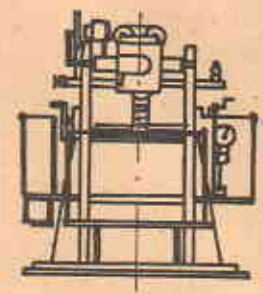
-5°



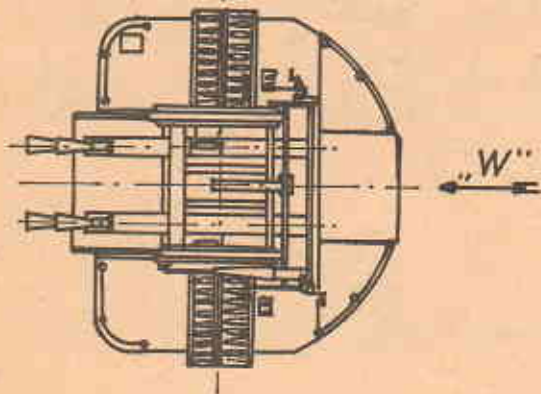
122

1 szt

blachy z napawaniem



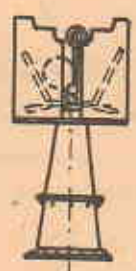
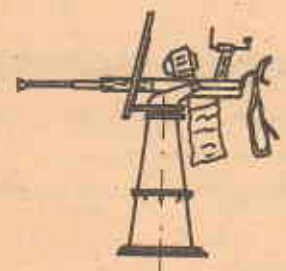
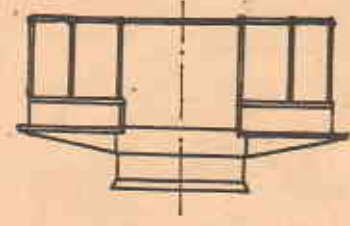
WIDOKI DZIAŁKA
40 mm - 4 szt



WIDOK „W”

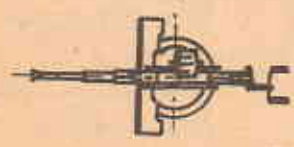
81

1 szt



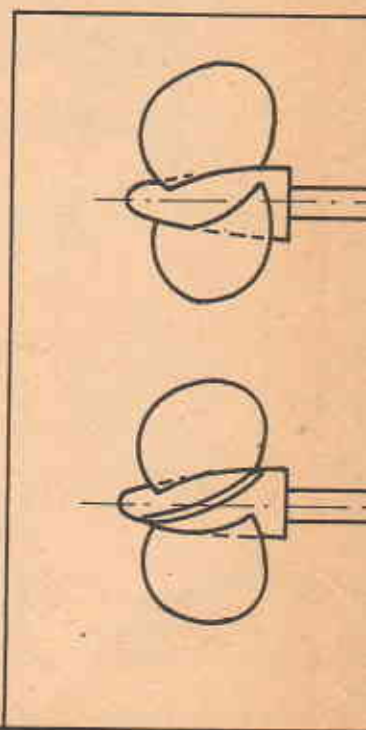
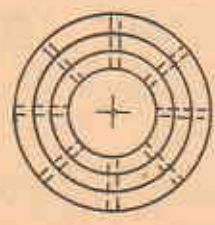
55a

6 szt
z drewna



55

6 szt

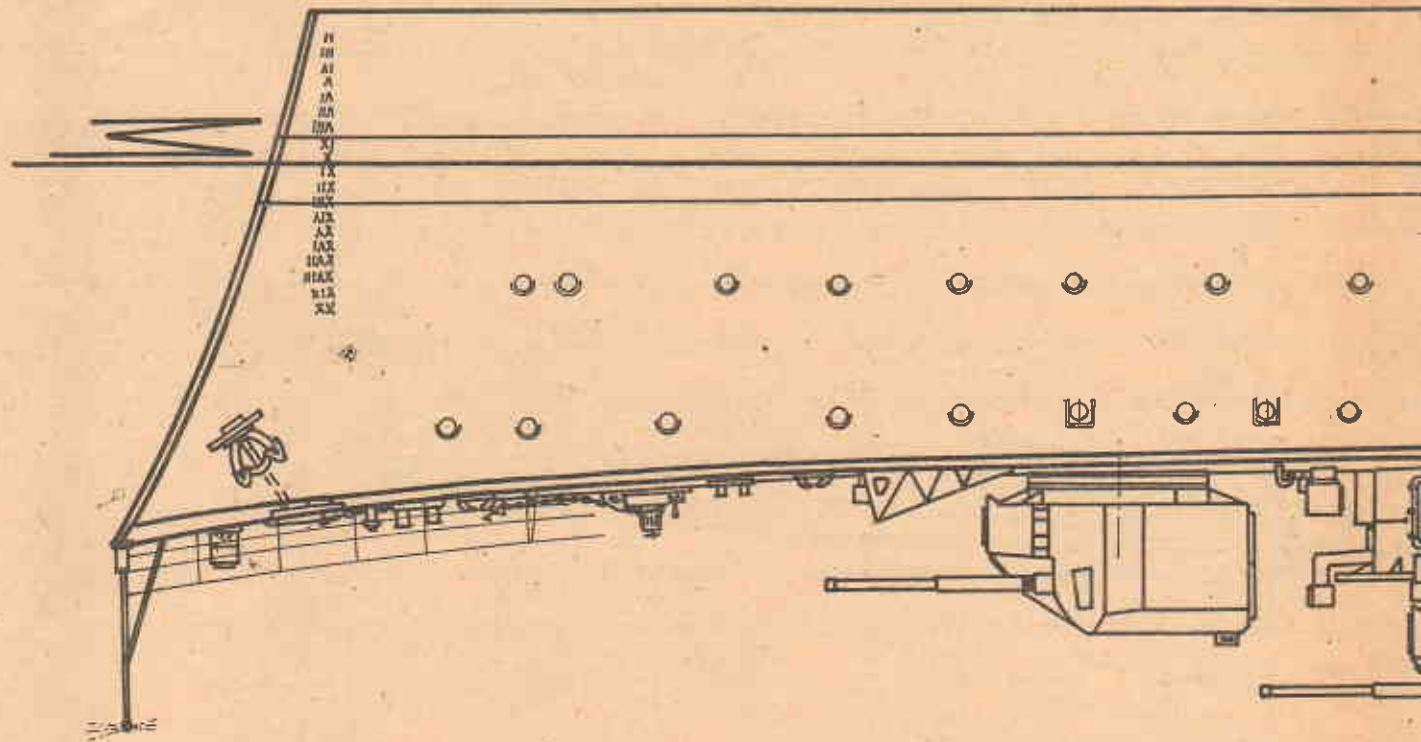


9




10

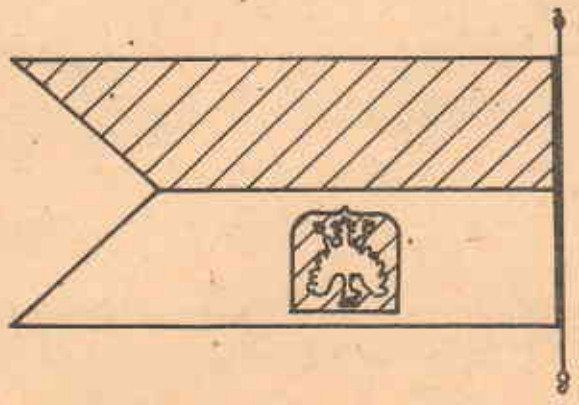
11

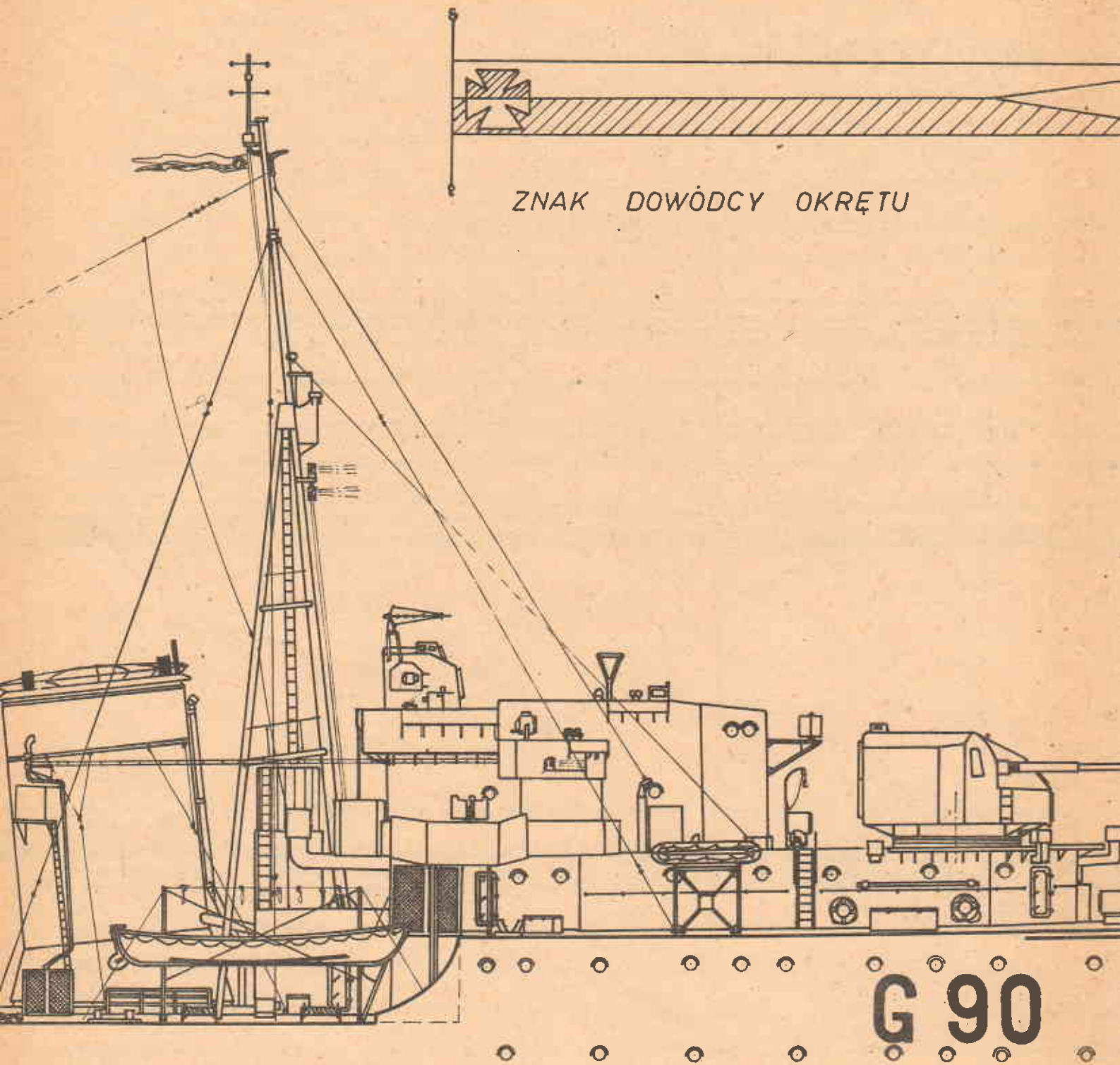
12



BANDERA POLSKIEJ
MARYNARKI WOJENNEJ

- BIALY 
- CZERWONY 
- ZŁOTY 





ZNAK DOWÓDCY OKRĘTU

G 90

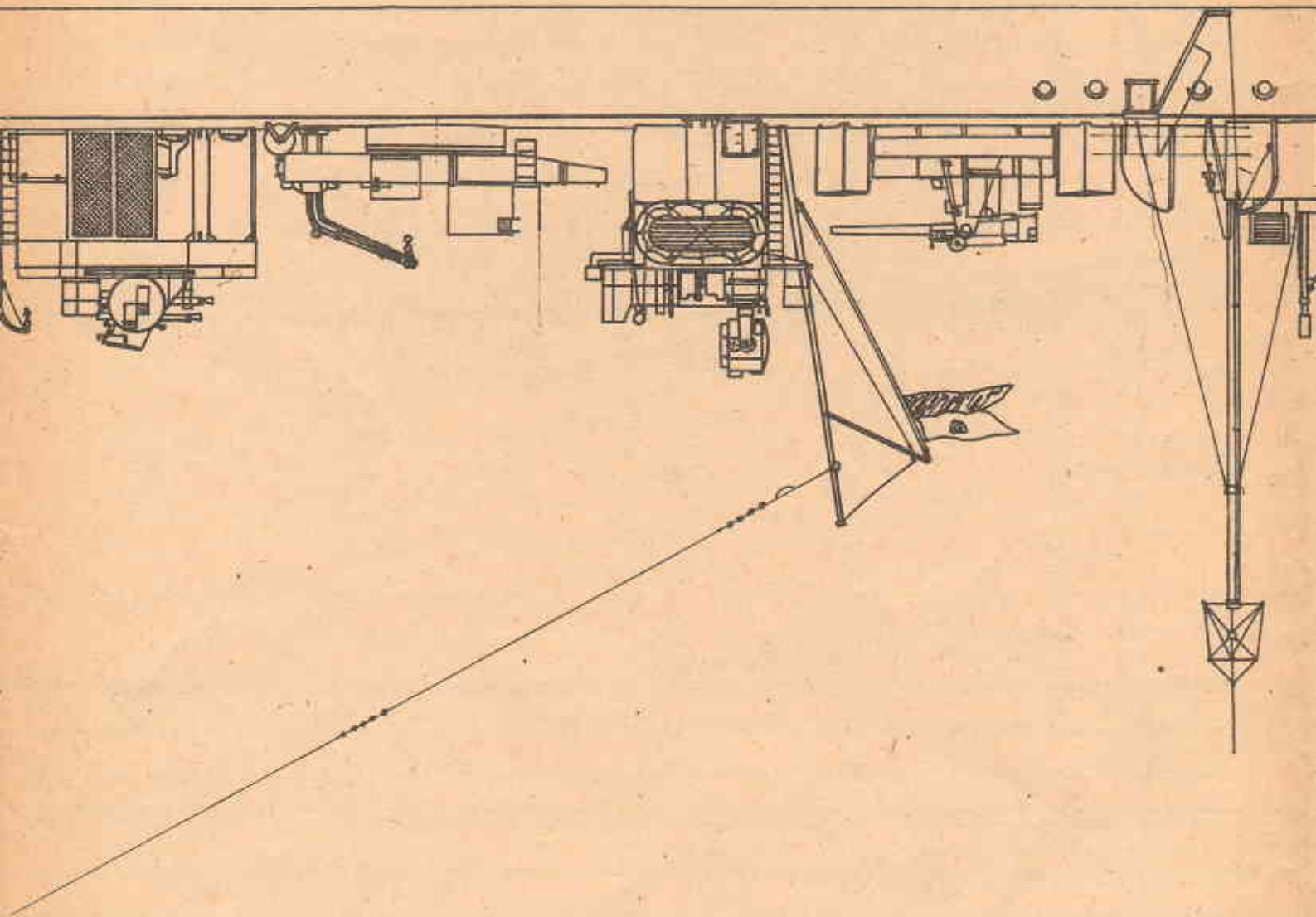
| 6

| 7

| 8

5



7

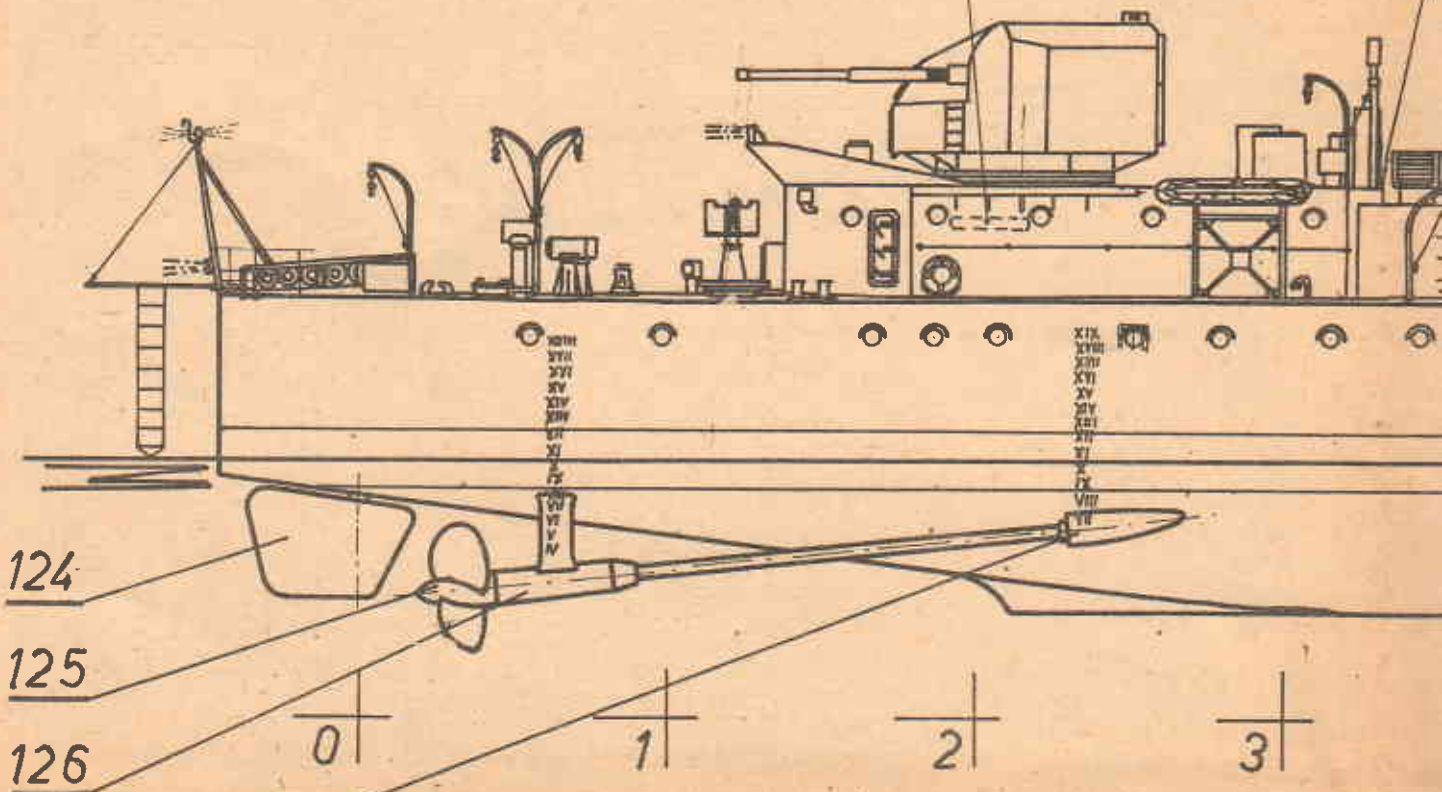


UWAGA:
W CELU ZACHOWANIA PRZEJRZYSTOŚCI
RYSUNKU GENEALNEGO POMINIĘTO
RELING ORAZ INNE DROBNE DETALE.

TABLICA Z NAZWĄ OKRĘTU
WYSTĘPUJE TYLKO W CHWILI PRZEKAZANIA

ORKAN

-  NATURALNY KOLOR DREWNA
 ŻŁOTY



MM
Łódź 2

Data: 1983r.

Podziałka: 1:150

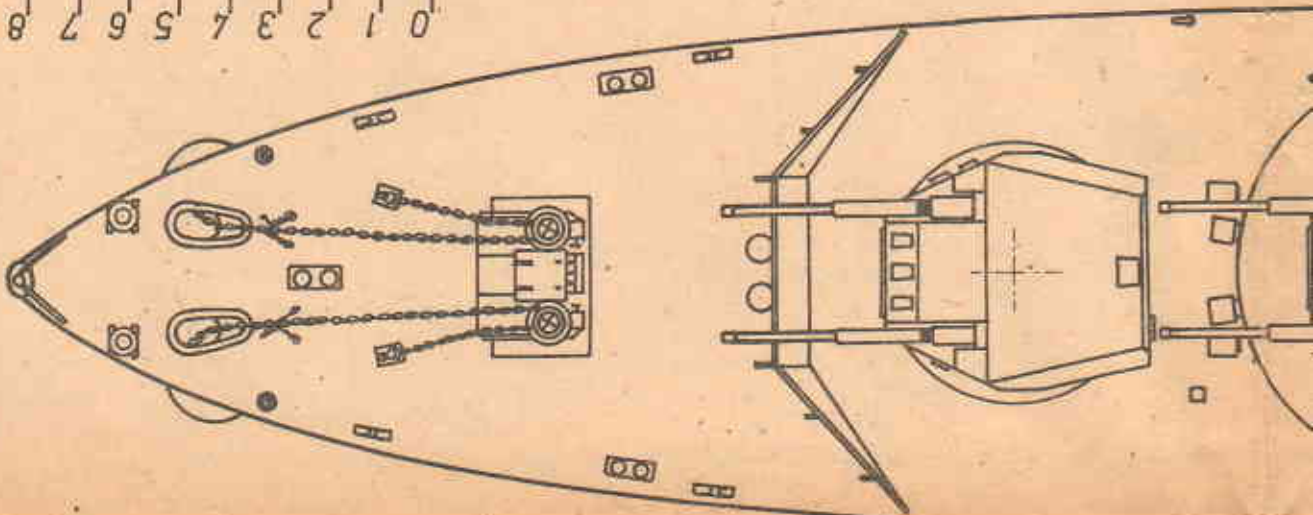
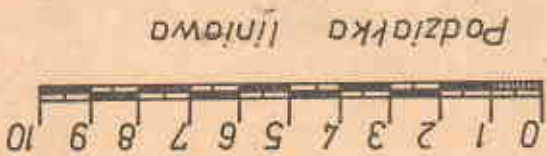
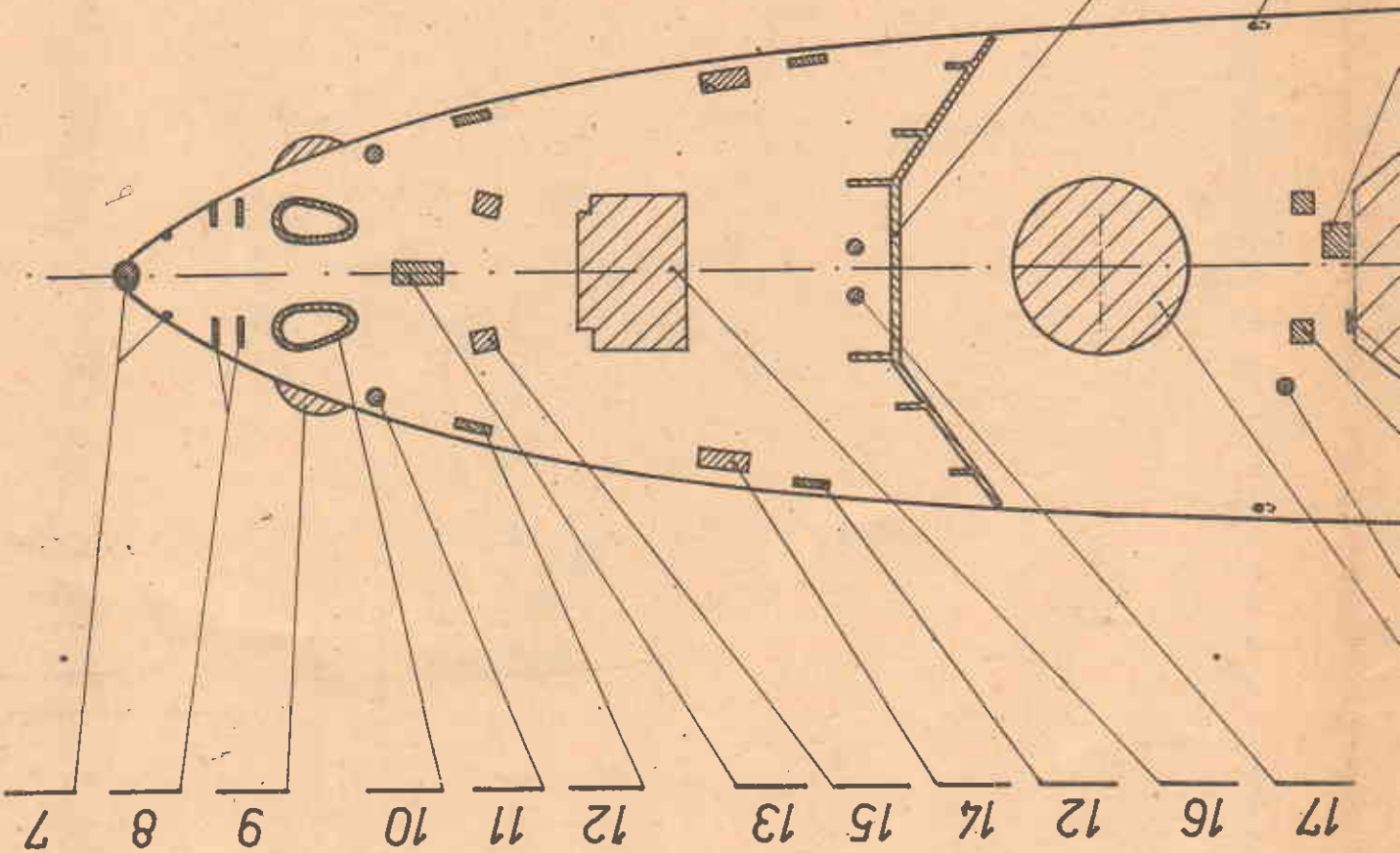
Opracował i kreślił:

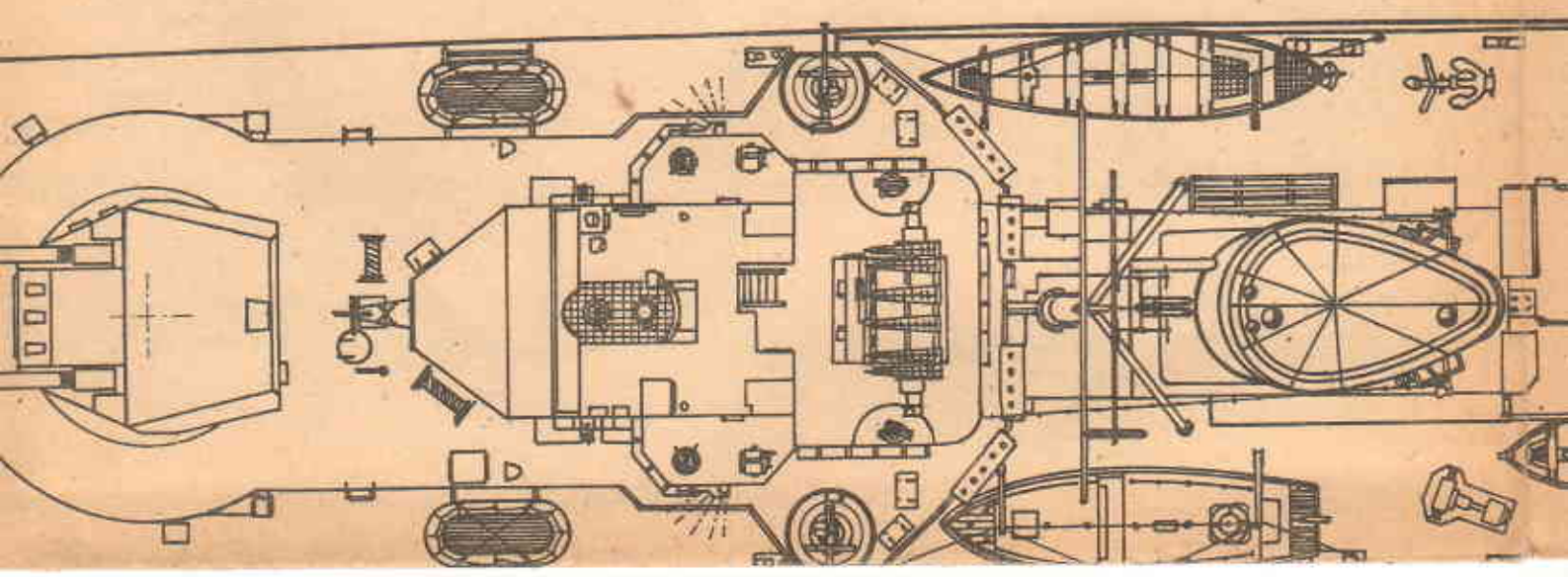
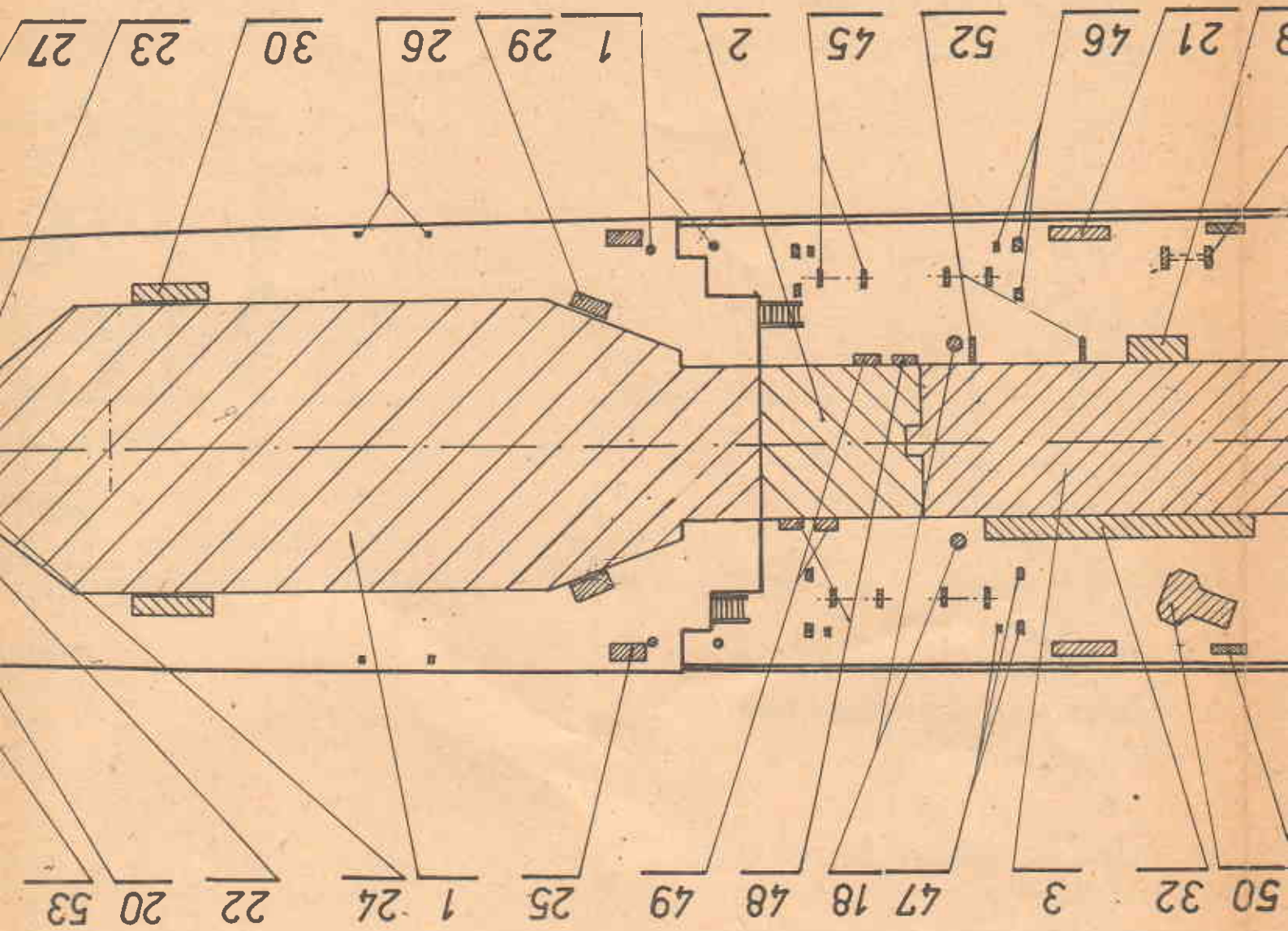
Mirosław MIARKA

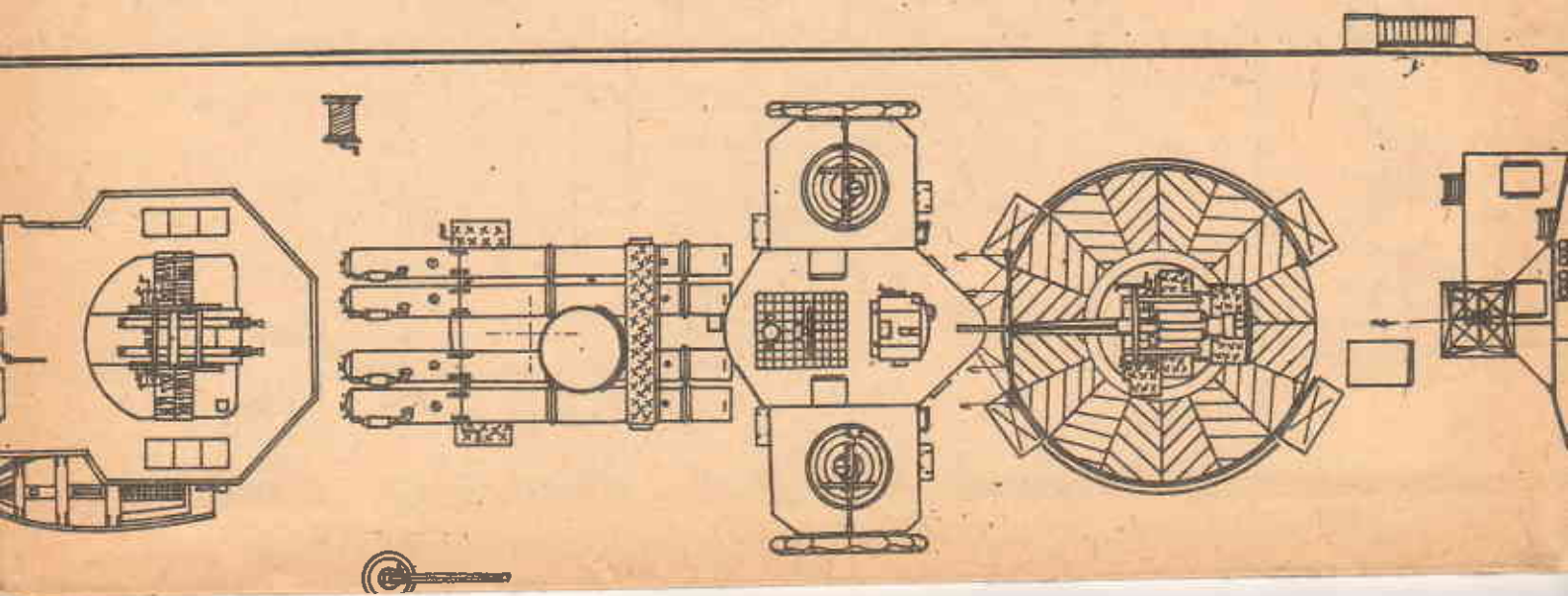
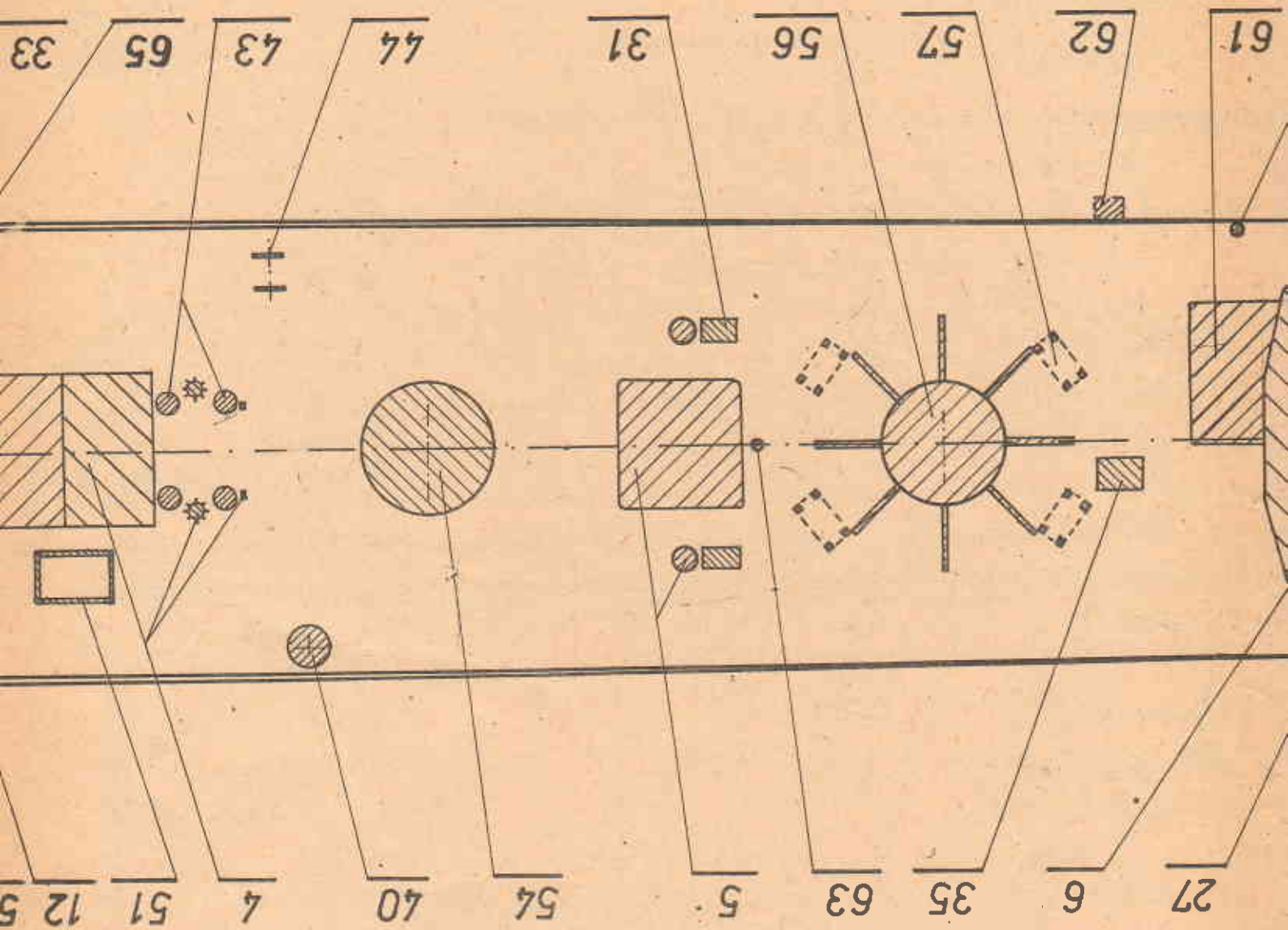
Ilość ark. 6

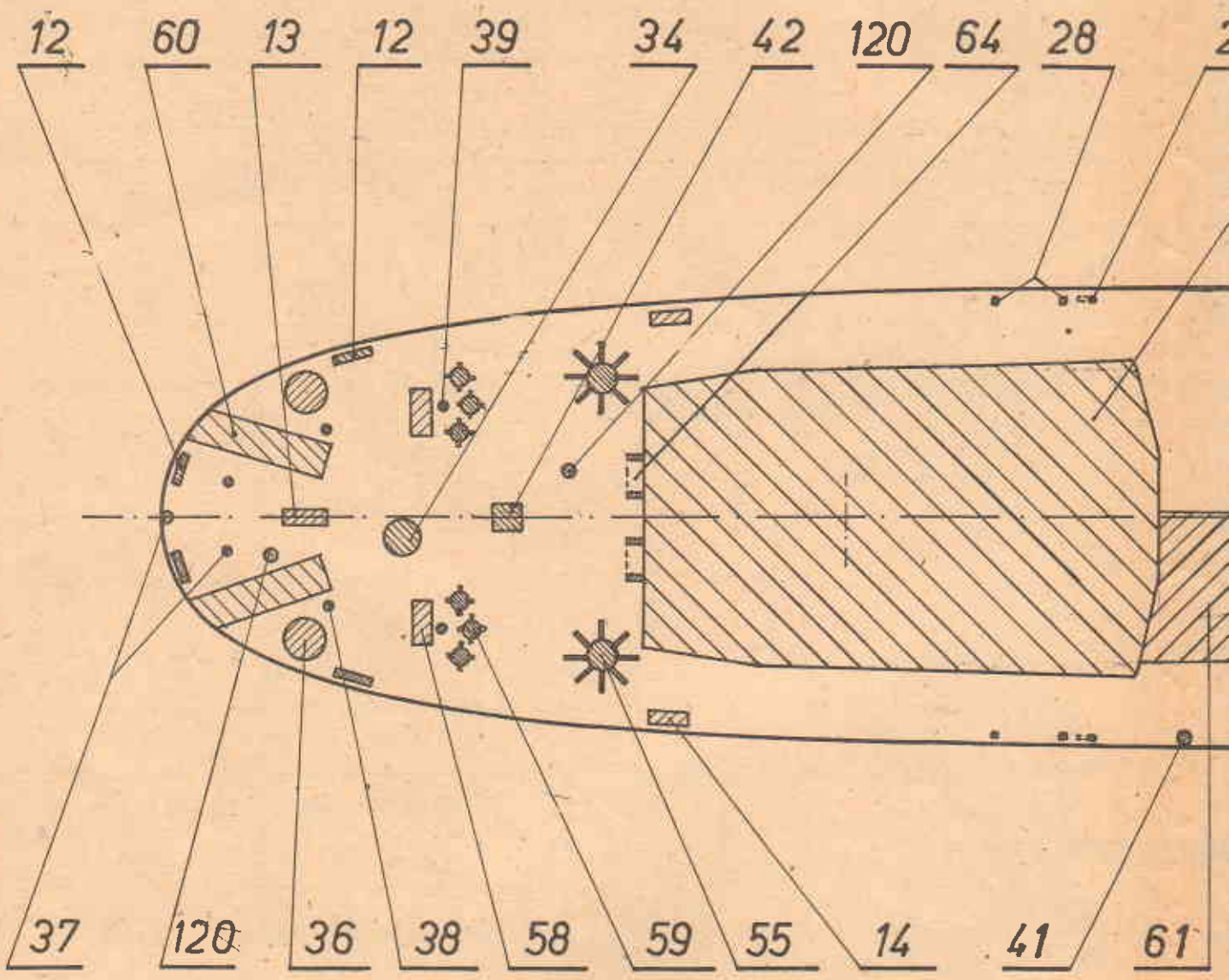
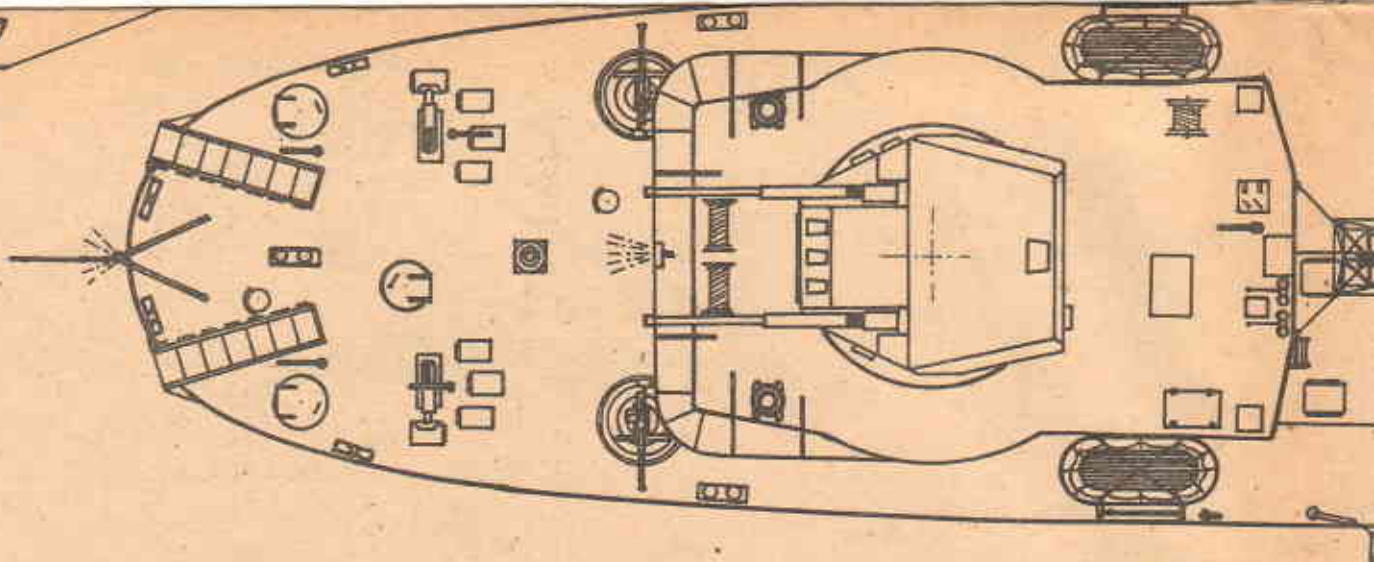
Nr. arkusza: 1

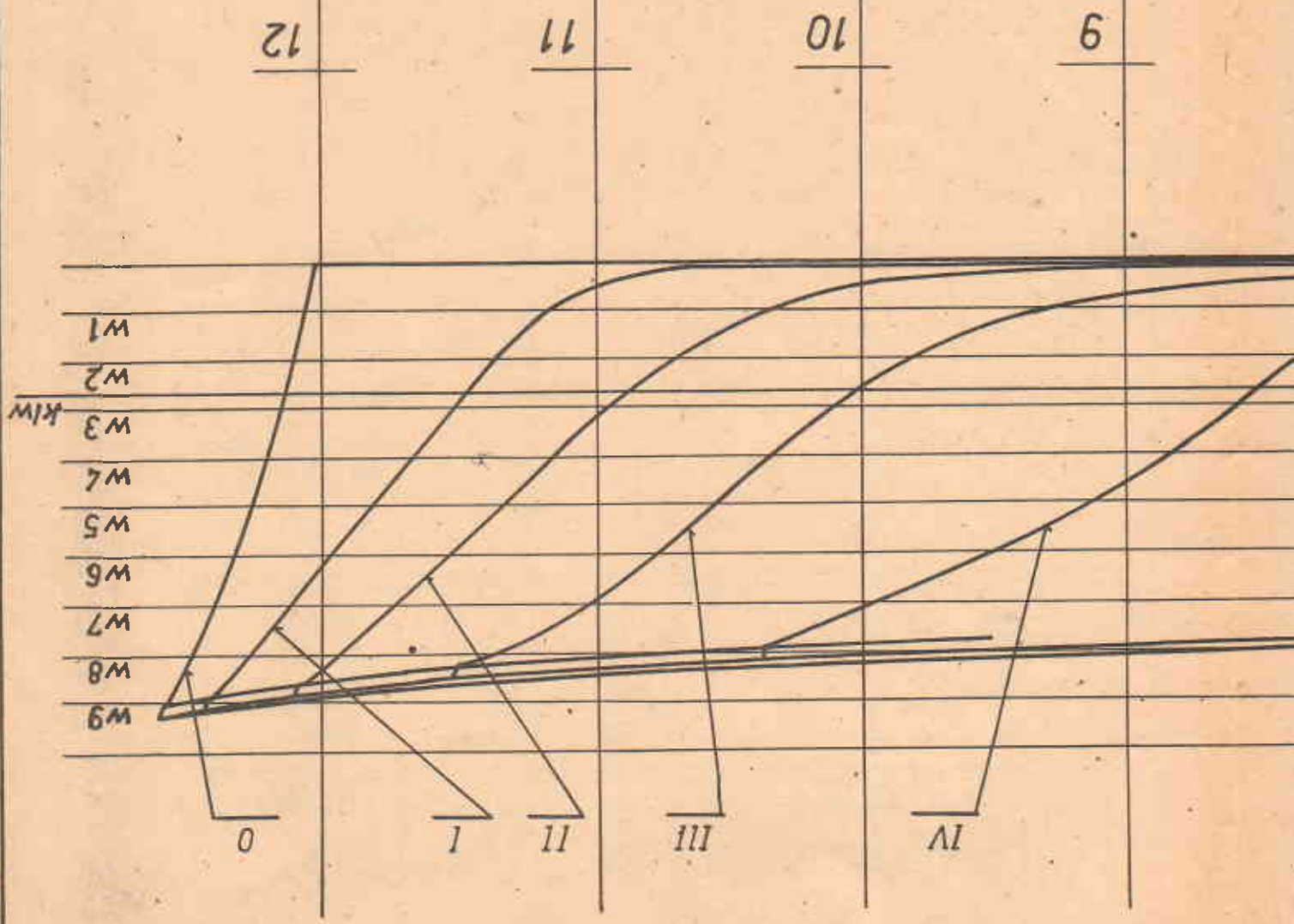
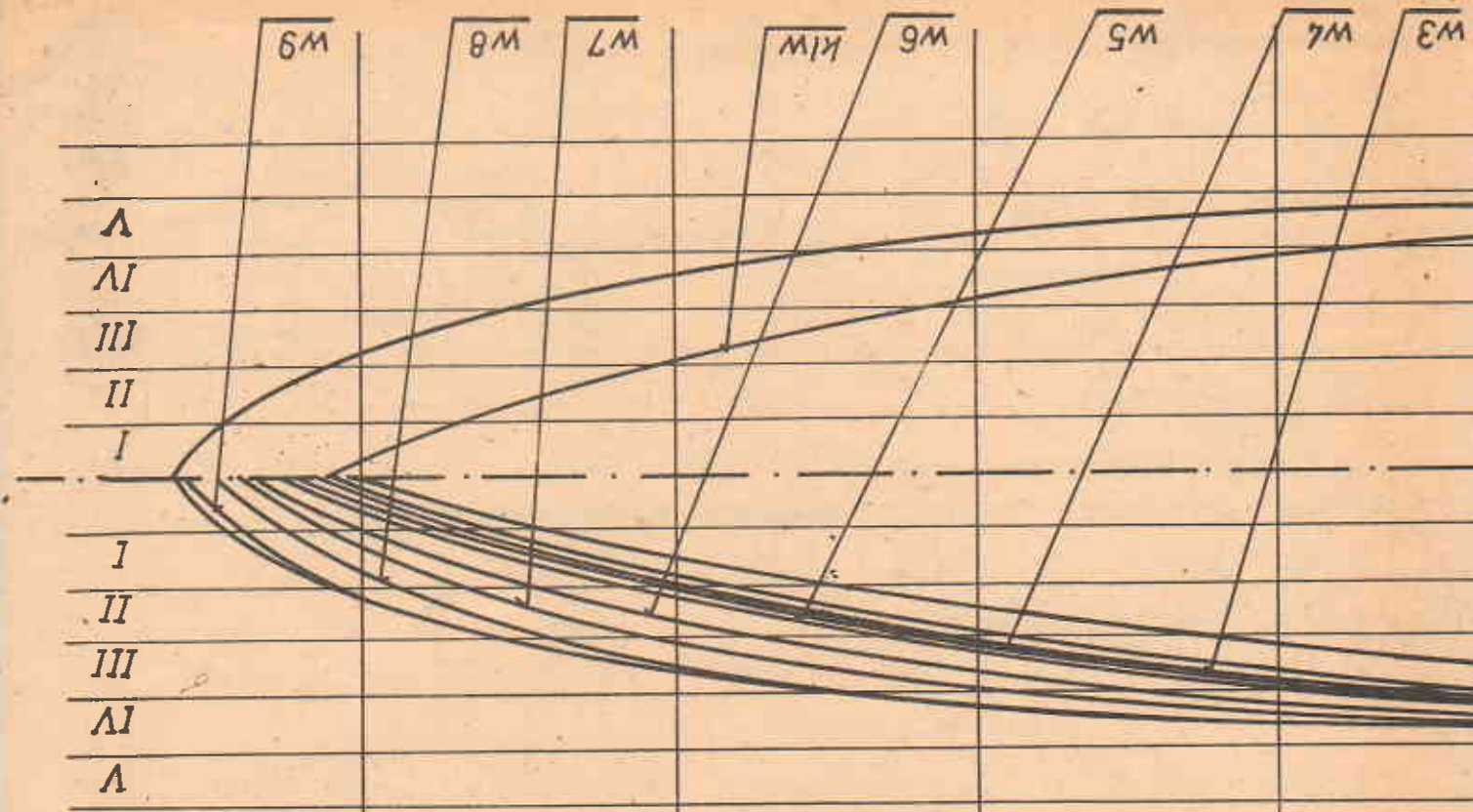
POLSKI NISZCZYCIEL - II wojna światowa
ORP „ORKAN”







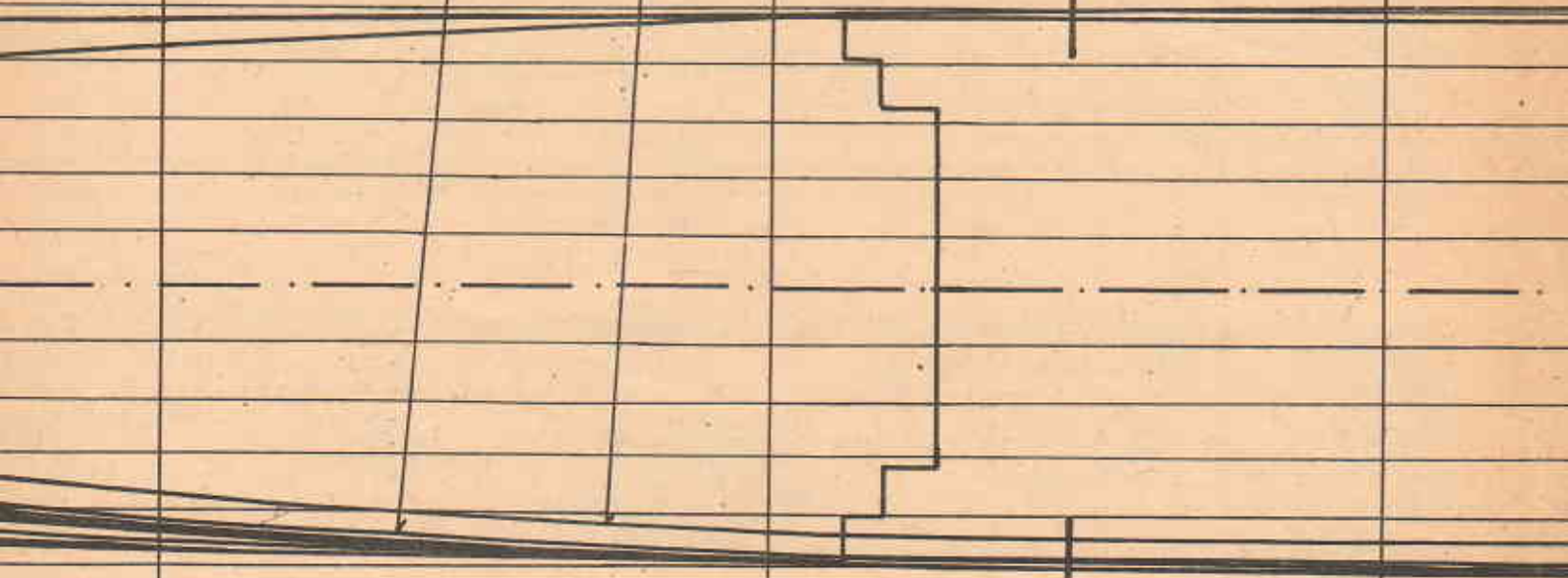




W3

W2

W1



8

7

6



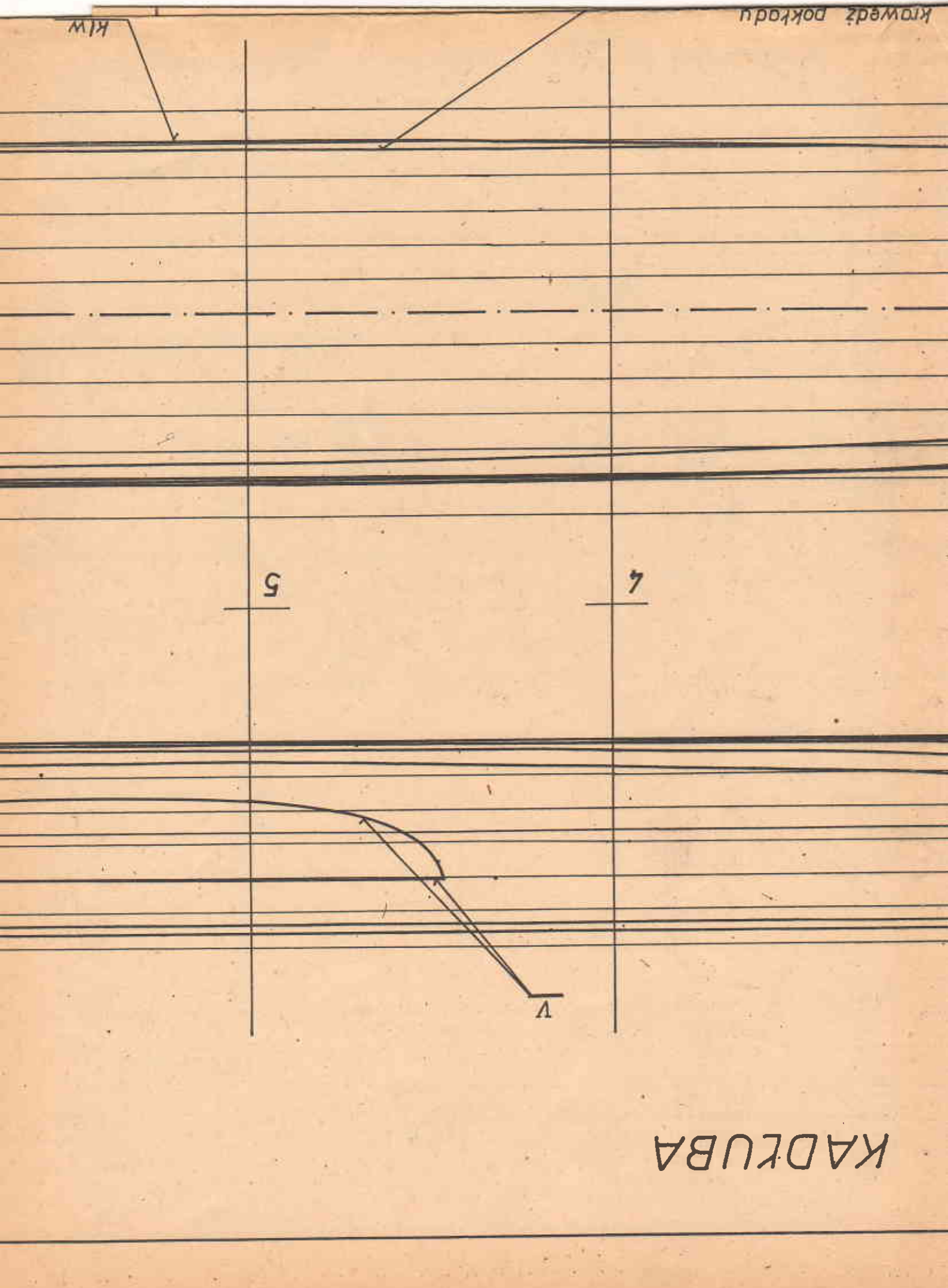
klw

5

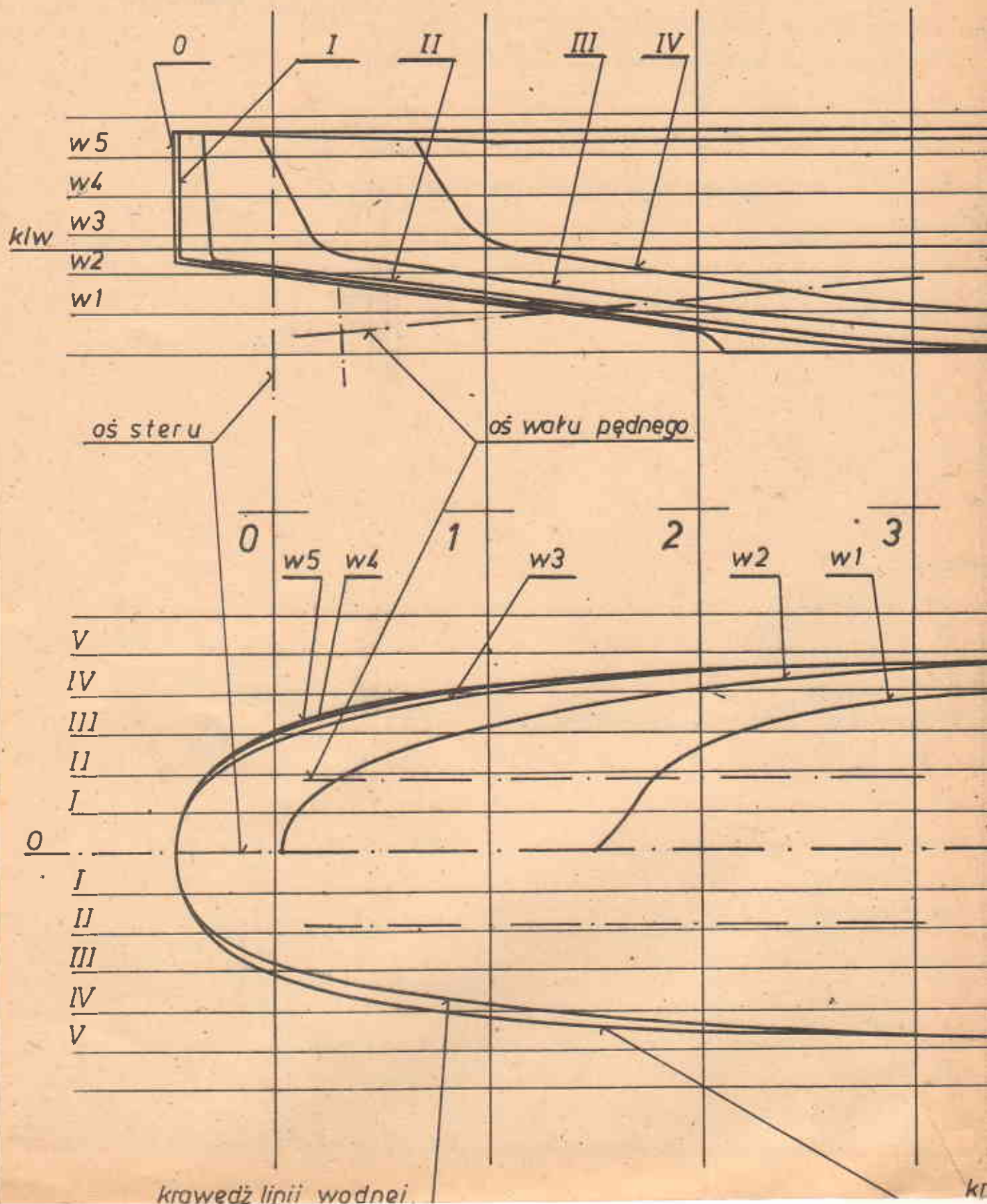
7

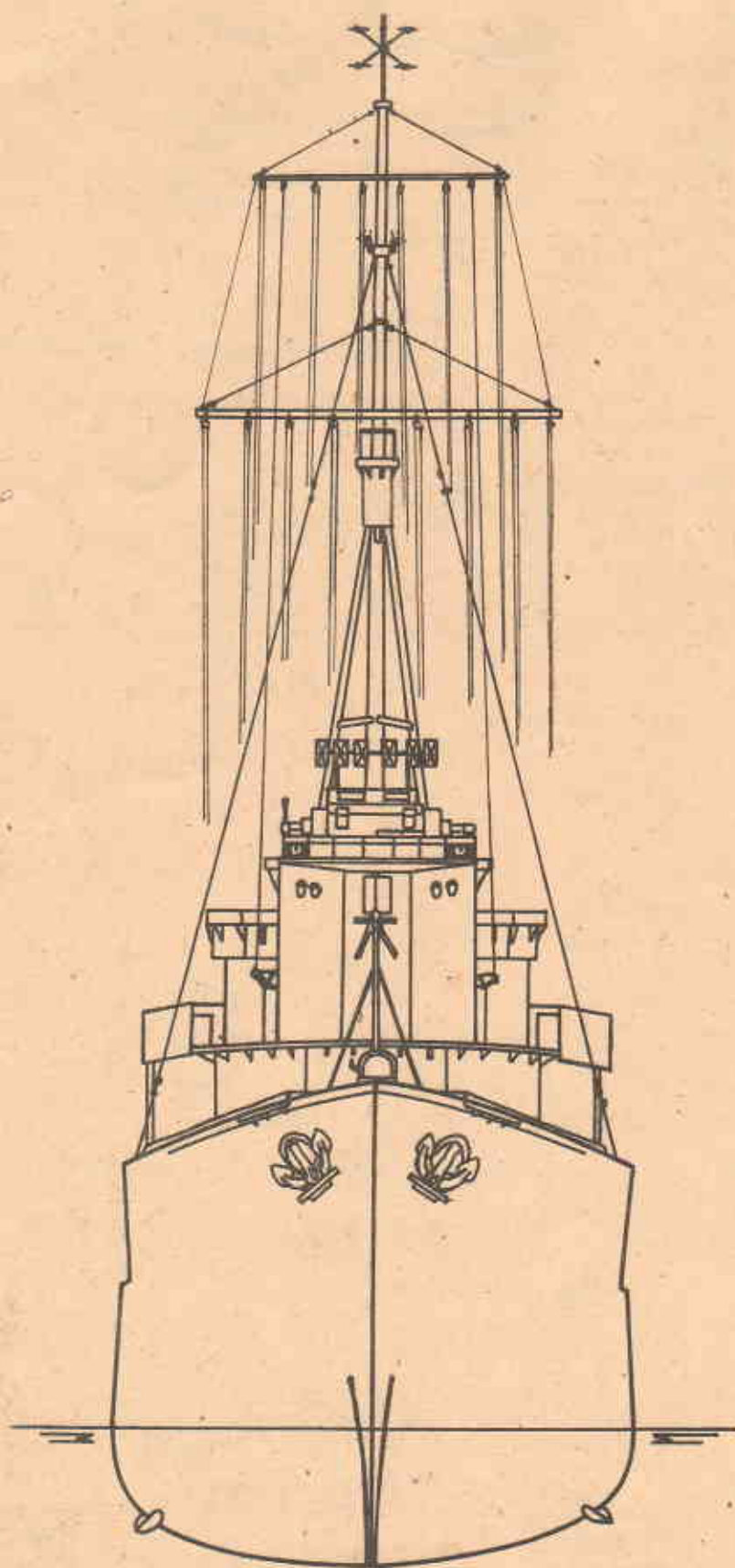
v

KADYUBA



LINIE TEORETYCZNE

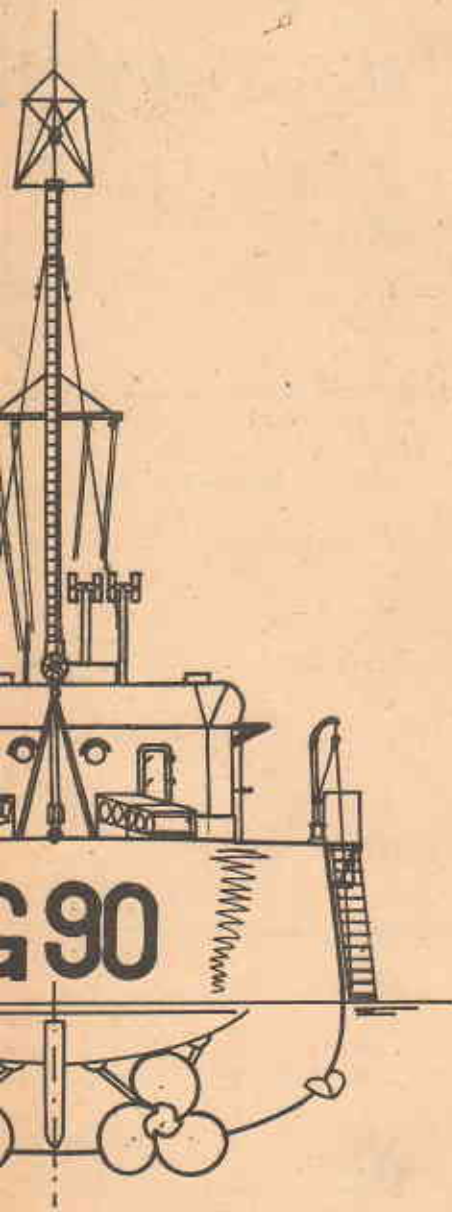




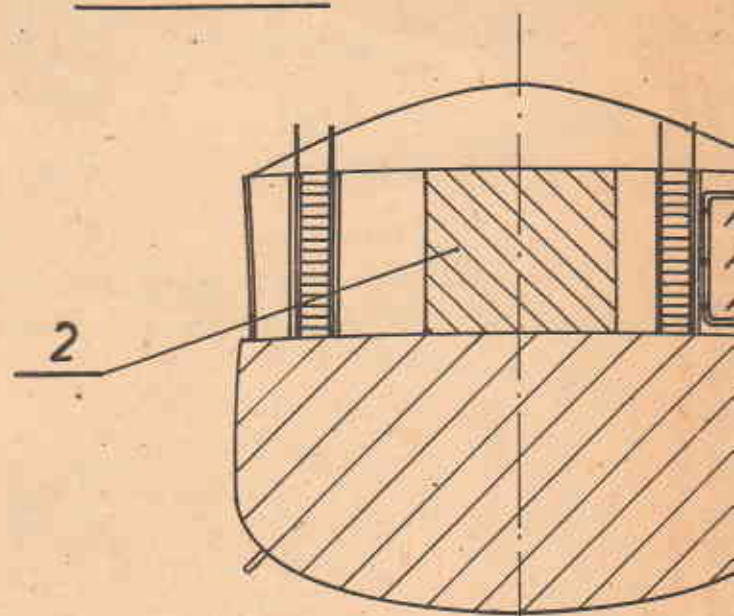
UPROS
OD DZI
(bez uz
poklad



ZCZONE WIDOKI
IOBU I RUFY
zbrojenia i wyposażenia
(tu)



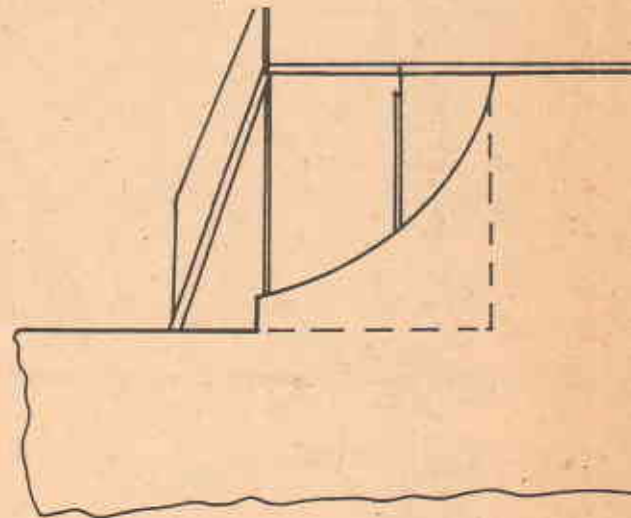
A — A



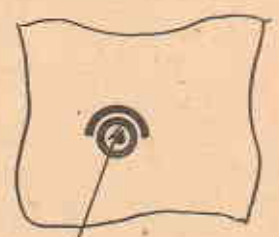
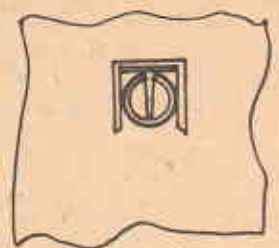
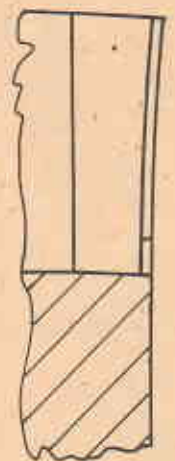
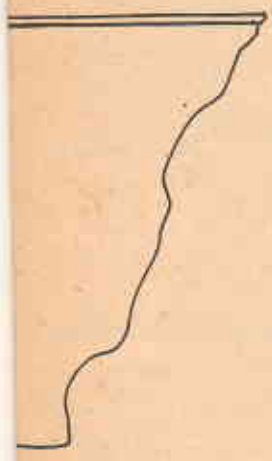
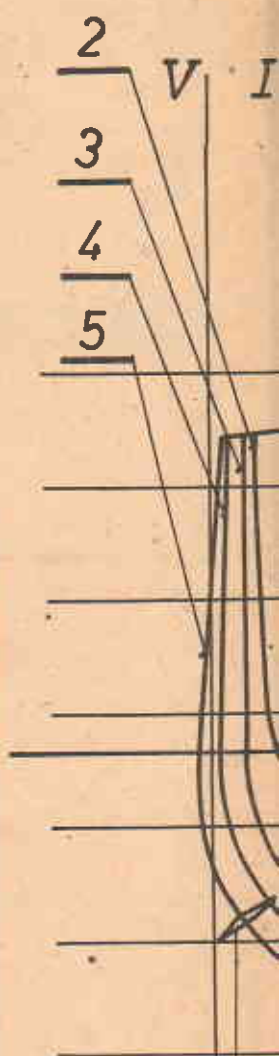
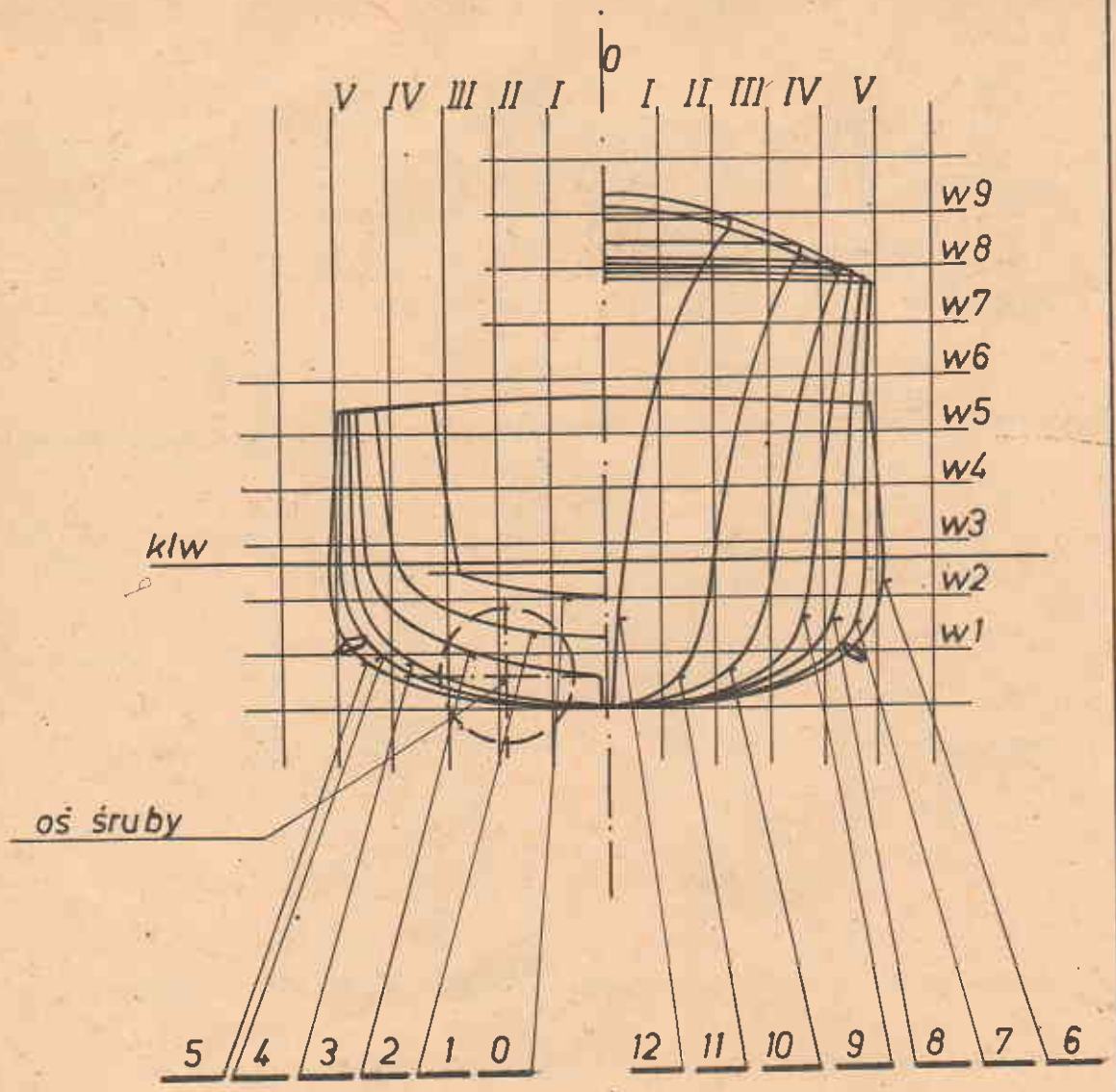
przekrój przez wręgę „6 A”



PODZIAŁKA LINIOWA
dla skali 1:150



Przekroje i widoki kształtu
oraz iluminatora i włązu aw



stępka
przechyłowa
oś śruby



nadburcia
waryjnego

szyba

Podziałka
dla skali 1

D. liniowa
1 : 75



MM
Łódź

Data: 1983 r.
Podziałka: 1:150, 1:75

Miostaw MARRA.
Opracował i kreślił:

Nr. arkusza: 2
Ilość ark.: 6

POLSKI NISZCZYCIEL - II wojna światowa
ORP "ORKAN"

