



# DAMEN PLATFORM SUPPLY VESSEL 4500

STERNA

## GENERAL

Yard number	552016
Delivery date	March 2012
Basic functions	Offshore supply and general assistance operations for drilling rigs and production platforms
Classification	Lloyd's Register * 100A1, Offshore Supply Ship, * IWS, EP, * LMC, UMS, DP(AA)
Flag	Brazilian
Owner	Wilson Sons, Brazil
Contractor	Petrobras, Brazil

## DIMENSIONS

Length o.a.	87.57 m
Length b.p.p.	81.72 m
Beam mld.	16.00 m
Depth mld.	7.80 m
Draught summer	6.19 m
Deadweight (summer)	4500 t
Deck area	840 m <sup>2</sup>
Deck load (at 1. m above deck)	1900 t

## TANK CAPACITIES

Ballast / drill water	1550 m <sup>3</sup>
Fuel oil (service)	250 m <sup>3</sup>
Potable water (service)	150 m <sup>3</sup>
Fuel oil (liquid mud)	1420 m <sup>3</sup> (820 m <sup>3</sup> )
Fresh water (brine)	1400 m <sup>3</sup> (800 m <sup>3</sup> )
Multi-purpose	300 m <sup>3</sup>

## PERFORMANCES (APPROX.)

Speed (at 5.00 m draught)	13.0 kn
---------------------------	---------

## PROPULSION SYSTEM

Main engines	Diesel-Electric, 690 V, 60 Hz
Propulsion power	2x 2500 ekW at 1200 rpm
Propellers	2x 2800 mm, FP, Azimuth in nozzle
Bow thrusters	2x 745 ekW, 1750 mm, CP

## AUXILIARY EQUIPMENT

Networks	690V / 440V / 230V, 60Hz
Main generator sets	4x CAT 3512C, each 1570 ekW at 1800 rpm
Emerg. / harbour generator set	1x CAT C9, 238 ekW at 1800 rpm

## DECK LAY-OUT

Anchor mooring winch	2x electric-hydraulic, each with warping head
Capstans	2x electric, each 6 t pull
Deck crane	1x electric, 3 t at 16 m (harbour)
Tugger winches	2x electric, each 10 t pull

## CARGO HANDLING SYSTEM

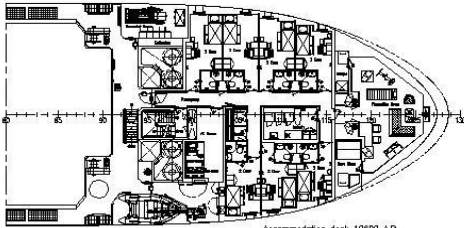
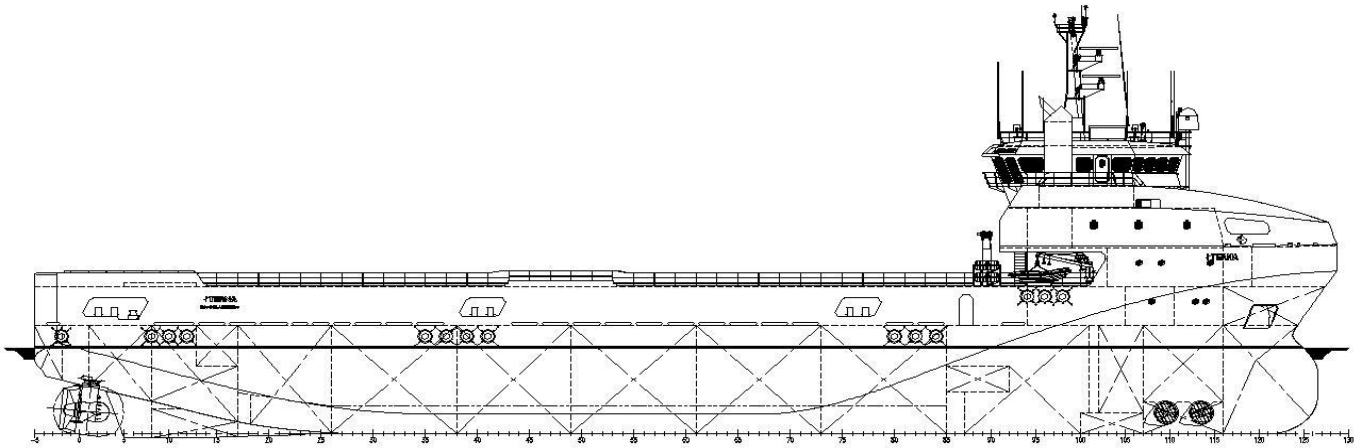
Technical fresh water / brine	2x 90 m <sup>3</sup> /hr at 11.2 bar (system I)
Fuel oil / liquid mud pump	2x 90 m <sup>3</sup> /hr at 13.6 bar (system II)
Technical fresh water	2x 90 m <sup>3</sup> /hr at 8 bar (system III)
Fuel oil	2x 90 m <sup>3</sup> /hr at 7 bar (system IV)
Multi-purpose	3x 90 m <sup>3</sup> /hr at 8.2 bar (system V)
Dry bulk compressor	2x 27.6 m <sup>3</sup> /min at 7 bar

## ACCOMMODATION

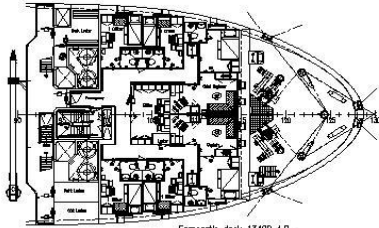
Crew	20 persons
------	------------

## NAUTICAL AND COMMUNICATION EQUIPMENT

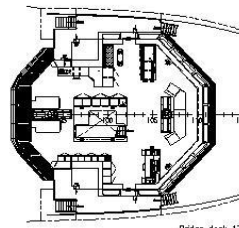
Radar systems	2x X-band
DP - system	DP-2
GMDSS	Area A3



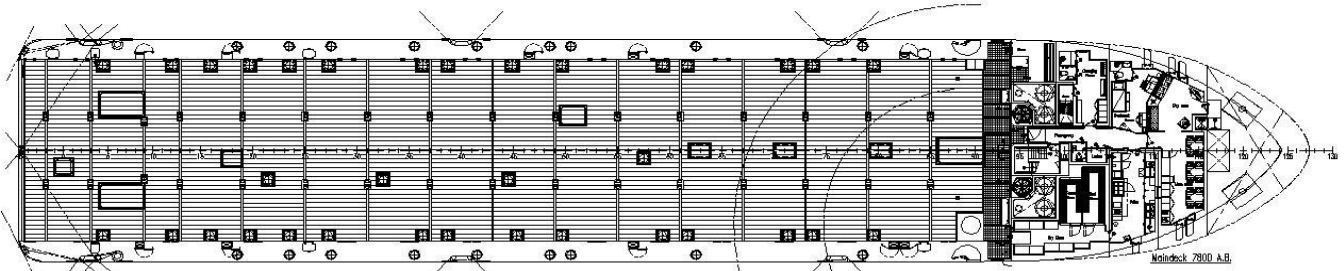
Accommodation deck 10800 A.B.



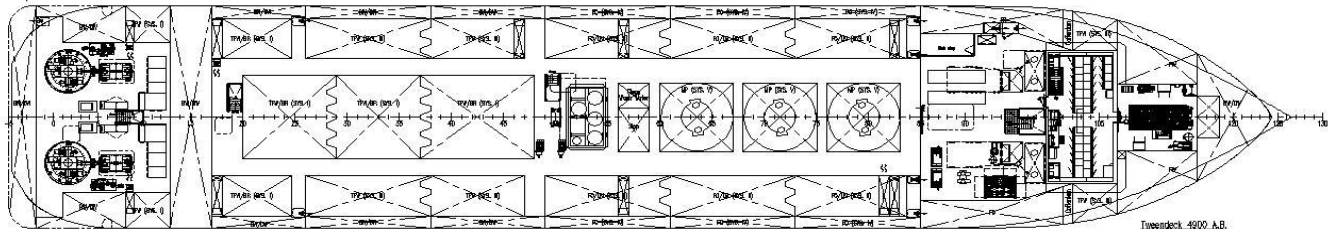
Forecastle deck 13400 A.B.



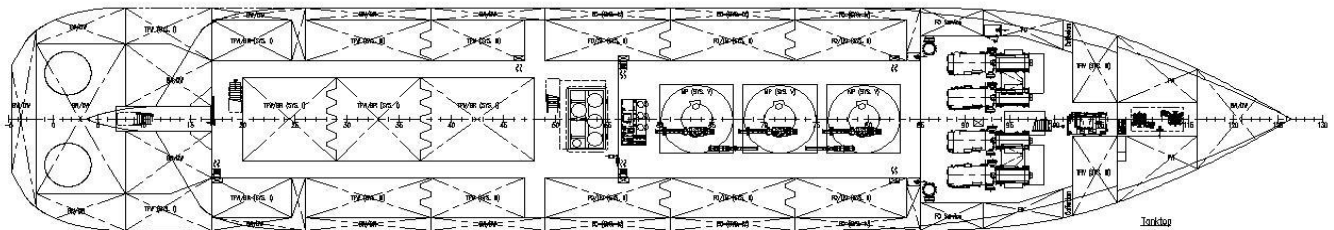
Bridge deck 17900 A.B.



Maindeck 2800 A.B.



Tweendeck 4900 A.B.



Isotkoper

# DAMEN PLATFORM SUPPLY VESSEL 4500

## STERNA

# DAMEN

DAMEN SHIPYARDS GORINCHEM

Member of the DAMEN SHIPYARDS GROUP 

Industrieterrein Avelingen West 20  
4202 MS Gorinchem

P.O. Box 1  
4200 AA Gorinchem  
The Netherlands

phone +31 (0)183 63 99 11  
fax +31 (0)183 63 21 89

info@damen.nl  
www.damen.nl

DSGo-P0.0-mmyy

Registered at the Chamber of Commerce, no. 23036357, under the name BV Scheepswerf Damen Gorinchem.  
All our offers are without engagement unless stated otherwise.  
All activities carried out in accordance with the VNSI General Yard Conditions (Netherlands Shipbuilding Industry Association).