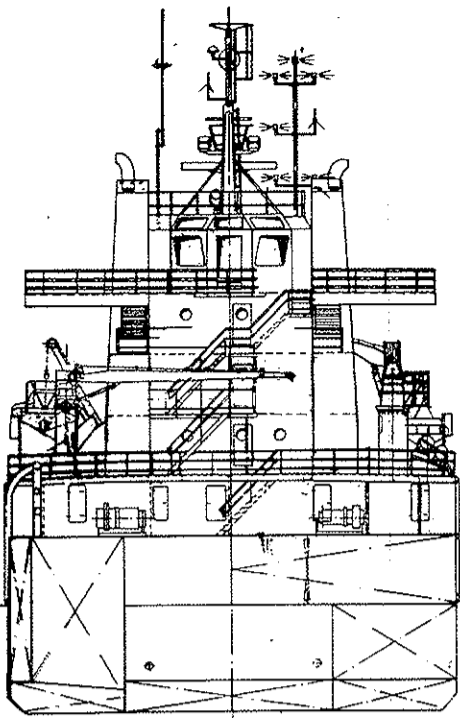
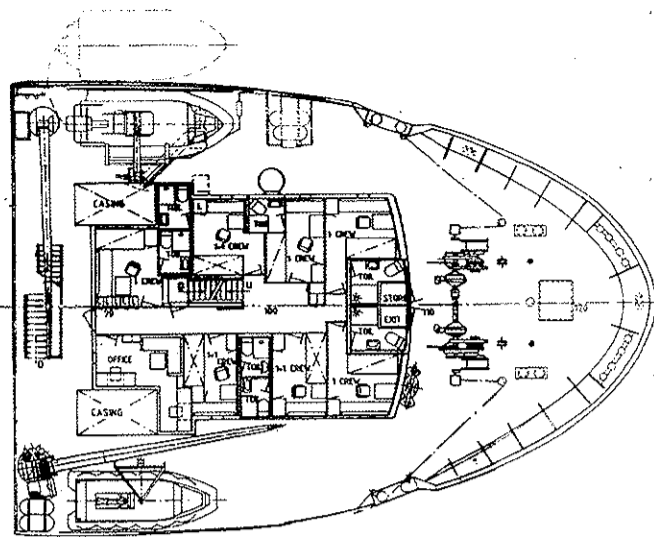


PRINCIPAL DIMENSIONS

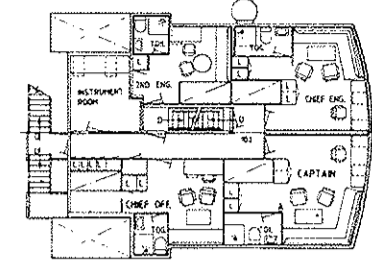
LENGTH O.A.	Approx.	81.90 m
LENGTH B.P.		74.20 m
BREADTH mid.		18.00 m
DEPTH sh. deck		7.10 m
DEPTH main deck		4.35 m
DRAFT		4.97 m
DEADWEIGHT	Approx.	3100 TONNES
MAIN ENGINES		2 x 3300 BHP.



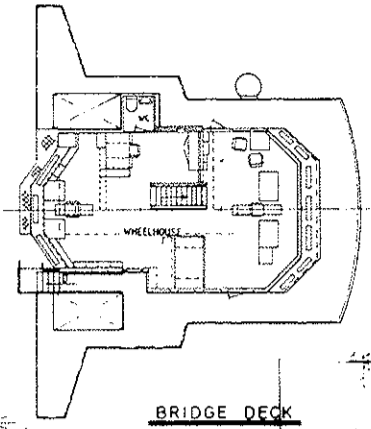
STERN ELEVATION



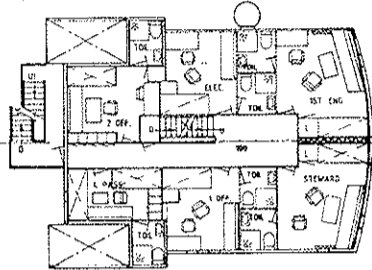
FORECASTLE DECK



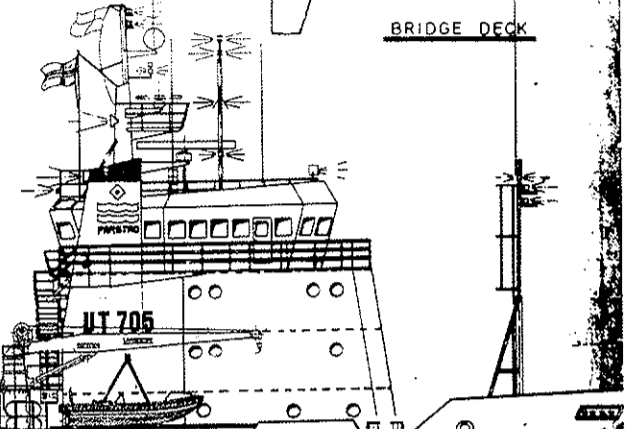
CAPTAIN DECK



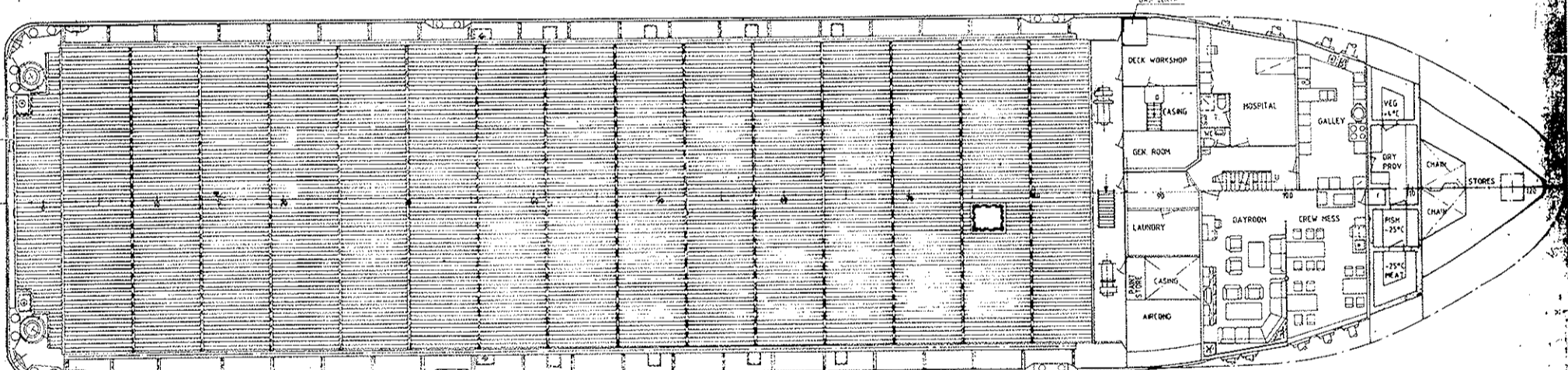
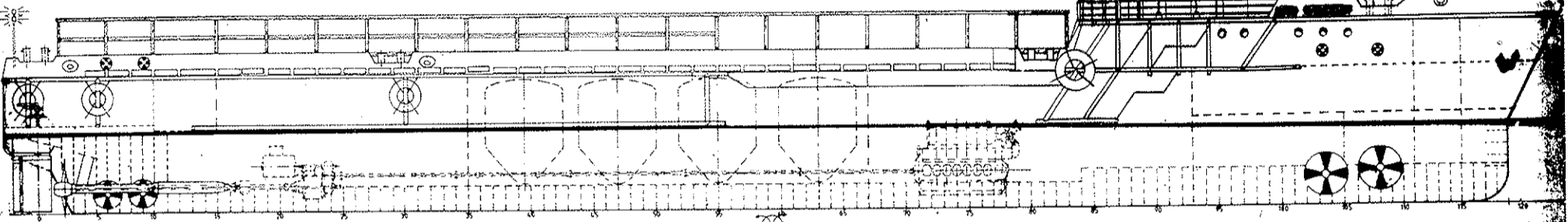
BRIDGE DECK



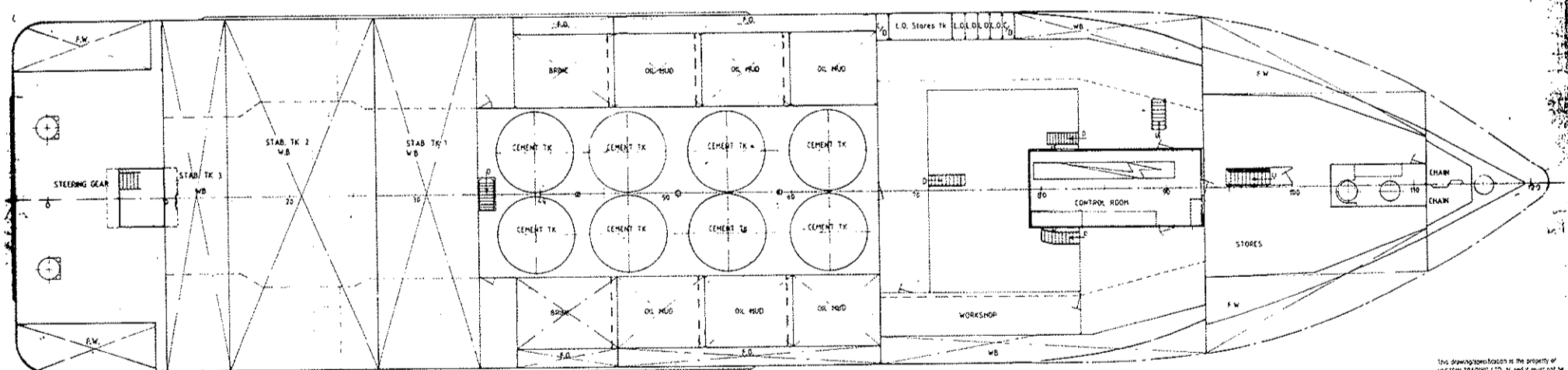
OFFICERS DECK



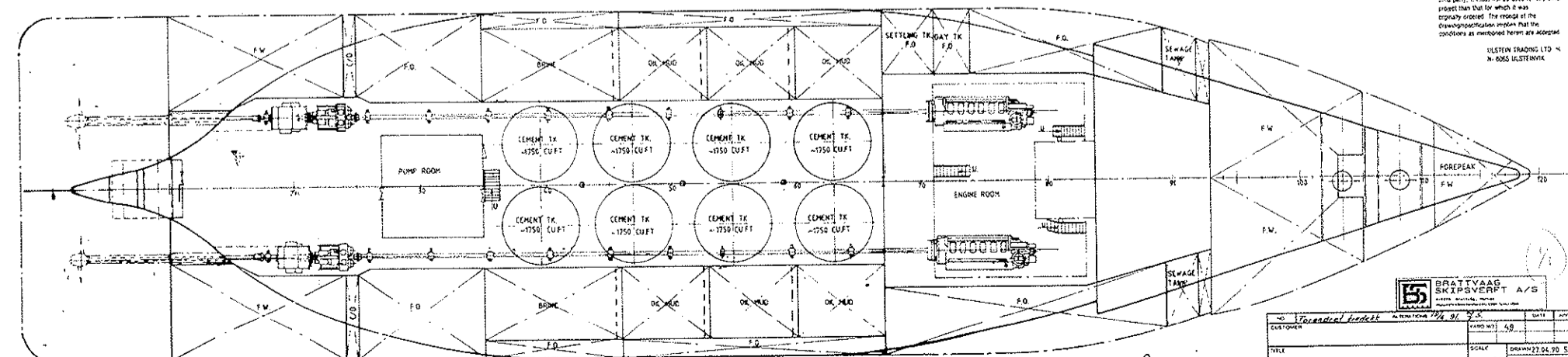
UT 705



SHELTER DECK



MAIN DECK



TANK TOP

FS PISLES

This drawing is the property of ULSTEIN TRADING LTD. and it must not be copied or the contents thereof or any information contained therein must not be imparted to any unauthorized third party. It must not be used for any other project than that for which it was originally ordered. The recipient of the drawing is responsible for the conditions as mentioned herein are accepted.

ULSTEIN TRADING LTD.
N. ØRSKOV ULSTEIN

BRATVAAG SKIPIERVERKT A/S		DATE	
ULSTEIN TRADING LTD. A/S		DATE	
PROJECT NO. 731/90		SCALE 1:100	
DRAWING NO. 22.04.20.5.B		CHECKED	
PROJECT NO. 731/90		APPROVED	
DRAWING NO. 0-1012		DATE 2-0-1990	