

POSH SANDPIPER


3,250 DWT/ Platform Supply Vessel (PSV)/ DP 2
Call sign: 9V9739
Class Notation DNV +1A1, SF, E0, DK(+), HL(3.0), DynposAUTR, Clean design, LFL*, BIS, COMF V(3),NAUT OSV(A), Fire Fighter 1, OILREC

Principal Particulars

Flag	Singapore
Year Built	2013
Place Built	PaxOcean Engineering, Zhuhai, China
Design Draft	5.10 m
Max Draft	5.90 m
Gross Tonnage	2,644.0 T
Net Tonnage	985.0 T
Deadweight (Max Draft)	3,250 T @ 5.90 m draft
Displacement	5,350.0 T
IMO No.	9618082
Design	Rolls-Royce UT 755 CD

Dimensions

Length Overall	78.70 m
Beam Overall	16.00 m
Depth Moulded	7.00 m

Performance

Max Speed	12.00 kts
Economical Speed	10.00 kts

* Subject to actual weather and operating conditions
Cargo Deck

Deck Cargo Area	670.0 m ²
Deck Cargo Dimension	50.7 m x 13.2 m
Deck Cargo Capacity	1,450.0 T
Deck Strength	5.0 T/m ²
Reefer Points	5 x 440V

Capacities

Fuel Tank	887.0 m ³
Fresh Water	697.0 m ³
Drill Water *	1,326.60 m ³ (shared with ballast water)
Ballast Water *	1,538.40 m ³ (shared with drill water)
Mud Tank *	820.40 m ³ (shared with brine)
Brine Tank *	820.40 m ³ (shared with mud)
Dry Bulk Tank	251.60 m ³ (in 5 tanks)
Methanol Tank	135.30 m ³
Base Oil Tank	328.40 m ³

* Indicates tanks with shared capacity
Discharging Rates

Drill Water/Pump	1 x 172 m ³ /hr@9.5 bar
Fresh Water/Pump	1 x 150 m ³ /hr@9 bar
Fuel/Pump	1 x 150 m ³ /hr@9 bar
Brine/Pump	1 x 75 m ³ /hr@18bar
Liquid mud/Pump	2 x 100 m ³ /hr@18bar
Dry Bulk Tank	2 x 1368 m ³ /hr@6 bar

Accommodation

1 – Berth Cabins	8
2 – Berth Cabins	9
Total (POB)	26

Machinery & Equipment

Main Generator	Caterpillar C32, 4 x 994 kW
Emergency Generator	Lidenberg, 1 x 99 kW

Thruster & Propulsion

Azimuth Thruster/Propellers	Rolls-Royce US205CP, 2 x 1470 kW
Bow Thruster	Rolls-Royce TT1850, 2 x 700 kW

Deck Crane

Fixed Crane	SWL 5.0 T @ 16.0m radius
-------------	--------------------------

Mooring Equipment

Anchors	2 x SPEK Type Anchor; 2,850 kg each
Anchor Windlass	Rolls-Royce 2 x 8.0 T each @ 0-12 m/min
Tugger Winch	Rolls-Royce 2 x 10.0 T each @ 0-19 m/min
Capstans	Rolls-Royce 2 x 8.0 T each @ 0-16 m/min

Dynamic Positioning System

DP Class	DP 2 Dynpos AUTR, Rolls-Royce, Poscon joystick system
References	2 x DGPS + 1 Cyscan
MRU	3

Fire Fighting and Rescue

Firefighting System	FiFi 1
FiFi Pump	2 x 1,600 m ³ /hr
FiFi Monitors	2 x 1,200 m ³ /hr
Spray Booms	2 x 6.0 m/Fixed Nozzle
Dispersant Capacity	NIL
Foam Capacity	2.5m ³
Rescue Boat	1 x 15 man rigid hull waterjet FRC, 160 hp, ≥8 kts
Life Rafts	6 x 25 man
Life Buoys	8
Life Jackets	26

CARGO CAPACITY PLAN

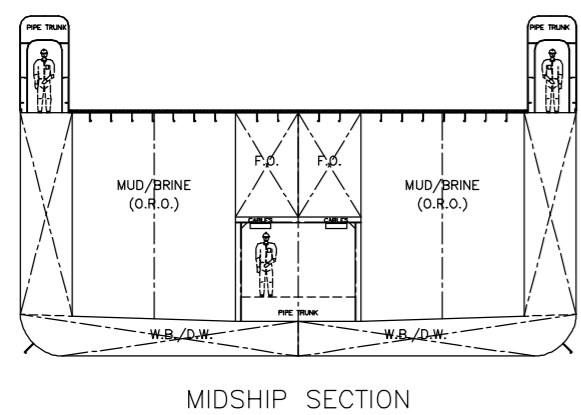
Tank No.	Volume m ³	Fuel m ³ SG 0.900	Fresh Water m ³ SG 1.000	Ballast Water m ³ SG 1.025	Mud m ³ SG 3.000	Brine m ³ SG 2.800	ORO m ³ SG 1.000	Drill Water m ³ SG 1.000	Dry Bulk m ³ SG 2.160	Methanol m ³ SG 0.791	Base Oil m ³ SG 0.830
*1	33			33				33			
2	72.3		72.3								
3	72.3		72.3								
*4	74.4			74.4				74.4			
*5	95.8			95.8				95.8			
*7A	60			60				60			
*7B	59			59				59			
*8	85.7			85.7				85.7			
*9	85.7			85.7				85.7			
*10	79.2			79.2				79.2			
*11	79.2			79.2				79.2			
12	54.6		54.6								
13	54.9		54.9								
14	51		51								
15	51.3		51.3								
*16	77.5			77.5				77.5			
*17	77.5			77.5				77.5			
18	26.3		26.3								
*19	62.5		62.5								
*20	170.4		170.4	170.4				170.4			
*22	64.1	64.1								64.1	
*23	71.2	71.2								71.2	
24	211.8			211.8							
25	81.4		81.4								
30	19.6	19.6									
31	19.6	19.6									
33	15.7	15.7									
34	82.1	82.1									
35	82.1	82.1									
36	82.1	82.1									82.1
37	82.1	82.1									82.1
*38	82.1	82.1									82.1
*39	82.1	82.1									82.1
*50	102.1	102.1			102.1	102.1					
*51	102.1	102.1			102.1	102.1					
*52	102.7				102.7	102.7	102.7				
*53	102.7				102.7	102.7	102.7				
*54	102.7				102.7	102.7	102.7				
*55	102.7				102.7	102.7	102.7				
*56	102.7				102.7	102.7	102.7				
*57	102.7				102.7	102.7	102.7				
60	50.3								50.3		
61	50.3								50.3		
62	50.3								50.3		
63	50.3								50.3		
64	50.3								50.3		
*66	90.3			90.3				90.3			
*67	90.3			90.3				90.3			
*68	84.3			84.3				84.3			
*69	84.3			84.3				84.3			
SUM		887	697	1538.4	820.4	820.4	616.2	1326.6	251.5	135.3	328.4



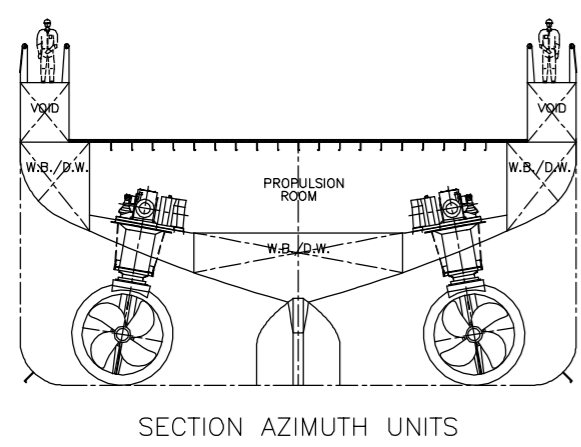
Rolls-Royce

UT-Design™

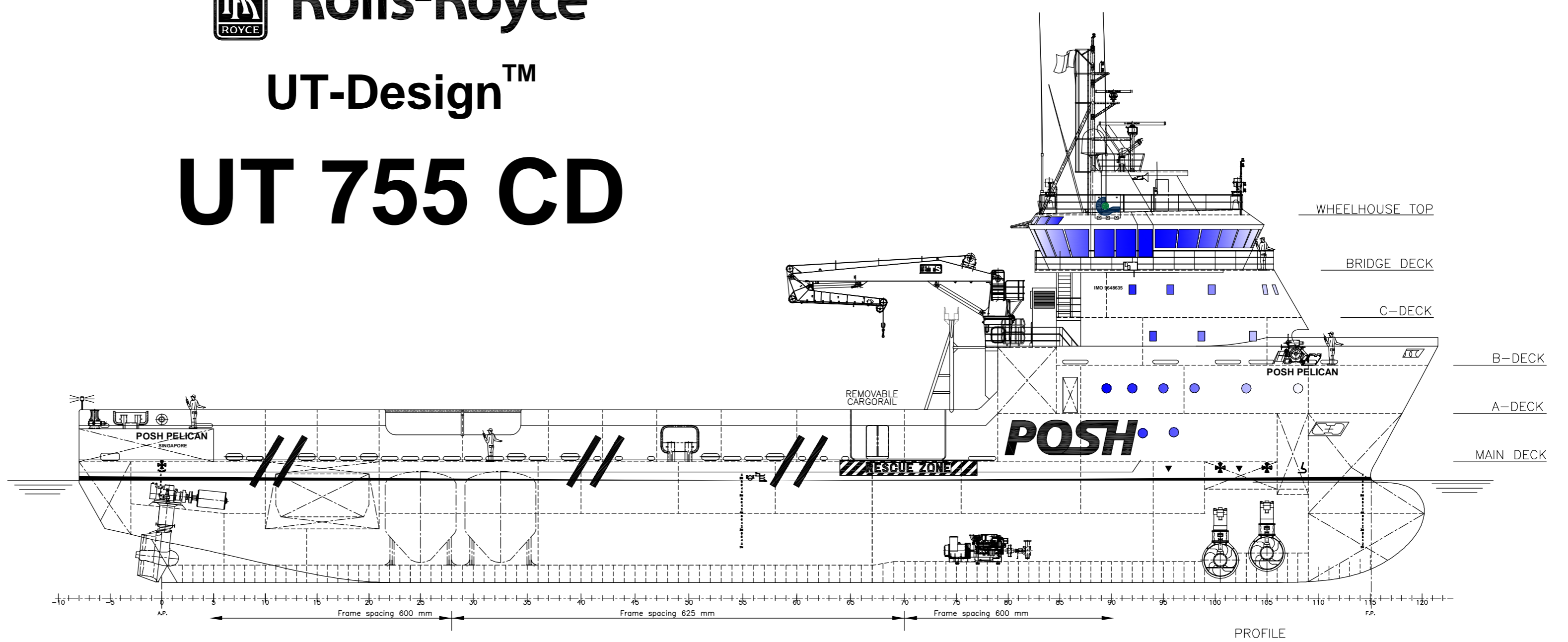
UT 755 CD



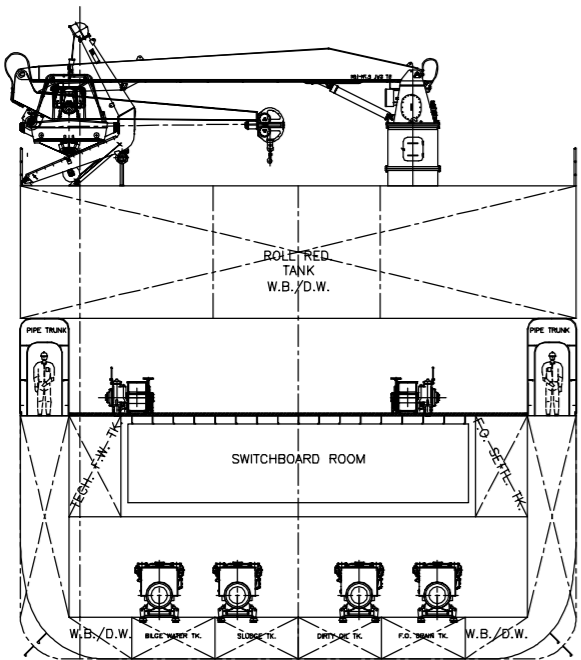
MIDSHIP SECTION



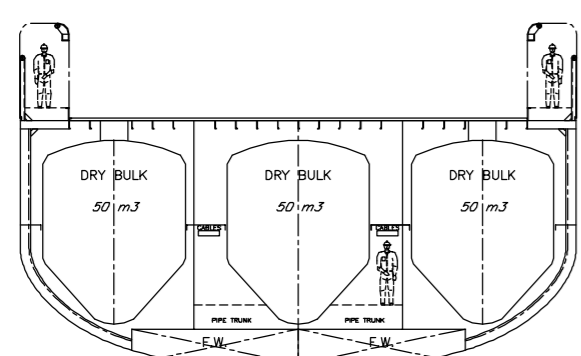
SECTION AZIMUTH UNITS



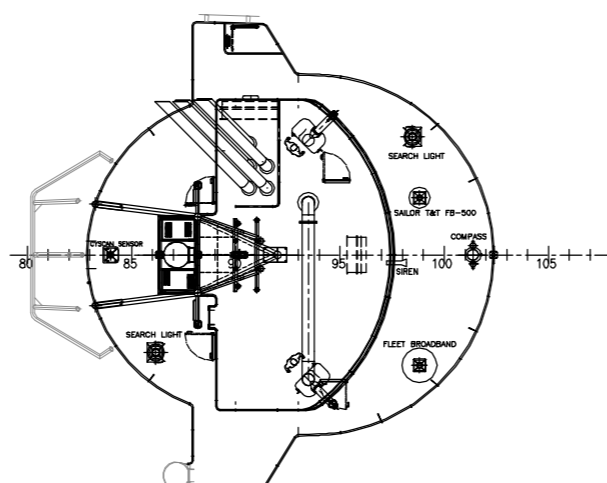
PROFILE



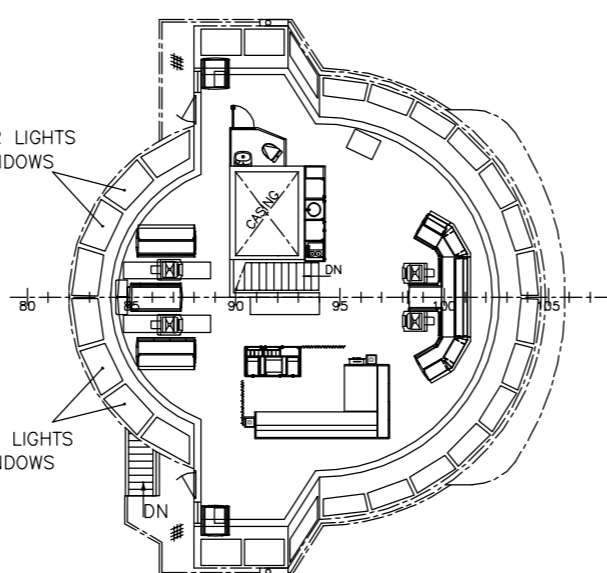
SECTION FRAME #73
LOOKING FORWARD



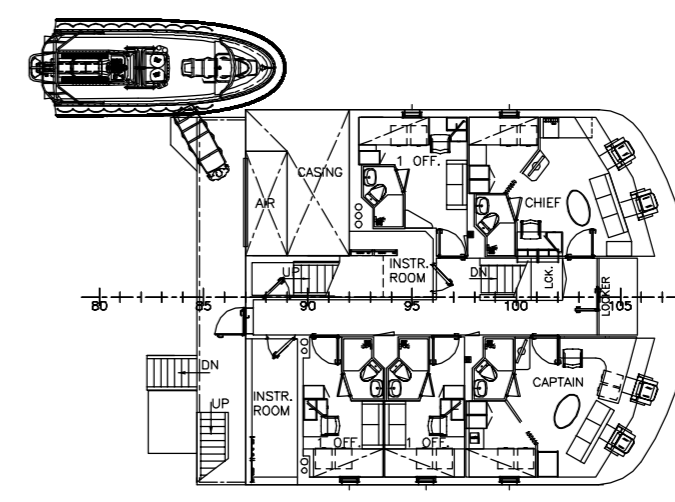
SECTION FRAME #25



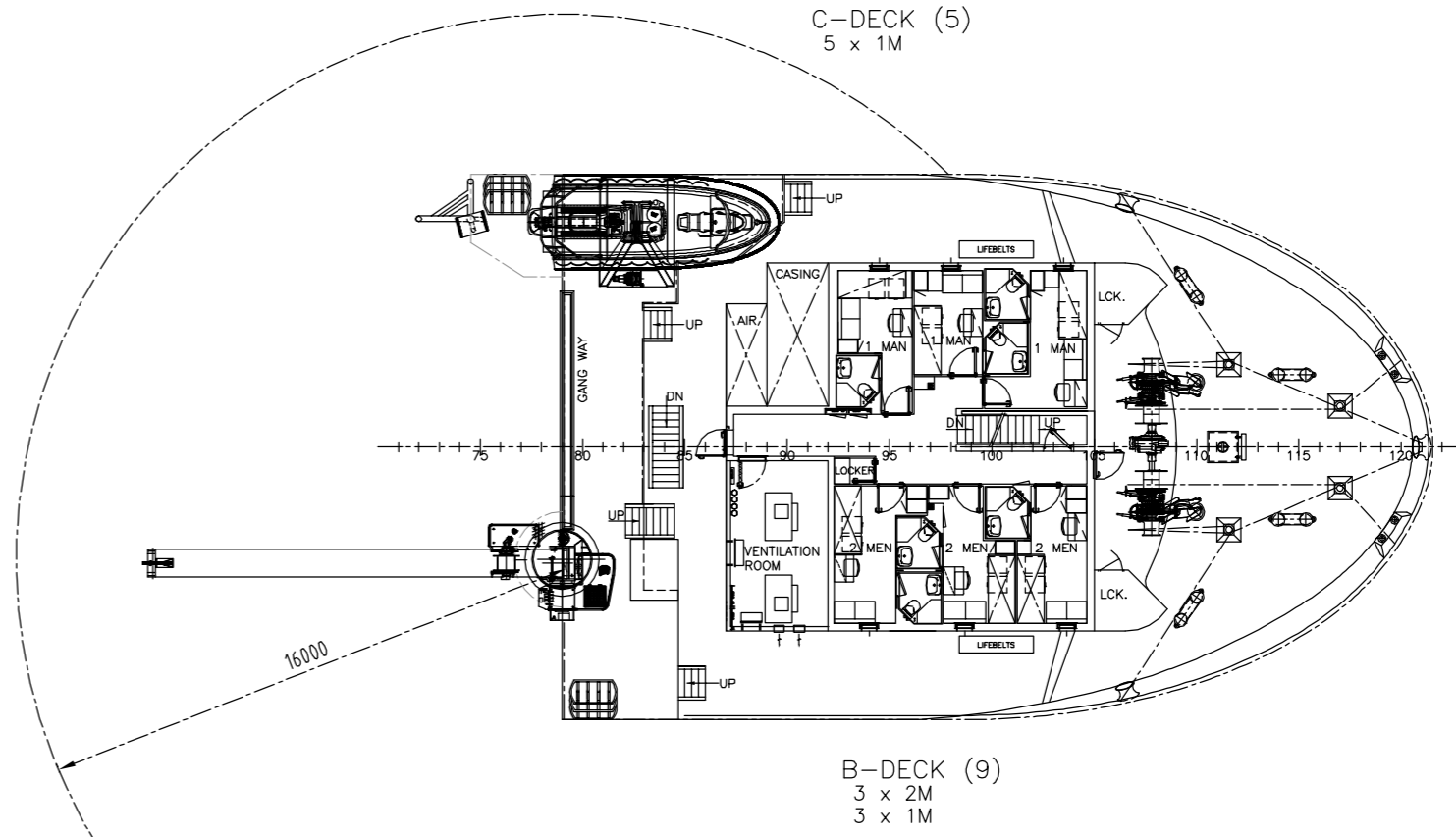
WHEELHOUSE TOP



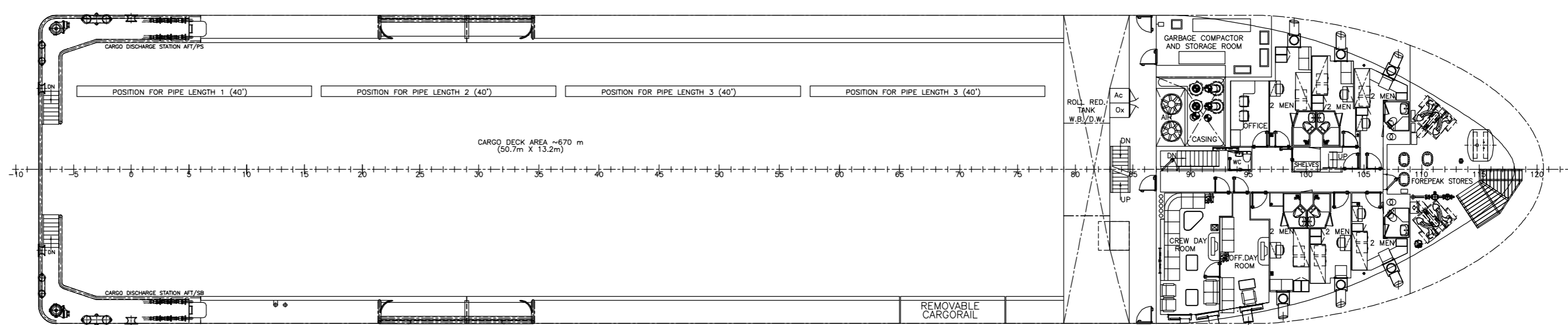
BRIDGE DECK



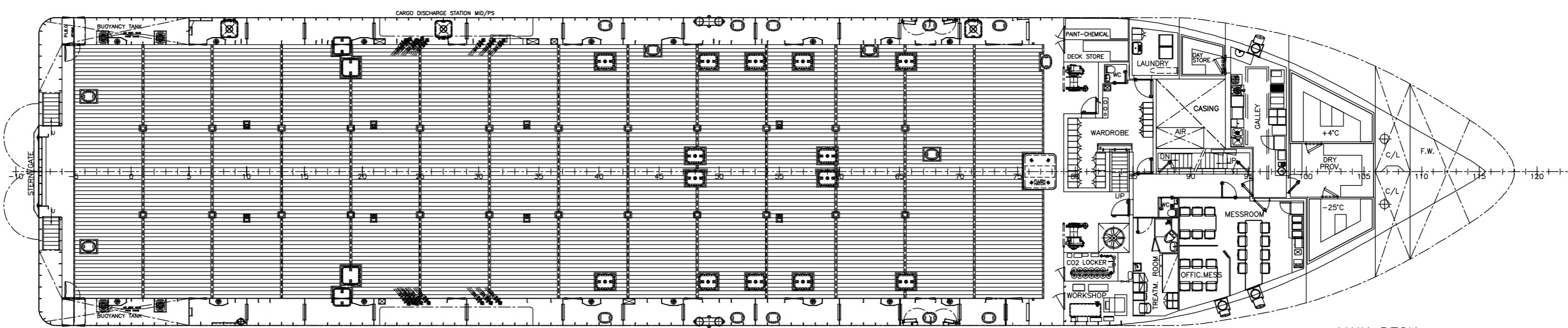
C-DECK (5)
5 x 1M



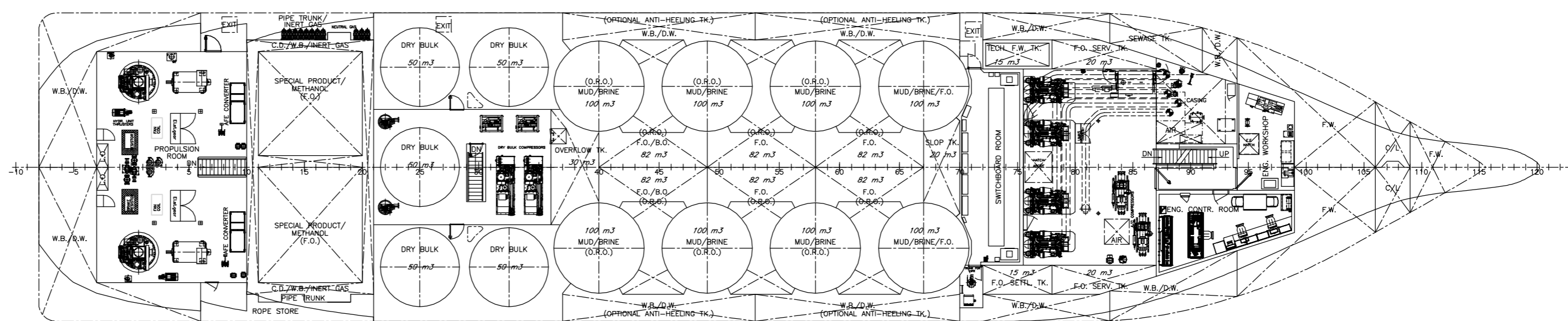
B-DECK (9)
3 x 2M
3 x 1M



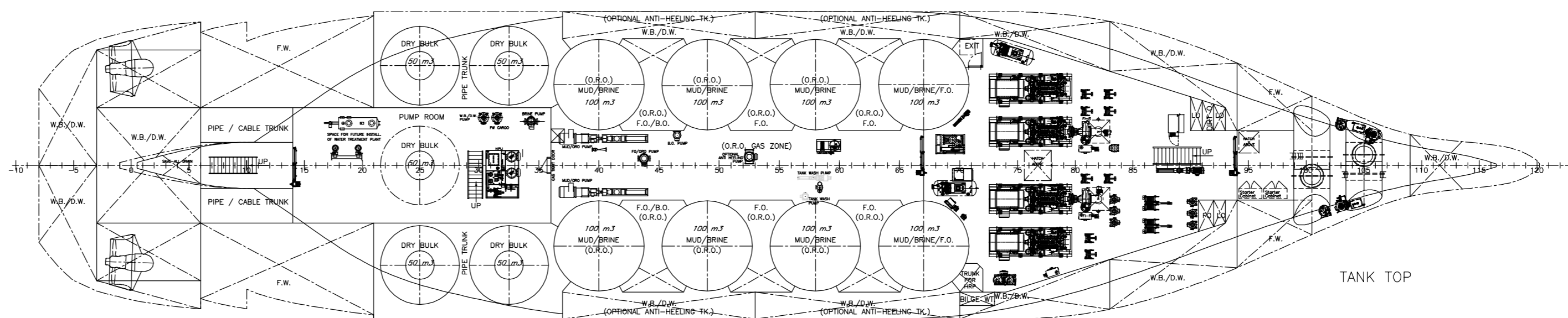
A-DECK (12)
6 x 2M



MAIN DECK



TWEEN DECK



TANK TOP

MAIN PARTICULARS

L.O.A.....	APPROX. 78.70 m
L.P.P.....	70.10 m
BREADTH MLD.....	16.00 m
DEPTH MAIN DK.....	7.00 m
DESIGN DRAFT.....	5.10 m
MAX DRAFT.....	APPROX. 5.80 m

Class notation:
Det Norske Veritas +1A1, SF, EO, DK(+), HL(3.0), DYNPOS AUTR, CLEAN DESIGN,
LFL*, BIS, COMP V(3), NAUT OSV(A), FIRE FIGHTER I, OILREC

0	25.11.13	FIRST ISSUE	JPOW				
Rev.	Date	Reason for Issue	Made by	Chk'd by	Disc. by	Client Recd.	
CUSTOMER PaxOcean Engineering			TITLE GENERAL ARRANGEMENT				
Yard no.	PX1019						
Rolls-Royce		UT-Design™					
Scale	1:150	Form	A1	Project No.	107194 + 101 - 001	Rev.	0