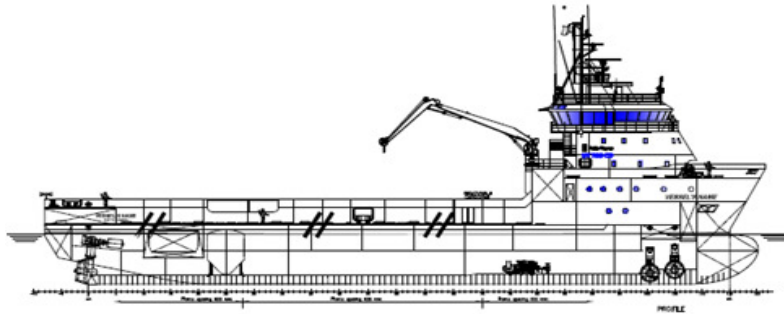


POSH PUFFIN


3,200 DWT/ 81m / DP 2 / Diesel Electric / PSV **Call sign: 9V3238**
Class Notation ABS + A1, Offshore Support Vessel, (E), AMS, ACCU, DPS-2, ENVIRO, HAB(WB), UWILD, Fire Fighting Vessel Class 1

Principal Particulars

Flag	Singapore
Year Built	2014
Place Built	DryDock World-Nanindah Shipyard, Indonesia
Design Draft	5.10 m
Max Draft	5.85 m
Gross Tonnage	2,795.0 T
Net Tonnage	1,066.0 T
Deadweight (Max Draft)	3,258.8 T @ 5.85 m draft
Displacement	6,761.0 T
IMO No.	9605592
Design	Rolls-Royce UT 755 CDL

Dimensions

Length Overall	81.29 m
Beam Overall	16.00 m
Depth Moulded	7.00 m

Performance

Max Speed	12.00 kts
Economical Speed	10.00 kts

* Subject to actual weather and operating conditions
Cargo Deck

Deck Cargo Area	663.0 m ²
Deck Cargo Dimension	51.0 m x 13.0 m
Deck Cargo Capacity	1,000 T
Deck Strength	5.0 T/m ²
Reefer Points	4 (2 x 440v , 2 x 220v)

Total Capacities

Fuel Tank	1,146.8 m ³
Fresh Water	773.4 m ³
Drill Water *	2,542.7 m ³
Ballast Water *	1,465.5 m ³
Mud Tank *	927.8 m ³
Brine Tank *	927.8 m ³
Dry Bulk Tank	317.7 m ³ (in 6 tanks)

* Indicates tanks with shared capacity
Discharging Rates

Drill Water/Pump	1 x 200 m ³ /hr@90 m head
Fresh Water/Pump	1 x 200 m ³ /hr@90 m head
Fuel/Pump	1 x 200 m ³ /hr@100 m head
Brine/Pump	1 x 75 m ³ /hr@60 m head
Liquid mud/Pump	1 x 75 m ³ /hr@60 m head
Dry Bulk Tank	1 x 75 m ³ /hr@60 m head

Accommodation

1 – Berth Cabins	6
2 – Berth Cabins	6
4 – Berth Cabins	8
Total (POB)	50

Machinery & Equipment

Diesel Generators	Cummins 4 x 1,750 BHP, 440V/60Hz each
Emergency Generator	Volvo 1 x 400 kW, 440V/60Hz

Thruster & Propulsion

Azimuth Thruster/Propellers	Rolls-Royce 2 x 2,258 BHP (1,685 kW)
Bow Thruster	Rolls-Royce 2 x 590 kW, 440V/60Hz each

Deck Crane

Fixed Crane	SWL 3.0 T @ 16.0 m radius
-------------	---------------------------

Mooring Equipment

Anchors	2 x SPEK Type Anchor; 2,850 kg each
Anchor Windlass	1 x 13.0 T each @ 0-12 m/min
Tugger Winch	2 x 10.0 T each @ 12 m/min
Capstans	2 x 8.0T each @ 0-16 m/min

Dynamic Positioning System

DP Class	DP 2 Dynamic Positioning system type Rolls-Royce
References	2 x DGPS + 1 x Fan Beam

Fire Fighting and Rescue

Firefighting System	Fifi 1
Fifi Pump	2 x 1,900 m ³ /hr
Fifi Monitors	1 x 1200 m ³ /hr
Spray Booms	2 x 6.0 m/Fixed Nozzle
Dispersant Capacity	NIL
Foam Capacity	NIL
Rescue Boat	1 x 15 man/rigid/124 hp
Life rafts	6 x 25 man
Life Buoys	8
Life Jackets	34

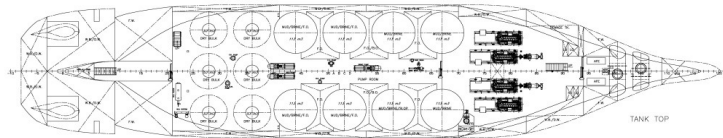
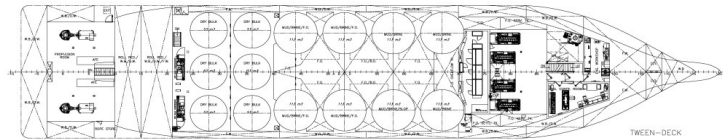
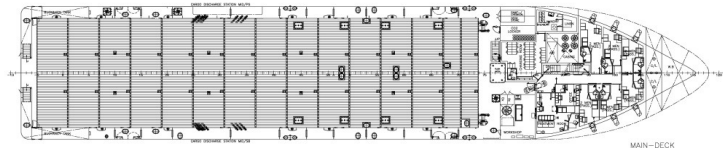
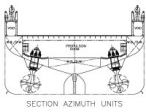
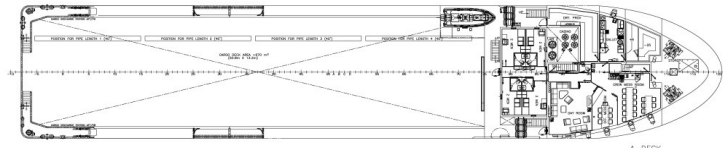
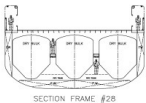
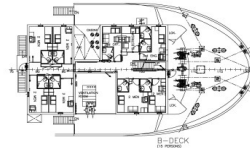
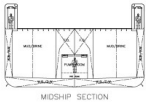
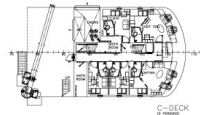
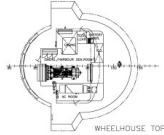
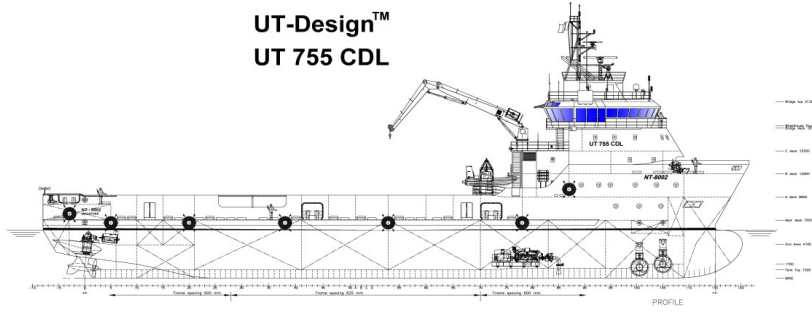
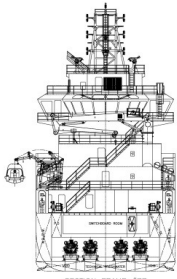
CARGO CAPACITY PLAN

Tank No.	Volume m ³	Fuel m ³ SG 0.900	Fresh Water m ³ SG 1.000	Ballast Water m ³ SG 1.025	Mud m ³ SG 2.800	Brine m ³ SG 2.800	Drill Water m ³ SG 1.000	Dry Bulk m ³ SG 2.160	Base Oil m ³ SG 0.830
1	109.8			112.5					
2	70.6		70.6						
3	70.6		70.6						
4	53.6			55.0			53.6		
5	80.5			82.5			80.5		
7A	60.8			62.3			60.8		
7B	54.3			55.7			54.3		
8	80.2			82.2			80.2		
9	80.2			82.2			80.2		
10	80.1			82.1			80.1		
11	82.1			82.1			80.1		
12	72.5		72.5						
12A	46.7		46.7						
13	72.9		72.9						
13A	50.8		50.8						
16	77.1			79.0					
17	77.1			79.0					
22	169.3		169.3	173.6			169.3		
23	140.2			143.7			140.2		
30	19.6	17.6							
31	19.6	17.6							
32	19.7	17.7							
33	13.7	12.3							
34	85.3	76.7							
35	85.3	76.7							
36	91.4	82.2							75.9
37	91.4	82.2							75.9
38	110.5	99.5							
39	110.5	99.5							
48	110.0		110.0						
49	110.0		110.0						
50	116.0				324.7	324.7			
51	116.0				324.7	324.7			
52	116.0				324.7	324.7			
53	116.0				324.7	324.7			
54	116.0	104.4			324.7	324.7			
55	116.0	104.4			324.7	324.7			
56	116.0	104.4			324.7	324.7			
57	116.0	104.4			324.7	324.7			
59	34.1	30.7							
60	54.7			56.1			54.7		
61	54.7			56.1			54.7		
66	54.5			55.9			54.5		
67	54.5			55.9			54.5		
68	51.8			53.1			51.8		
69	51.8			53.1			51.8		
72	1.9	1.7							
80	52.9							114.4	
81	52.9							114.4	
82	52.9							114.4	
83	52.9							114.4	
84	52.9							114.4	
85	52.9							114.4	
TOTAL WEIGHTS		1032.2	773.4	1502.1	2597.9	2597.9	1201.5	686.2	151.7
TOTAL VOLUMES		1146.8	773.4	1465.5	927.8	927.8	1201.5	317.7	182.8

Particulars given herein are believed to be correct but not guaranteed. Owner reserves the rights to amend specifications without notification.

Rolls-Royce

**UT-Design™
UT 755 CDL**



MAIN PARTICULARS
 L.O.A. APPROX 81.29 m
 L.P.P. 77.60 m
 BREADTH M.L.D. 16.00 m
 DEPTH MAIN DECK 7.00 m
 DESIGN DRAFT 5.10 m
 MAX DRAFT APPROX 5.85 m

NO.	DESCRIPTION	UNIT	VALUE
1	LENGTH OVER ALL	M	81.29
2	LENGTH BETWEEN PERPENDICULARS	M	77.60
3	BREADTH AT MAIN DECK LEVEL	M	16.00
4	DEPTH MAIN DECK	M	7.00
5	DESIGN DRAFT	M	5.10
6	MAX DRAFT	M	5.85
7	DISPLACEMENT	T	1200
8	NET TONNAGE	T	100
9	GROSS TONNAGE	T	150
10	REGISTERED TONNAGE	T	120
11	WEIGHT	T	1000
12	WEIGHT OF HULL	T	500
13	WEIGHT OF MACHINERY	T	200
14	WEIGHT OF EQUIPMENT	T	100
15	WEIGHT OF STORES	T	50
16	WEIGHT OF PASSENGERS	T	10
17	WEIGHT OF CREW	T	10
18	WEIGHT OF FUEL	T	100
19	WEIGHT OF WATER	T	100
20	WEIGHT OF AIR	T	100
21	WEIGHT OF SOLIDS	T	100
22	WEIGHT OF LIQUIDS	T	100
23	WEIGHT OF GASES	T	100
24	WEIGHT OF OTHERS	T	100
25	WEIGHT OF TOTAL	T	1000

Rolls-Royce
 DDP-IndOcean
 GENERAL ARRANGEMENT
 UT-Design