

ST-126

Skipsteknisk 

80 m Pelagic Trawler for Research Fishing Company Ltd., Shetland

> Research



ST-design [®]
- freedom to create

www.skipsteknisk.no

ST-126

80 m Pelagic Trawler for Research Fishing Company Ltd., Shetland
Research

GENERAL

Type of vessel	Pelagic Trawler
Name of vessel	"Research"
Owner	Research Fishing Company, Shetland
Design	Skipsteknisk AS, Norway
Shipyard	Vard Langsten b.no.882
Delivered	September 2018

MAIN CHARACTERISTICS

Length over all	79.80 m
Length between p.p.	72.60 m
Breadth moulded	16.20 m
Depth main deck	6.60 m
Depth sh. deck	9.40 m

TANK CAPACITIES

Fuel oil approx	550 m ³
Fresh water	77 m ³
Ballast water	490 m ³
RSW capacity	2800 m ³

ANTIROLLING TANK

Two passive anti-rolling tanks.

CLASS

DNV GL +1A1-Ice C, TMON, E0 "Fishing Vessel"

SPEED

Speed approx. 18.0 knots in ballast condition

ACCOMODATION

Arranged for 15 persons in single cabins with separate bathrooms.
Hospital

PROPULSION SYSTEM - HYBRID SOLUTION

- 1 main engine of 7320 kW at 750 rpm
- 1 main CPP propeller Ø4300
- Max power on propeller 7320 kW
- 1 main reduction gear with PTO of 3400 kW

AUXILIARY DIESEL ENGINES

- 1 x 1480 kW
- 1 x 1110 kW
- 1 x harbour gen. 323 kW
- 1 x emergency gen. 115 kW

SHAFT ALTERNATOR

- 1 Shaft alternator of 3400 kW (floating frequency)

THRUSTER

- 1 Azimuth/tunnel bow thruster of 1500 kW
- 1 aft tunnel thruster of 960 kW

RUDDER

- 1 Flap rudder
- 1 electric hydraulic steering gear

NAVIGATION AND RADIO COMMUNICATION

- 2 radars/ECDIS
- 1 ECDIS
- 1 radar
- 1 gyro compass
- 1 satellite compass
- 1 magnetic compass
- 1 auto pilot
- 2 GPS navigator
- 1 VDR
- 4 echo sounders
- 2 plotter
- 2 trawl sonar/trawl monitoring
- 3 sonar
- 2 GSM phone
- 2 satellite communication systems
- 1 Satellite TV antenna
- Further communication system in fully compliance with GMDSS requirements

DECK EQUIPMENT

Vessel to be equipped with AC driven electric winches. Following to be installed:

- 1 Anchor windlass
- 2 Trawl winches
- 1 top line winch
- 2 Net drums
- 1 tail end winch
- 1 net sounder winch
- 9 mooring winches
- 4 auxiliary winches
- Automatic trawl operation system

CRANES

- 1 x deck crane, 5t/16m
- 1 x Fish pump crane, 3t/10m
- 1 x aft crane, 5t/16m with net stacker

SAFETY EQUIPMENT

- Safety equipment according to regulations for the specified authorities, class and number of crew.
- One MOB boat with hydraulic davit

RSW SYSTEM

11 RSW tanks total 2800 m³
Cooling capacity: 3 units each of 860.000 kcal/h

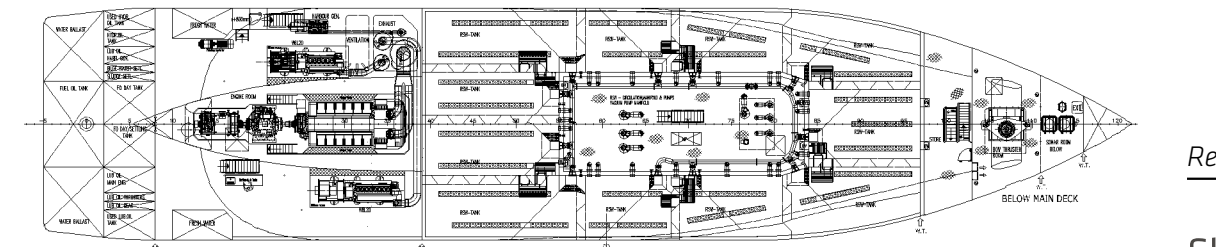
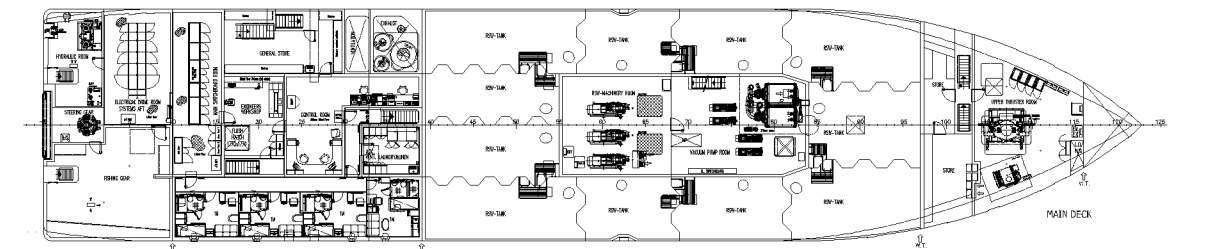
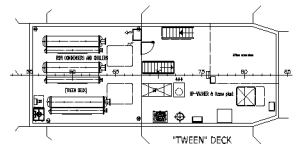
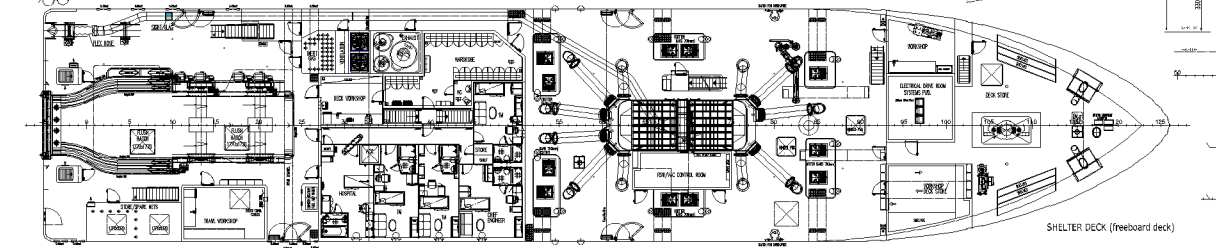
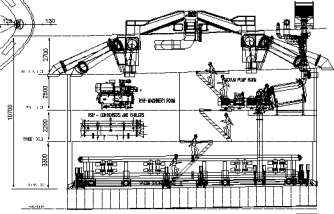
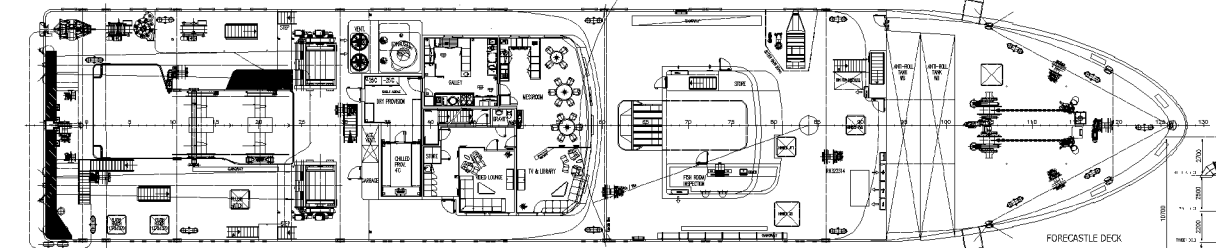
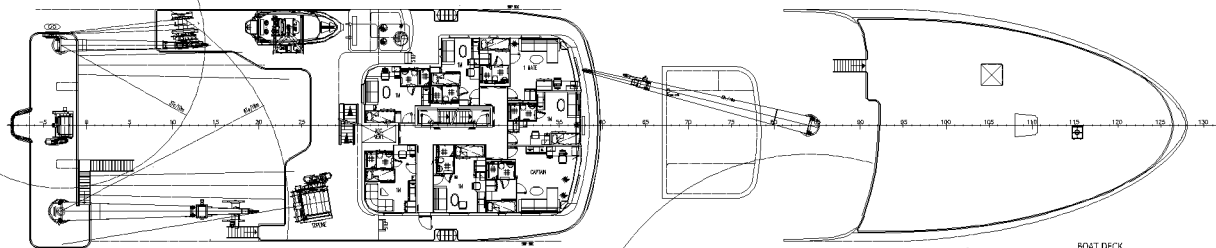
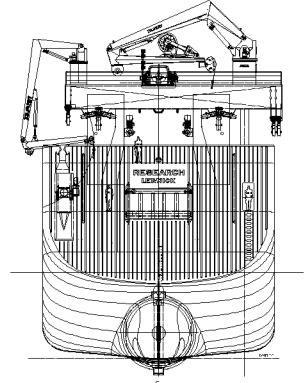
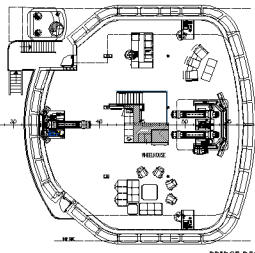
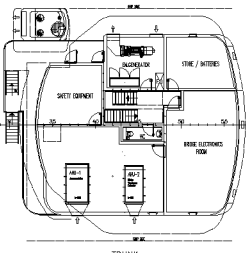
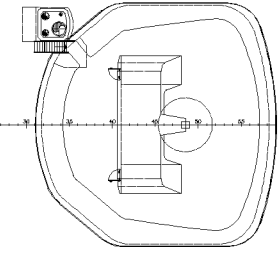
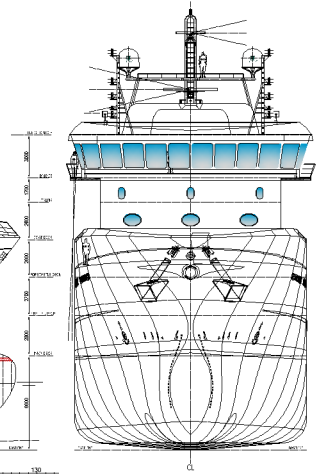
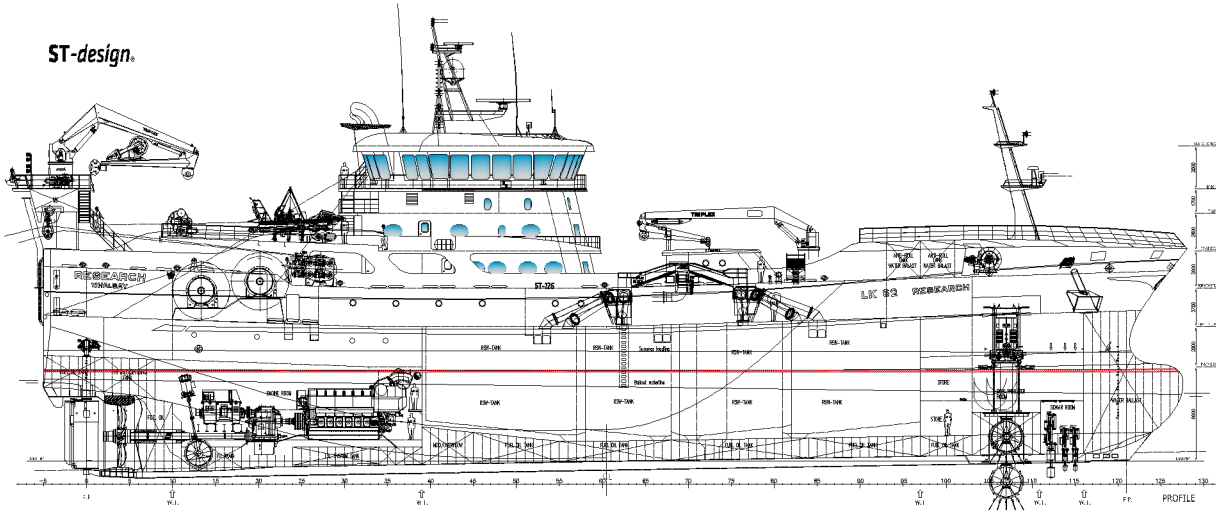
FISH PUMPING SYSTEM

Vessel is arranged with stern pumping on pt side aft. Electrical driven fishpump to be connected to cod end and stainless steel piping in straight line pt. side forward to strainer case with distribution to all RSW-tanks.

DISCHARGE EQUIPMENT

Vessel to be arranged with vacuum pump discharge system with 2 vacuum tanks and 3 vacuum compressors.
System to be arranged with stainless steel heavy duty piping system from each RSW-tank and onto landing station.

ST-design.



Research

Skipsteknisk

ST-design ®

GENUINE SHIP DESIGN - *freedom to create*

HAVNEVIK



SKIPSTEKNISK AS | Klaus Nilsens gt. 4, P.O.Box 36 Sentrum, NO-6001 Aalesund, Norway
PHONE +47 70 10 33 44 | FAX +47 70 10 33 48 | office@skipsteknisk.no | www.skipsteknisk.no

Skipsteknisk ®