

POSH SINCERO



3,300 DWT/ Platform Supply Vessel (PSV)/ DP 2 Call sign: 3EC07

Class Notation DNV +1A1, Firefighter (I+) COMF(V-3) DK(+) DYNPOS(AUTR) EO HL (2.8) SF TMON

Principal Particulars

Flag	Panama
Year Built	2010
Place Built	Bharati Shipyard Limited, India
Design Draft	5.00 m
Max Draft	5.90 m
Gross Tonnage	2,176.0 T
Net Tonnage	691.0 T
Deadweight (Max Draft)	3,300.0 T @ 5.90m draft
Displacement	5,200 T
IMO No.	9499307
Design	Rolls-Royce UT 755 LN

Dimensions

Length Overall	73.60 m
Beam Overall	16.00 m
Depth Moulded	07.00 m

Performance

Max Speed	12.00 kts
Economical Speed	10.00 kts

* Subject to actual weather and operating conditions

Cargo Deck

Deck Cargo Area	670.0 m ²
Deck Cargo Dimension	51.0 m x 13.3 m
Deck Cargo Capacity	1,600.0 T
Deck Strength	5.0 T/m ²
Reefer Points	4 x 440V

Capacities

Fuel Tank	887 m ³
Fresh Water	697 m ³
Drill Water *	1,326.6 m ³
Ballast Water *	1,540.4 m ³
Mud Tank *	820.4 m ³
Brine Tank *	820.4 m ³
Dry Bulk Tank	251.5 m ³ (in 5 tanks)

* Indicates tanks with shared capacity

Discharging Rates

Drill Water/Pump	1 x 150 m ³ /hr@85 m head
Fresh Water/Pump	1 x 150 m ³ /hr@90 m head
Fuel/Pump	1 x 150 m ³ /hr@100 m head
Brine/Pump	1 x 75 m ³ /hr@65 m head
Liquid mud/Pump	1 x 100 m ³ /hr@100 m head
Dry Bulk Tank	2 x 75 m ³ /hr@85 m head

Accommodation

1 – Berth Cabins	5
2 – Berth Cabins	6
6 – Berth Cabins	2
Total (POB)	29

Machinery & Equipment

Main Engine	MAK 2 x 1,980 kW @ 750 RPM
Shaft Generator	MAN 2 x 1,750 kW
Auxiliary Generators	MAN 2 x 250 kW
Emergency Generator	MAN 1 x 72 kW

Thruster & Propulsion

Azimuth Thruster	Rolls-Royce 2 x 1470 kW, US 205 CP with nozzle
Bow Thruster	Rolls-Royce 2 x 791.2 BHP, 289 RPM
Stern Thruster	Rolls-Royce 2 x 791.2 BHP, 289 RPM

Deck Crane

Fixed Crane	SWL 3.0 T @ 16.0 m radius
-------------	---------------------------

Mooring Equipment

Anchors	2 x SPEK Type Anchor; 2,850 kg each
Anchor Windlass	1 x 8.0 T each @ 0-12 m/min
Tugger Winch	Rolls-Royce 1 x 8.0 T each @ 0-19 m/min
Capstans	2 x 8.0 T each @ 0-16 m/min

Dynamic Positioning System

DP Class	DP 2 Dynpos AUTR, Rolls-Royce, Poscon joystick system
References	2 x DGPS + 1 Cyscan

Fire Fighting and Rescue

Firefighting System	FiFi 1
FiFi Pump	2 x 1,200 m ³ /hr
FiFi Monitors	1 x 300 m ³ /hr
Spray Booms	2 x 6.0 m/Fixed Nozzle
Dispersant Capacity	12.57 m ³
Foam Capacity	NIL
Rescue Boat	1 x 6 man/40 hp
Life rafts	2 x 25 man, 2 x 20 man, 2 x 12 man
Life Buoys	8
Life Jackets	34
Immersion Suits	34

CARGO CAPACITY PLAN

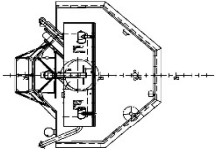
Tank No.	Volume m ³	Fuel m ³ SG 0.900	Fresh Water m ³ SG 1.000	Ballast Water m ³ SG 1.025	Mud m ³ SG 3.000	Brine m ³ SG 2.800	ORO m ³ SG 1.000	Drill Water m ³ SG 1.000	Dry Bulk m ³ SG 2.160	Methanol m ³ SG 0.791	Base Oil m ³ SG 0.830
1	33.00			33.00				33.00			
1A	72.30		72.30								
2	72.30		72.30								
3	74.40			74.40				74.40			
4	95.80			95.80				95.80			
5	60.00			60.00				60.00			
6	59.00			59.00				59.00			
7	85.70			85.70				85.70			
8	85.70			85.70				85.70			
9	79.20			79.20				79.20			
10	79.20			81.20				79.20			
11	54.60		54.60								
12	54.90		54.90								
13	51.00		51.00								
14	51.30		51.30								
15	77.50			77.50				77.50			
16	77.50			77.50				77.50			
17	26.30		26.30								
18	62.50		62.50								
19	170.40		170.40	170.40				170.40			
20	64.10	64.10								64.10	
21	71.20	71.20								71.20	
21A	211.80			211.80							
22	81.40		81.40								
22A	19.60	19.60									
23	19.60	19.60									
24	15.70	15.70									
25	82.10	82.10									
26	82.10	82.10									
27	82.10	82.10									82.1
27A	82.10	82.10									82.1
28	82.10	82.10									82.1
29	82.10	82.10									82.1
44	102.10	102.10			102.10	102.10					
45	102.10	102.10			102.10	102.10					
45	102.70				102.70	102.70	102.70				
46	102.70				102.70	102.70	102.70				
47	102.70				102.70	102.70	102.70				
SUM		887	697	1540.4	820.4	820.4	616.2	1326.6	251.5	135.3	328.4

Particulars given herein are believed to be correct but not guaranteed. Owners reserve the rights to amend specifications without notification.

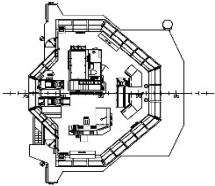


Rolls-Royce
UT-Design™
UT 755 LN

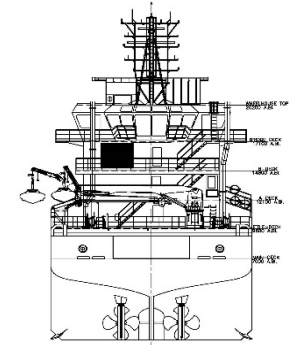
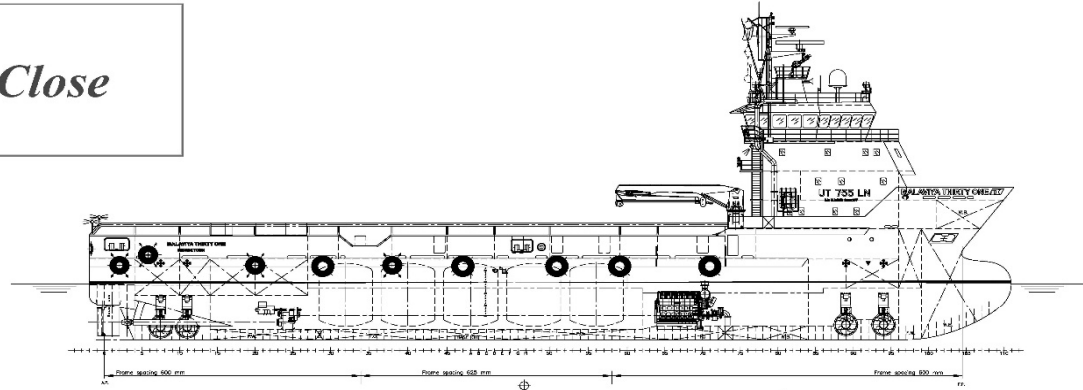
Close



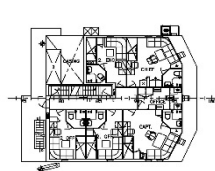
TOP WHEELHOUSE



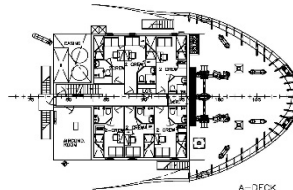
BRIDGE DECK



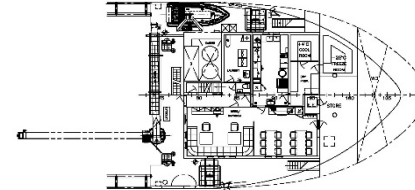
AF-1 VIEW



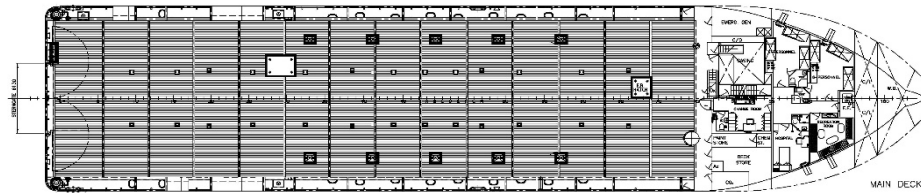
B-DECK



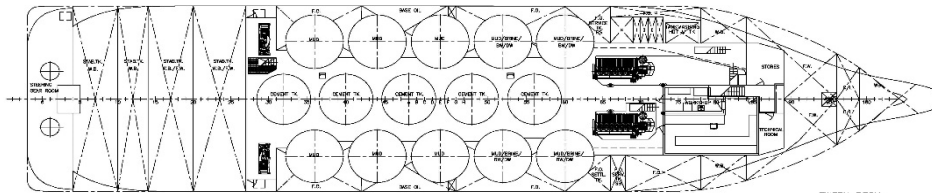
A-DECK



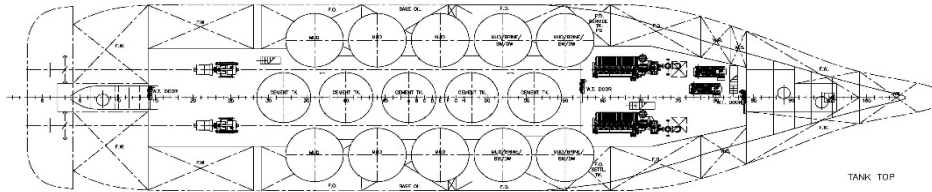
FORECASTLE DECK



MAIN DECK



TWEEN DECK



TANK TOP

MAIN PARTICULARS

L.O.A.....	APPROX. 73.60 m
L.P.P.....	68.30 m
BREADTH MLD.....	16.00 m
DEPTH MAIN DK.....	7.00 m
DESIGN DRAFT.....	5.00 m
MAX DRAFT.....	APPROX. 5.90 m
COMPLEMENT	17 CREW + 12 S.P.
	TOTAL = 29 PERSONS

[AS FITTED]

REV.	DESCRIPTION	DATE	MOD. BY	CHKD. BY
BHARATI SHIPYARD LIMITED		CLIENT	SHIP PLATFORM SUPPLY VESSEL	
MALAYYA THIRTY ONE IMO.NO.9499307		GENERAL ARRANGEMENT		
SCALE	DRAWN	APPROVALS	YARD NUMBER	DRAWING NUMBER
1:200	TRACES	DESIGNER	V/359-360	V/359-708
	CHECKED	NAVAL	DATE: 27/10/07	SHEET 1 OF 1
	SEC. HEAD	CLASS	COPYRIGHT - THIS DOCUMENT/DRAWING IS THE PROPERTY OF BHARATI SHIPYARD LTD & CONTAINS CONFIDENTIAL INFORMATION WHICH MUST NOT BE COPIED WHOLLY OR IN PART NOR DISCLOSED TO ANY PERSON OR USED IN ANY MANNER WITHOUT BHARATI SHIPYARD LIMITED'S PRIOR WRITTEN PERMISSION.	
Rev.	Date	Reason for Issue	Made by	CHKD. BY
CU				
CU2				
Rolls-Royce UT-Design™		UT 755 LN GENERAL ARRANGEMENT		
Scale	Format	PROJECT NO.	SPT no.	Sheet no.
1:200	A1	067203 - 101 - 001		NIL

This manufacturer's information is the property of Rolls-Royce Marine AG. All rights reserved. This information is confidential and its disclosure to any third party without the prior written consent of Rolls-Royce Marine AG is prohibited. The information is provided for your information only and is not intended to constitute an offer or a contract. The information is provided for your information only and is not intended to constitute an offer or a contract. The information is provided for your information only and is not intended to constitute an offer or a contract.