

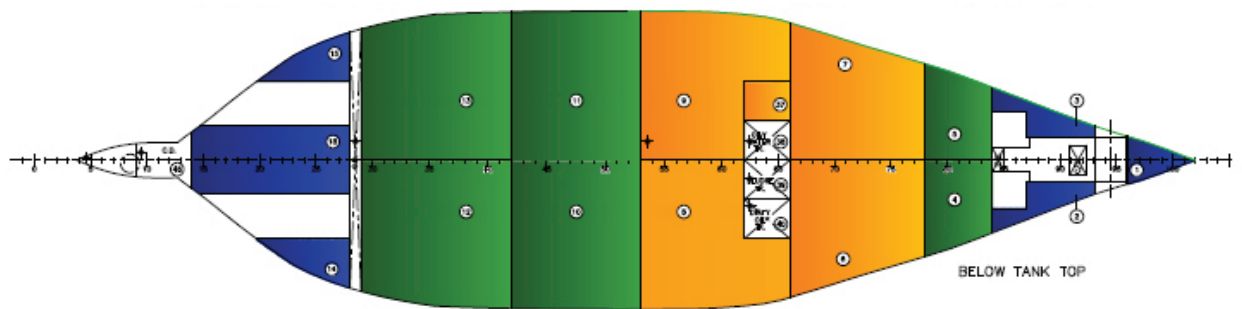
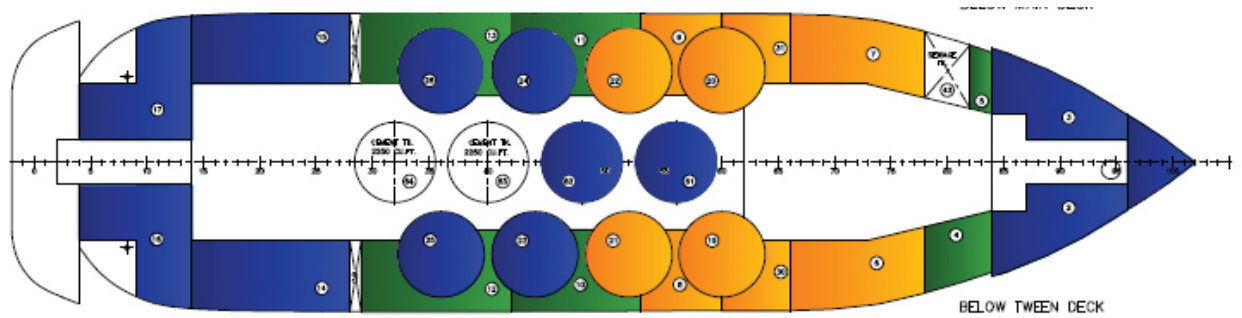
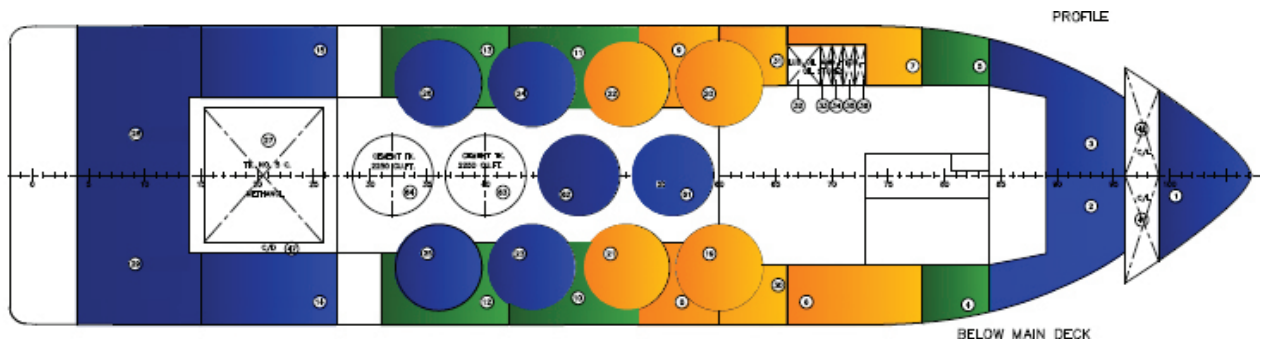
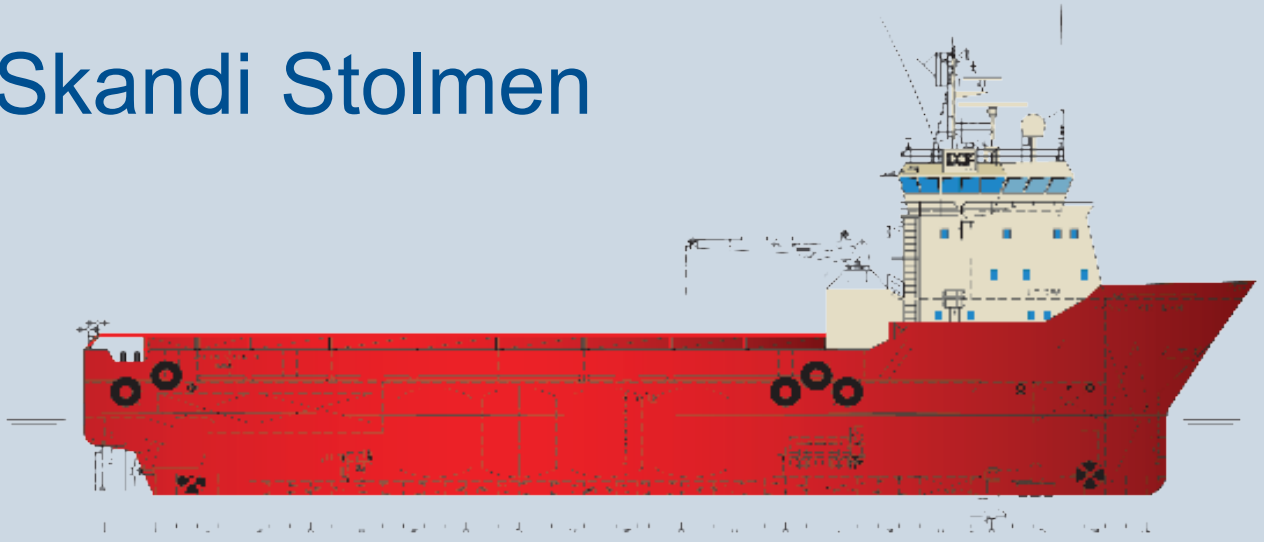


Design: UT 775
Build: 1997
IMO No: 9165970

Skandi Stolmen



Skandi Stolmen



- FUELOIL
- FRESH WATER
- WATERBALLAST

Tank capacities

			Cargo								
Tank ID	Contents	Capacity (m ³)	Cement	Mud	Fuel Oil	Fresh water	Base Oil	Brine	Drill Water	Methanol	Oil Rec.
Forepeak	DW/WB	105,4	2,400	2,500	0,900	1,000	0,830	2,500	1,000	0,791	1,000
DB/wing TK 1 Port	FW	112,3				112,3			105,4		
DB/wing TK 1 Stbd	FW	114,2				114,2					
DB/wing TK 2 Port	DW/WB	51,2							51,2		
DB/wing TK 2 Stbd	DW/WB	70,4							70,4		
DB/wing TK 3 Port	FO	155,1			139,5						
DB/wing TK 3 Stbd	FO	180,2			162,1						
DB/wing TK 4 Port	FO	87,5			78,7						
DB/wing TK 4 Stbd	FO	87,5			78,7						
DB/wing TK 5 Port	BO/ORO	102,3					84,9				102,3
DB/wing TK 5 Stbd	BO/ORO	102,3					84,9				102,3
DB/wing TK 6 Port	FO/ORO	140,9			126,8						140,9
DB/wing TK 6 Stbd	FO/ORO	140,9			126,8						140,9
Wing TK 7 Port	FW	145,9				145,9					
Wing TK 7 Stbd	FW	143,6				143,6					
DB TK 7 Ctr	FW	23,1				23,1					
CENTER TK 1 Port	MUD/BRINE/WB/DW	96,6		241,5				241,5	96,6		
CENTER TK 1 Stbd	MUD/BRINE/WB/DW	96,6		241,5				241,5	96,6		
CENTER TK 2 Port	MUD/BRINE/WB/DW	96,5		241,2				241,2	96,5		
CENTER TK 2 Stbd	MUD/BRINE/WB/DW	96,5		241,2				241,2	96,5		
CENTER TK 3 Port	MUD/ORO	96,5		241,2							96,5
CENTER TK 3 Stbd	MUD/ORO	96,5		241,2							96,5
CENTER TK 4 Port	MUD/ORO	96,5		241,2							96,5
CENTER TK 4 Stbd	MUD/ORO	96,5		241,2							96,5
CENTER TK 5 Ctr	MET	81,9								64,7	
Wax Inhibitor tk	WAX	62,5									
CEMENT TK 1 Ctr	CEM	70,2	168,4								
CEMENT TK 2 Ctr	CEM	70,2	168,4								
CEMENT TK 3 Ctr	CEM	70,2	168,4								
CEMENT TK 4 Ctr	CEM	70,2	168,4								
CENTER Stab. TK	DW/WB	169,3							169,3		
TOTAL WEIGHTS			674	1930	713	539	170	965	613	65	872
TOTAL CAPACITY (m ³)			281	772	792	539	205	386	783	82	872
TOTAL CAPACITY (Cu.ft.)			9916	27270	27973	19038	7225	13639	27634	2892	30809

Ship service tanks

Contents	Capacity (m ³)
CD/WB	309,3
Dirty oil	11,3
Fuel oil service tanks	91,3
Gir oil	3,7
Hydraulic oil	3,7
Luboil	18,6
Sewage	19,2
Sludge	69,4
Wax Inhibitor	62,5

Technical data

Skandi Stolmen

GENERAL

Design	UT 775
Built by / Year	Brattvaag Skipsverft / 1997
Flag	Norwegian (NOR)
Port of Registry	Bergen
Classification	+1A1, OILREC, SF, LFL*, RP, E0, DK(+), HL (2,5), DYNPOS - AUT

MAIN PARTICULARS

LOA	67,0 m
LBP	61,8 m
Bredth Moulded	16,0 m
Draft Loaded	6,0 m
Draft Minimum	3,8 m
DWT	3100 t
GRT	1969 t
Net Tonnage	845 t

DECK CAPACITIES

Deck Area	13,5 x 42,4 (573 m ²)
Deck Cargo	1550 tonnes

DISCHARGE CAPACITIES

Fuel Oil	200 m ³ per hr at 9 bar (ticket printer flow meter)
Water	200 m ³ per hr at 9 bar
Dry Bulk	100 tonnes per hr at 5.6 bar, 80psi dual discharge system
Base Oil	150 m ³ per hr at 9 bar
Mud/Brine	75 m ³ per hr at 18 bar
Mud	75 m ³ per hr at 18 bar
Methanol	75 m ³ per hr at 90 mlc
Wax Inh.	2 x 50 m ³ /h
Sludge (option)	2 x 50 m ³ /h
Couplings	5" WECO
Control	Ulstein Tankender operation and monitoring system in engine

control room with remote monitor in wheelhouse

TANK CLEANING

Mud /Brine tanks arranged with Toftejorg hot water (70deg) cleaning system with chemical dosing.

DECK MACHINERY

Tugger Winch	Twin 10 tonnes tugger winches with overload safety cut offs
Crane	3 tonnes capacity, maximum outreach 16 m, 5 tonnes on 10 m outreach
Windlass	Twin anchor windlass and 550m K3 chain Twin cable lifters 12 tonnes, 15 m/minute
Anchors	Twin anchors type Spek
Capstans	Twin stern 8 tonnes capstans

CONTINGENCY EQUIPMENT

Lifeboat	1 x Rigid rescueboat of approved type
Liferafts	Liferafts and rescueboat together have capacity to accommodate 150% of the total crew/passangers on each side

Technical data

Skandi Stolmen

MACHINERY & PROPULSION

Main Engines	Twin Bergen KRMB9, 825 RPM (2 x 2005 kW, 5460 BHP)
Diesel Generators	2x saab-scania Type DSI 117814 445, 248 kW-450V-60 Hz
Shaft Generators	2 x 1280 kW, 450 V - 60 Hz
Emergency Diesel Generator	Cummins 4BT3 9G1 58 kW, 450 V - 60 Hz
Propeller Plant	2 x CP Ulstein 600 AGSC
Bow Thruster	Ulstein Tunnel 700 BHP, 1 x Ulstein Azimuth 700 BHP retractable
Stern Thruster	Ulstein Tunnel 800 BHP
Joystick	Integrated maneuvering system into Poscon joystick control and fore and aft bridge and wandering lead
Maintenance System	TM-Master
Econometer	Bridge displayed fuel oil consumption record system

NAVIGATION AND COMMUNICATION EQUIPMENT

Radar	Furuno 10 cm ARPA, Furuno 3 cm
Navigator	Furuno GP80. DGPS beacon receiver GR80
Weather	Furuno NX-500 Navtex Receiver
Echo Sounder	Taijo TD-L1100 MF
Gyrocompass	Sperry MK 37 VT
Autopilot	Sperry ADG 3000 with console and steering repeaters
Windspeed	Andeaa speed and direction indicator
Speed Log	Sperry SRD - 331 Doppler. Equipped to GMDSS Sea Area 3
Radio	Furuno FS-5000 - 400W SSB c/w Furuno DSC5
Telex	Furuno DP5 MF
VHF	2 x Sailor RT 2047/D DSC 1 x Sailor 2048 3 x GMDSS hand held sets Furuno FM2520 Simplex
Sat Comm	Inmarsat B, ABB NERA, SATURN B 2 Inmarsat C, ABB NERA, SATURN B
EPIRB	Jotron 305Mk2
SART	2 x Jotron SART 9GHz
UHF	4 x Motorola GP 900

PERFORMANCE / CONSUMPTION

Full speed	14 knots - 23 m ³ /day
Service speed	12,5 knots - 19,5 m ³ /day
Economical Speed	11 knots - 15,6 m ³ /day
Stand-by	N/A knots - 10 m ³ /day
DP Operation by rig	N/A knots - N/A m ³ /day
In port	N/A knots - 0,75 m ³ /day

ACCOMMODATION

Total Capacity	22 men
Officer Cabins	6 x 1 man
Crew Cabins	4 x 1 man 1 x 4 men
Passenger Cabins	2 x 4 men
Hospital	One fully furnished
Lounge	One fully equipped lounge with digital television
Gymnasium	1
Office	1
Conference room	1



DOF Platform Supply Vessel



Skandi Stolmen IMO: 9165970

www.dof.no

www.dofman.no | www.dofsubsea.no

produce by DOF Management AS