

DESIGN	Havyard 855
CLASSIFICATION	DNV + 1A1 – E0 – DYNPOS AUTR – SF – DK (+) – CLEAN DESIGN COMF(C3)(V3) – NAUT – AW – HELDK – SH – ICE C – DEICE
BUILDERS	HAVYARD LEIRVIK, BUILD NO 101
PORT OF REG.	FOSNAVAAG
FLAG	NORWEGIAN
MMSI	259 073 000
IMO NR	9505508
DELIVERY DATE	JUNE 2011
CALLSIGN	LGSY

DETAILS BELIEVED TO BE CORRECT, BUT NOT GUARANTEED.



M/V HAVILA SUBSEA

Outline Specification



M/V HAVILA SUBSEA

Technical Specification

MEASUREMENTS

Length o.a.:	98.00 m
Length b.p.p.:	84.00 m
Breath moulded:	19.80 m
Draught, Max.:	8.00 m
Freeboard, min.:	2.00 m
Gross tonnage:	8 552 t
Net tonnage:	2 565 t
Light ship:	5947

CLASSIFICATION

DNV + IAr – Eo – DYNPOS AUTR – SF – DK (+) – CLEAN DESIGN
COMF(C3)(V3) – NAUT – AW – HELDK – SH – ICE C – DEICE

CARGO CAPACITIES

Deck cargo:	1000MT VCG 0.80m above deck
Deck area:	600 m ²
Deck strength:	10 tonnes/m ²
Fuel Oil:	1 122 m ³
Pot water:	1 000 m ³
Water ballast:	3 000 m ³

MACHINERY / DIESEL ELECTRIC PROPULSION

Main Engines:	6 x Caterpillar 3516 C, 2150 kW
Main generators:	6 x SES 2100 kW/690V/60Hz
Harbour Engine:	
Harbour Generator:	
Emergency Engine:	1 x Caterpillar c9, 232 kW 690V/60 Hz

MAIN PROPULSION

2 x Ulstein Aquamaster AZP 120 CP NBC 35TME, 3500 KW

STERN TUNNEL THRUSTER

2 x Ulstein Aquamaster AZP 120 CP NBC 35TME,

FWD. TUNNEL THRUSTER

1 x Kamewa Ulstein TT2400 DPN CP, 1500 KW

FWD. RETRACTABLE THRUSTER

2 x Ulstein Aquamaster Azimuth Thruster UL 2001 FP, 1500 KW

MOON POOLS

1 x 7200 x 7200 mm

HELIDECK

Super Puma / Sikorsky S-92, D-value 21 m

PERFORMANCE / CONSUMPTION at 6,50m draft

1 El motor:	8,25 knots/ 9,40 m ³ /24 hrs
2 El motor:	11,10 knots/ 22,25 m ³ /24 hrs
3 El motor:	13,90 knots/ 31,20 m ³ /24 hrs
Max speed:	15,50 knots / 47.25 m ³ pr 24 hrs
DP Operation average winter North-Sea	12,20 m ³ /24 hrs
Harbour Mode	1,4 m ³ /24 hrs

BRIDGE DESIGN: NAUT - AW

- 1 x Consol forward bridge
- 1 x Consol aft bridge
- 1 x Consol each bridge wing
- 1 x Radio station
- 1 x DP station

AUTOMATION SYSTEM

Hayard IAS

LOADING COMPUTER

- 1 x Shipload

DP SYSTEM

- Maker: Rolls-Royce Marine
- Type: ICON, DP2
- Class notation: DP Class II / DYNPOS AUTR
- 1 x Cyscan Laser Position Reference Sensor System
- 2x Seapat 300
- 2 x Veripos VIPS 850
- 3 x Wind Sensor, Two- axis ultrasonic anemometer
- 2 x Dual Hydro acoustic system HiPAP 500

THRUSTER CONTROL

Remote Control System, RRM Helicon X3

BRIDGE WATCH MONITORING SYSTEM

Havyard Powertech IAS

ACCOMMODATION 78 PERSONS

Cabins	22 off single cabins
	28 off double cabins
	6 off office
	1 off Hospital
	2 off conference room
	1 off Sky lobby
	1 off Offline room
	1 off Online room
	1 off Heli-reception

LIFE SAVING EQUIPMENT

Safety Equipment:	Acc to NMD/SOLAS for 78 persons
Life Raft:	6 x 32 + 2 x men
Rescue boat:	Type Alusafe 770, 10 persons
Survival suits:	78 persons

INCINERATOR

1 x TeamtecGS 500 C

HOT WATER BOILER

1 x Pyro E1133 / 872 kw

ENTERTAINING EQUIPMENTS

Ship Equip Satellite TV / SEVSAT

1 x TV / Radio in all lounges

1 x Radio / TV in all cabins

1 x Gymnasium w/Equipments

DECK EQUIPMENT / OFFSHORE CRANE

Windlass	1 x ODIM comb. Windlass/ mooring winch type AMW h 52/3/45R-1C Max pull 200KN
Capstan	4 x ODIM Mooring winch Type: MC 10/30 H. Max pull 100 kn
Mooring Winch	4 x ODIM Type: MW H 100/30, Max pull 100 kn
Deck Crane C-Deck	1 x EFFER 275 M 360° foldable 2t-10m, 1 x ODIM
Offshore crane	1 x ODIM ABAS Subsea Knuckle Jib Crane, SWL 150T Type: OCS2100/150T - 12M / 10T - 32M
Tugger Winch	2 x ODIM tuggerwinch type: 100kn Max pull 100 Kn
Crane in ROV-hangar	2 x Effer 275 M 360° foldable 2t-10m
ROV Handling	2 x ODIM LARS for ROV Gantry Crane System SWL 12 Te

ANTI HEELING

2 x Framo Antiheeling Pump RBP 300-3 Vertical 1000m3/h

ANTI ROLLING SYSTEM

2 x Stabilizing tanks. Passive anti.roll system.

2 x Interring system

NAVIGATION EQUIPMENT

1x Radar Furuno FAR-2137S Arpa-S

1 x Radar: Furuno FCR-2117 Chart Arpa-X

1 x Radar slave monitor aft bridge

1 x AIS Transponder Fa-150

3 x Gyro: Anschutz Standard 22 GGG-R

1 x Autopilot : Anschutz Adaptive Autopilot, Nautopilot 2025-C

2 x DGPS: Furuno GP- 150

1 x VDR: Furuno VR-3000

1 x Echo Sounder: Furuno FE-700

1 x Echo Sounder : Furuno FCV- 1200

1 x Doppler Log: Furuno DS-80

2 x Elec. Chart: ECDIS type TECDIS

1 x Slave Elec. Chart: ECDIS type TECDIS

1x Navtex Furuno NX-700B

1x Conning system: Furuno

1 x Sound Reception System: VSS-111

1 x Bridge Watch Monitoring System

COMMUNICATION EQUIPMENT GMDSS A 4

1 x Furuno MF/HF/DSC Semi Duplex & Simplex Radio Station FS-2570.

1 x Furuno MF/HF/DSC Semi Duplex & Simplex Radio Station FS-1570.

2x Jablo com GSM-terminal for fax and voice.

1x Globe surfer II HSDPA-router with tri band solution.

Inmarsat-C. 1 x Furuno NX- 700-B Navtex Receiver

3 x GMDSS approved portable VHF, Model TRON TR-20

2 x Jotron Radar Transponder, Model TRON SART

1 x JOTRON EPIRB Automatic, Model TRON 40S

1 x JOTRON EPIRB Manuel, Model TRON 45SX

1 x Furuno INMARSAT-C w/ EGC, Model FELCOM 15

1 x Furuno INMARSAT Broadband 500

1x Sailor TT-3000 SSAS, Ship Security Alert System

2x Sailor RT5020 Duplex VHF for GMDSS/ DSC

3x Sailor RT2048 Simplex VHF / DSC

3 x MOTOROLA Fixed UHF, GM- 380

8 x MOTOROLA Portable UHF, GP388R

2 x MOTOROLA Portable UHF, EX approved, GP380

3x MOTOROLA GP388R VHF

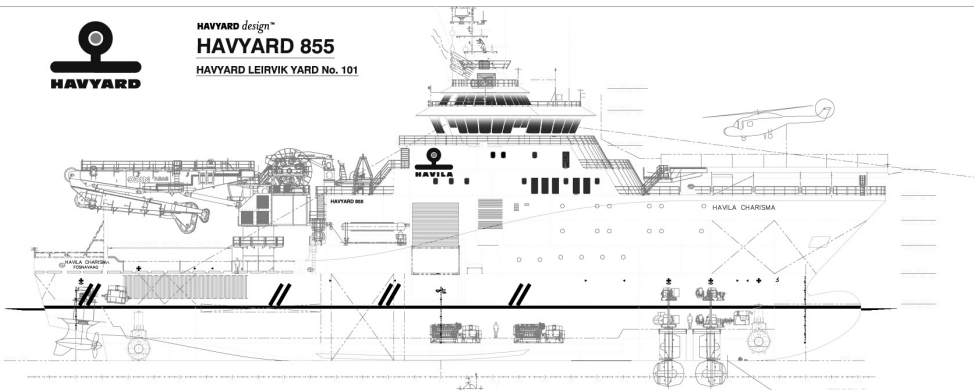
2x ICOM AERONAUTICAL VHF, Model IC-A110E

3 x ICOM AERONAUTICAL Portable VHF, Model A6E

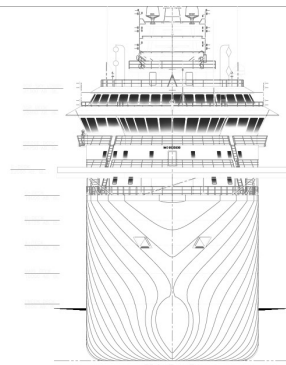
1 x HELIBEACON, Model TS-20B Single



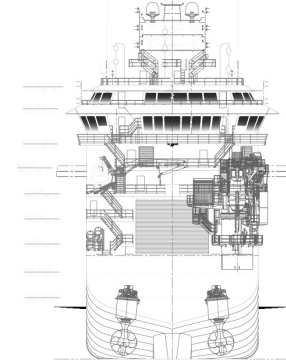
HAVYARD design™
HAVYARD 855
 HAVYARD LEIRVIK YARD No. 101



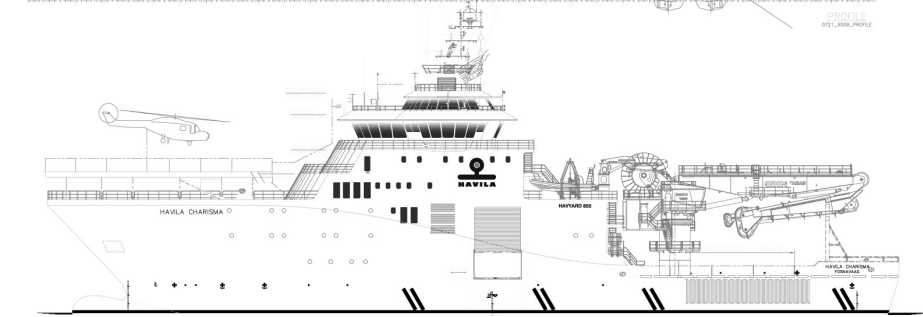
PROFILE
 0711_801_PROFILE



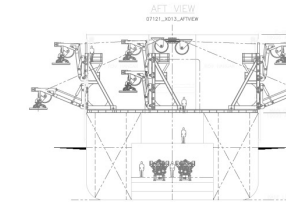
FRONT VIEW
 0711_801_FRONTVIEW



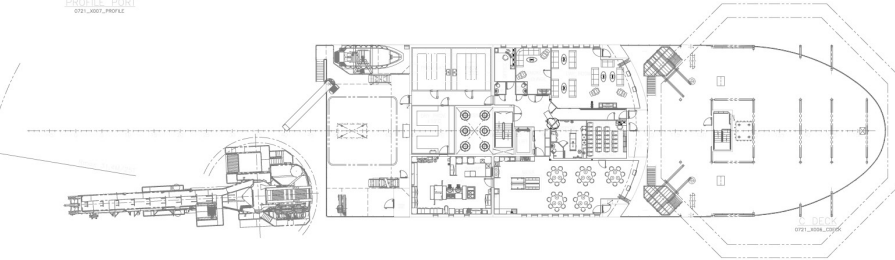
AFT VIEW
 0711_801_AFTVIEW



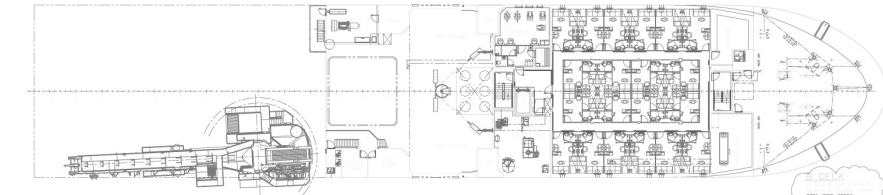
PROFILE PORT
 0711_801_PROFILE



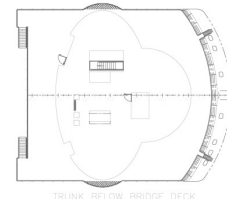
SECTION SKY HANGAR
 0711_801_SECTION



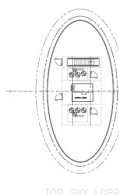
DECK
 0711_801_DECK



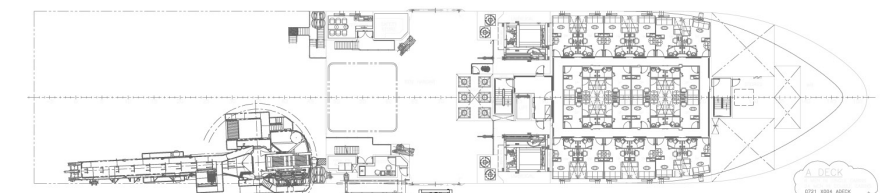
TRUNK BELOW BRIDGE DECK
 0711_801_TRUNKBELOWDECK



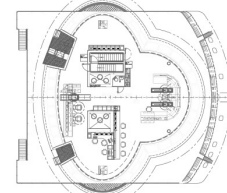
TRUNK BELOW BRIDGE DECK
 0711_801_TRUNKBELOWDECK



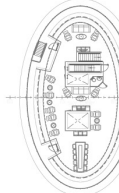
TOP SKY LOBBY
 0711_801_TOPSKYLOBBY



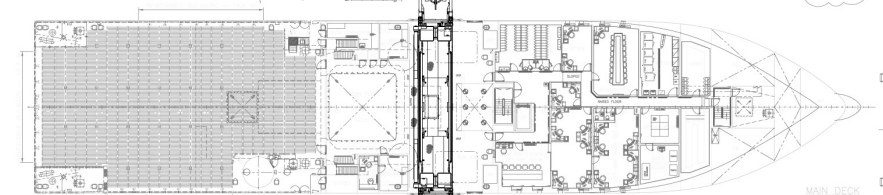
A DECK
 0711_801_ADECK



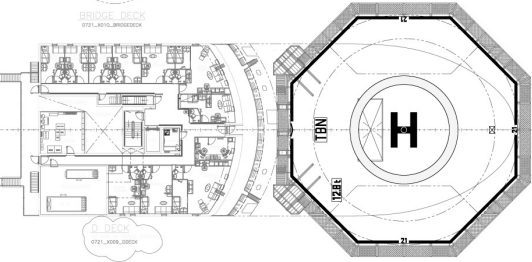
BRIDGE DECK
 0711_801_BRIDGEDECK



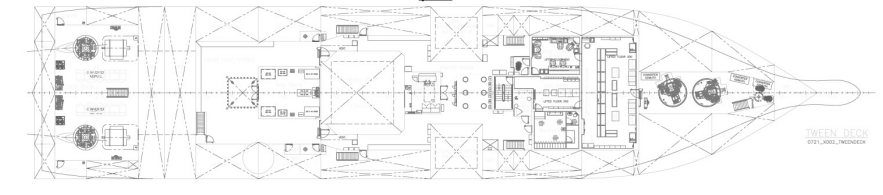
B DECK
 0711_801_BDECK



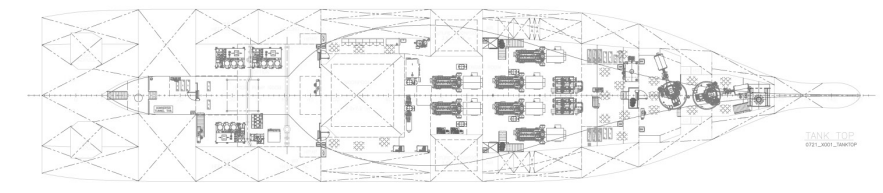
MAIN DECK
 0711_801_MAINDECK



B DECK
 0711_801_BDECK



TWEEN DECK
 0711_801_TWEENDECK



TANK TOP
 0711_801_TANKTOP

MAIN PARTICULARS:

- 100% steel hull and superstructure
- ISO 9001:2015 certified
- ISO 14001:2015 certified
- ISO 45001:2018 certified
- CEC (Classification Certificate)

CLASS:

ROV/SURVEY VESSEL

CAPACITIES:

- 1000 GRT
- 1000 DWT
- 1000 CBM

918 x 119.8 m	ROV/SURVEY VESSEL	ROV/SURVEY VESSEL	1:200	NOV 2024	07/21/2024-001	101-101-001

CARGO CAPACITY PLAN

Tank ID	Contents	Density	Volume	WB	FW	FO
			(M ³)	1,025	1,0	0,86
NR	M ₃	M ₃	M ₃	T	T	T
1 WB	WB	1,025	175,4	179,8		
2 PS WB	WB	1,025	118,6	121,6		
2 SB WB	WB	1,025	119,1	122,1		
3 PS WB	WB	1,025	123,8	126,9		
3 SB WB	WB	1,025	123,8	126,9		
4 PS FW	FW	1,000	150,8		150,8	
4 SB FW	FW	1,000	150,8		150,8	
5 WB	WB	1,025	80,6	82,6		
8 PS WB	WB	1,025	192,2	197,0		
8 SB WB	WB	1,025	192,2	197,0		
9 PS WB	WB	1,025	27,2	27,9		
9 SB WB	WB	1,025	27,2	27,9		
10 PS WB	WB	1,025	180,2	184,7		
10 SB WB	WB	1,025	180,2	184,7		
11 PS WB	WB	1,025	95,5	97,9		
11 SB WB	WB	1,025	95,5	97,9		
12 WB	WB	1,025	25,9	26,5		
14 PS WB/HEELING	WB	1,025	227,7	233,4		
14 SB WB/HEELING	WB	1,025	227,7	233,4		
15 PS FW	FW	1,000	171,1		171,1	
15 SB FW	FW	1,000	171,1		171,1	
16 PS WB	WB	1,025	113,9	116,7		
16 SB WB	WB	1,025	100,8	103,3		
17 PS WB	WB	1,025	162,8	166,9		
17 SB WB	WB	1,025	162,8	166,9		
23 PS FO	FO	0,86	138,8			124,9
23 SB FO	FO	0,86	168,6			151,7
24 PS FO SETTLL.	FO	0,86	31,5			28,4
24 SB FO SETTLL.	FO	0,86	31,5			28,4
25 PS FO DAY	FO	0,86	31,9			28,7
25 SB FO DAY	FO	0,86	31,9			28,7
29 PS FO	FO	0,86	265,9			239,3
29 SB FO	FO	0,86	278,9			251,0
51 WB	WB	1,025	203,7	208,9		
52 WB	WB	1,025	203,7	208,9		
55 WB	WB	1,025	240,5	246,5		
57 PS FW	FW	1,000	210,6		210,6	
57 SB FW	FW	1,000	226,2		226,2	
60 PS FO	FO	0,86	59,8			53,8
60 SB FO	FO	0,86	59,8			53,8
67 FO OVERFLOD	FO	0,86	23,9			21,5
73 PS WB/HEELING	WB	1,025	220,2	225,7		
73 SB WB/HEELING	WB	1,025	220,2	225,7		
TOTAL			6044,5	3937,7	1080,6	1010,2