

GENERAL INFORMATION

LENGTH BETWEEN PERPENDICULARS	88'-6"
LENGTH OVER ALL (MOLDED)	100'-0"
LENGTH OVERALL EXTREME	100'-10 ¹ / ₈ "
BREADTH, MOLDED	25'-0"
BREADTH, EXTREME OVER FENDERS	27'-9"
DRAFT (NORMAL) {	
FOR'WD	
AFT	
MEAN	

HEIGHTS ABOVE B.L.

TOP OF MAIN TOPMAST (RAISED POSITION)	44'-2 ⁷ / ₈ "
TOP OF MAIN TOPMAST (HOUSED POSITION)	35'-2 ¹⁵ / ₁₆ "
TOP OF FOREMAST BLINKER LIGHT (RAISED POSITION)	44'-11 ¹ / ₂ "
TOP OF FOREMAST BLINKER LIGHT (HOUSED POSITION)	35'-11 ⁹ / ₁₆ "
UPPER TOWING LIGHT BRACKET (RAISED POSITION)	37'-0 ¹ / ₈ "
LOWER TOWING LIGHT BRACKET (HOUSED POSITION)	31'-0 ¹ / ₁₆ "
☐ OF SEARCH-LIGHT	32'-9 ¹¹ / ₁₆ "
TOP OF SIDE LIGHT BASE	23'-11 ⁷ / ₈ " (P) 24'-0 ¹ / ₄ " (S)
TOP OF PILOT HOUSE AT ☐ FRAME NO. 18	30'-1 ¹ / ₂ "
TOP OF DECK HOUSE AT ☐ FRAME NO. 30	21'-6 ³ / ₈ "
PLATFORM DECK AT ☐ FRAME NO. 15	7'-11 ¹ / ₈ "

FIRE PLUGS

DECK	FR.	SIDE	No.
MAIN DECK	18	PORT	1
MAIN DECK	18	STBD	1
MAIN DECK	42	PORT	1
MAIN DECK	42	STBD	1
SUPER DECK	24	STBD	1
TOTAL			5

LIST OF SMALL BOATS

No.	TYPE AND SIZE	CAPACITY
1	16' METAL LIFEBOAT	10 MEN

COMPLEMENT

C.P. OFFICERS	2
CREW	8
TOTAL	10 MEN

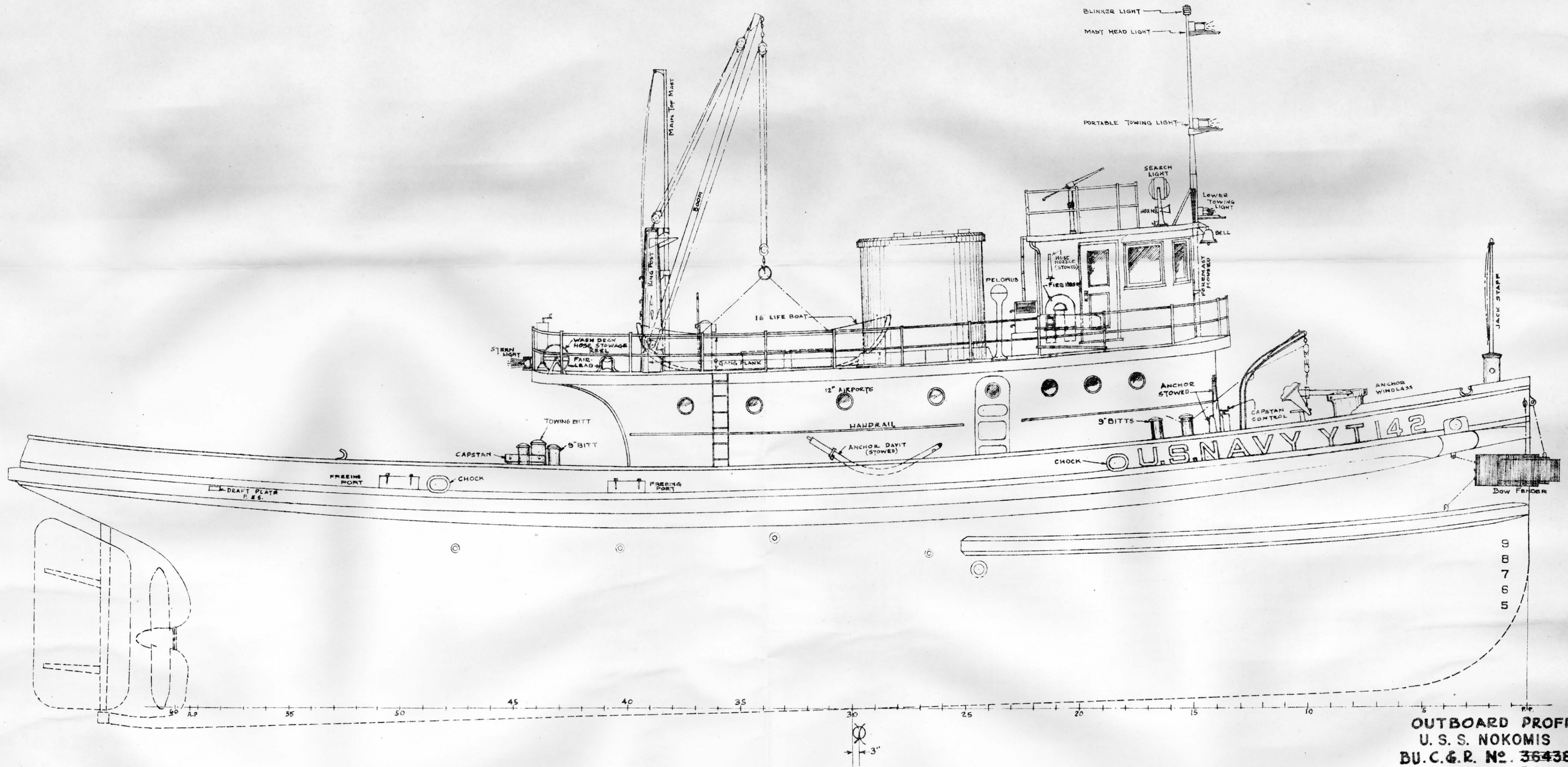
DIMENSIONS AND DATA

U. S. S. NOKOMIS

BU. C&R. No. 364388

Scale: $\frac{1}{4}$ " = 1'-0" 302022

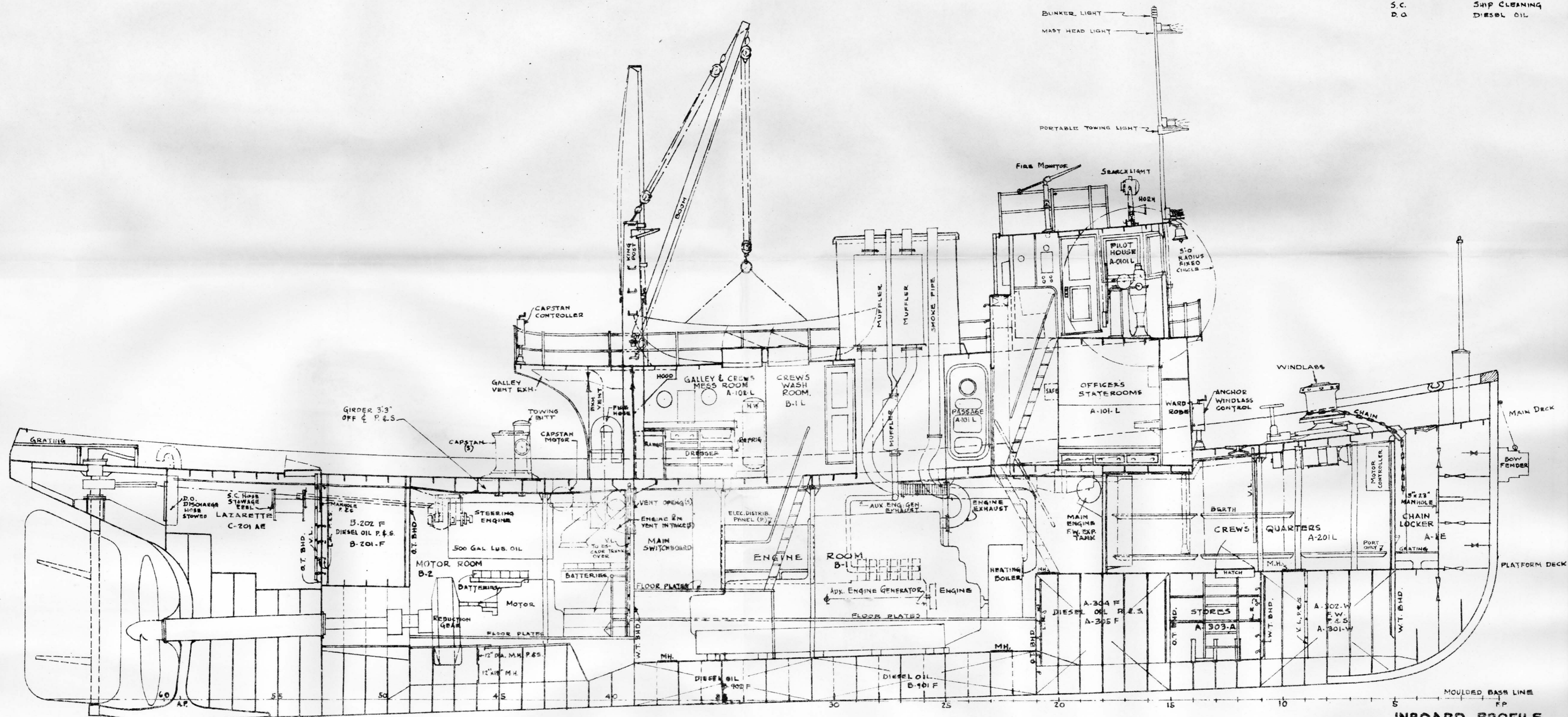
SHEET 2 OF 9 SHEETS



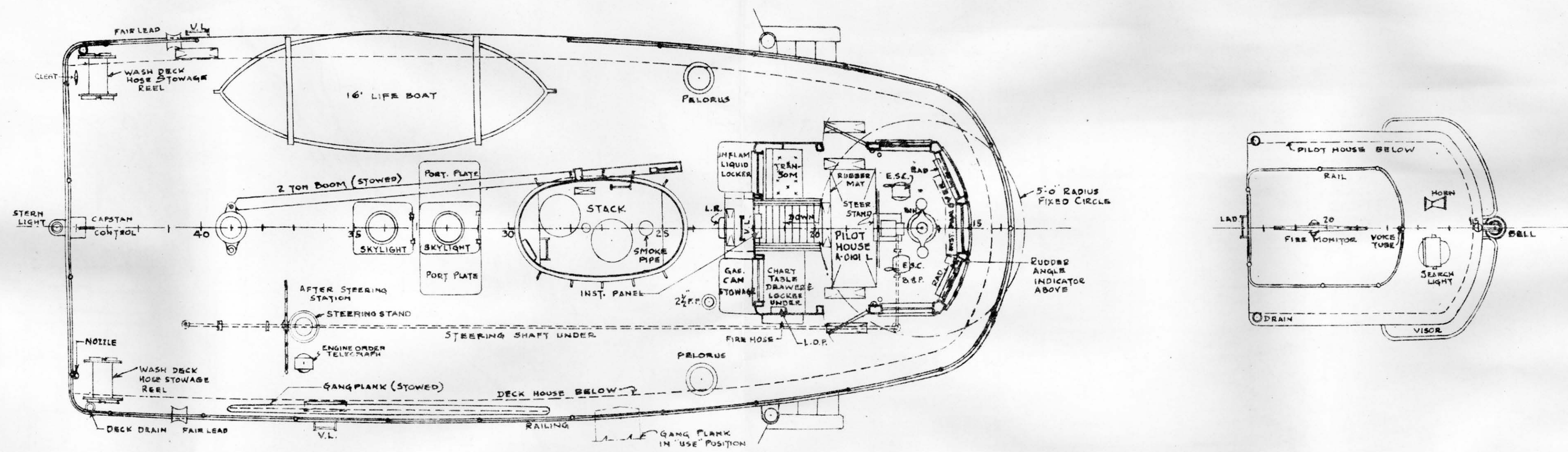
OUTBOARD PROFILE
U. S. S. NOKOMIS
BU. C. & R. No. 364385
 SCALE: 1/4" = 1'-0" 302022
SHEET 3 OF 9 SHEETS

ABBREVIATIONS

M.H.	MANHOLE
V.L.	VERTICAL LADDER
L.R.	LADDER RUNG
S.C.	SHIP CLEANING
D.O.	DIESEL OIL

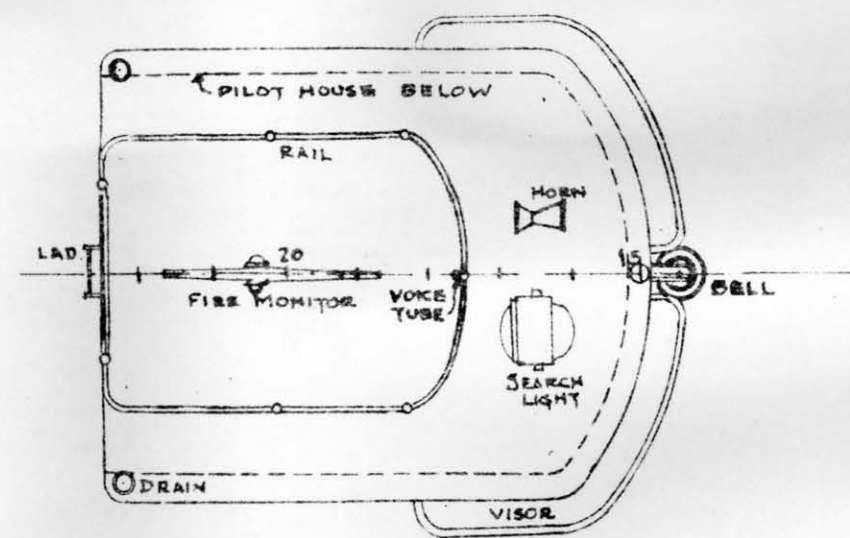


INBOARD PROFILE
 U.S.S. NOKOMIS
 BU. C. & R. No. 364385
 SCALE: 1/4" = 1'-0" 302022
 SHEET No. 4 OF 9 SHEETS



ABBREVIATIONS

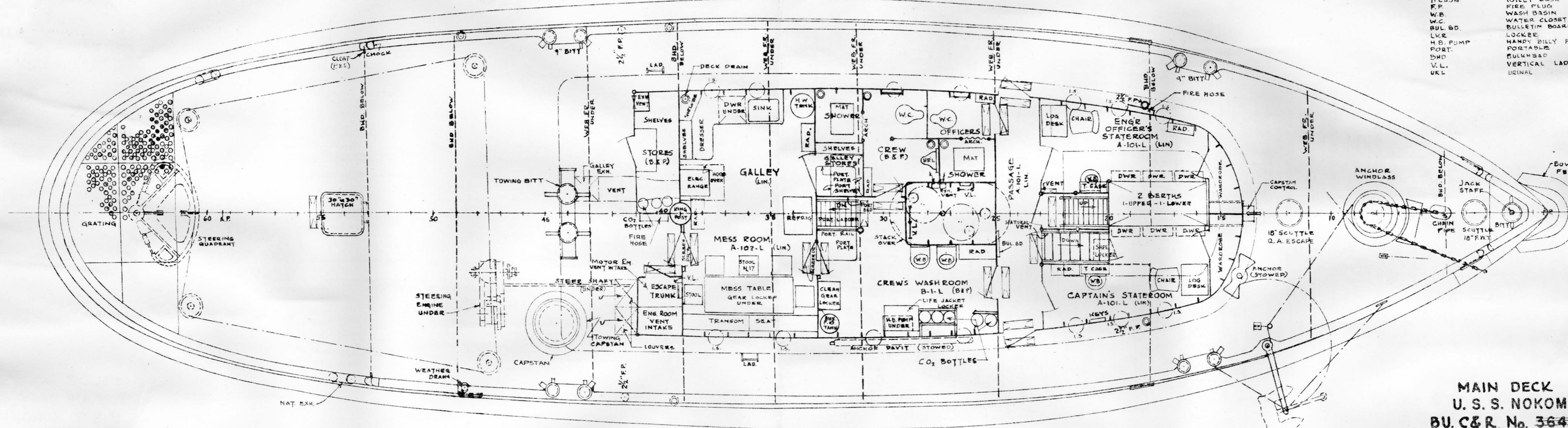
BIN.	BINNACLE
L.D.P.	LIGHT DISTRIB. PANEL
F.P.	FIRE PLUG
V.L.	VERTICAL LADDER
L.R.	LADDER RUNGS
RAD.	RADIATOR
INST. PAN.	INSTRUMENT PANEL
B. & P.	BARRE & PAINTED
PORT.	PORTABLE
E.S.C.	ENGINE SPEED CONTROLLER



PILOT HOUSE AND
TOP OF DECK HOUSE
U. S. S. NOKOMIS
BU. C. & R. No. 364385
Scale: $\frac{1}{4}'' = 1'-0''$ 302022
SHEET 5 OF 9 SHEETS

ABBREVIATIONS

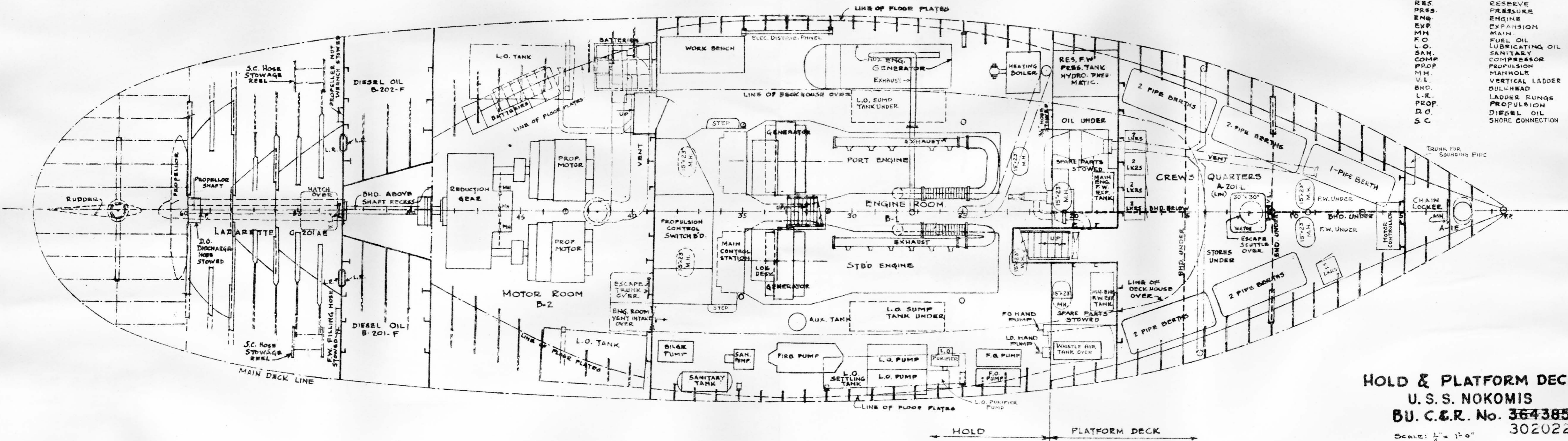
RAD.	RADIATOR
DWR.	DRAWER
T. CASE	TOILET CASE
F.P.	FIRE PLUG
W.B.	WASH BASIN
W.C.	WATER CLOSET
BUL. BD.	BULLETIN BOARD
LKR.	LOCKER
H.B. PUMP	HANDY BILLY PUMP
PORT.	PORTABLE
BHD.	BULKHEAD
V.L.	VERTICAL LADDER
URL.	URINAL



MAIN DECK
 U. S. S. NOKOMIS
 BU. C&R. No. 364385
 SCALE: 1/4" = 1'-0" 302022

ABBREVIATIONS

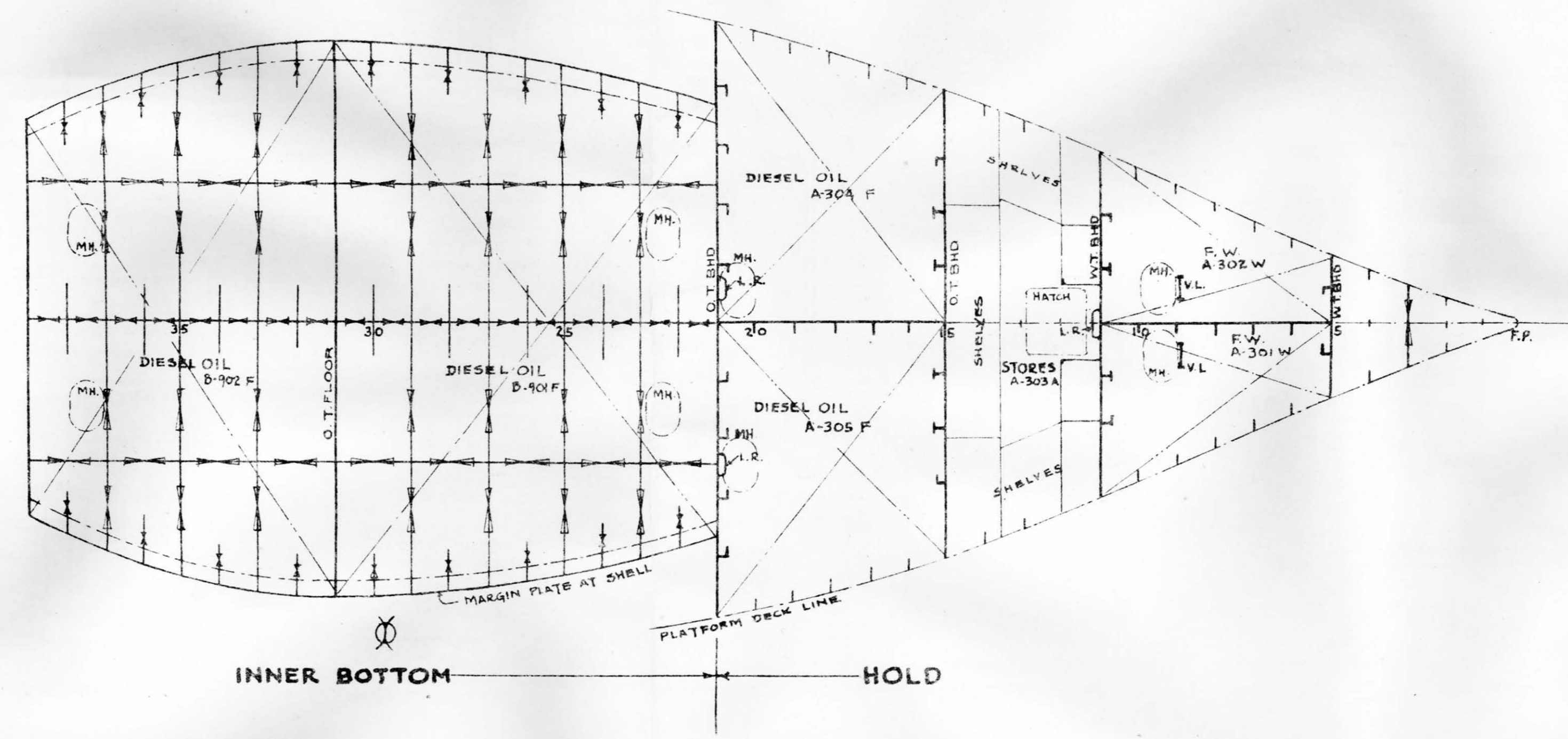
F.W.	FRESH WATER
LKRS	LOCKERS
RES	RESERVE
PRES.	PRESSURE
ENG	ENGINE
EXP.	EXPANSION
MN	MAIN
F.O.	FUEL OIL
L.O.	LUBRICATING OIL
SAN.	SANITARY
COMP	COMPRESSOR
PROP	PROPULSION
M.H.	MANHOLE
V.L.	VERTICAL LADDER
B.H.	BULKHEAD
L.R.	LADDER RUNGS
PROP.	PROPULSION
D.O.	DIESEL OIL
S.C.	SHORE CONNECTION



HOLD & PLATFORM DECK
U. S. S. NOKOMIS
BU. C.&R. No. 364385
 Scale: 1/4" = 1'-0"
 302022

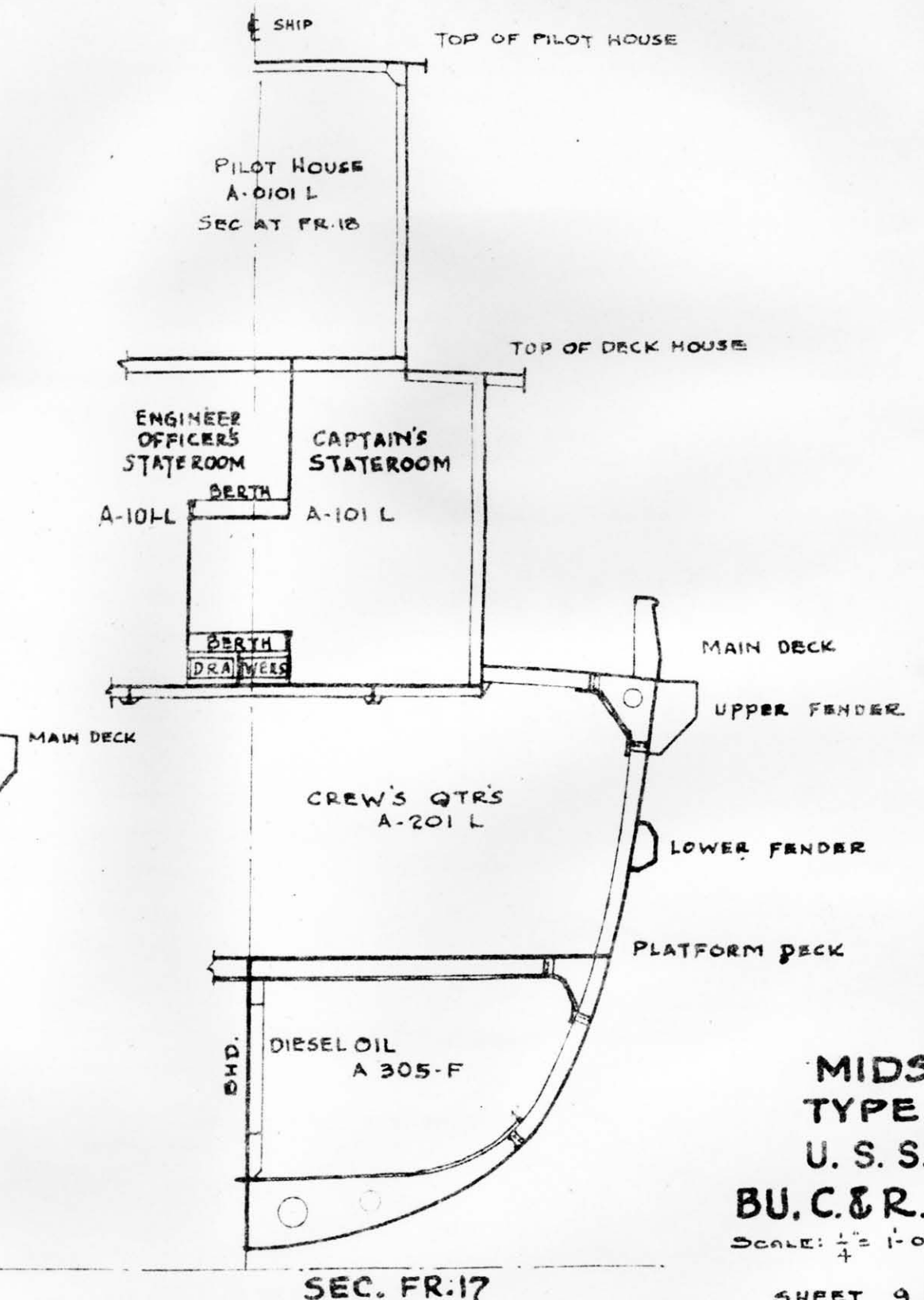
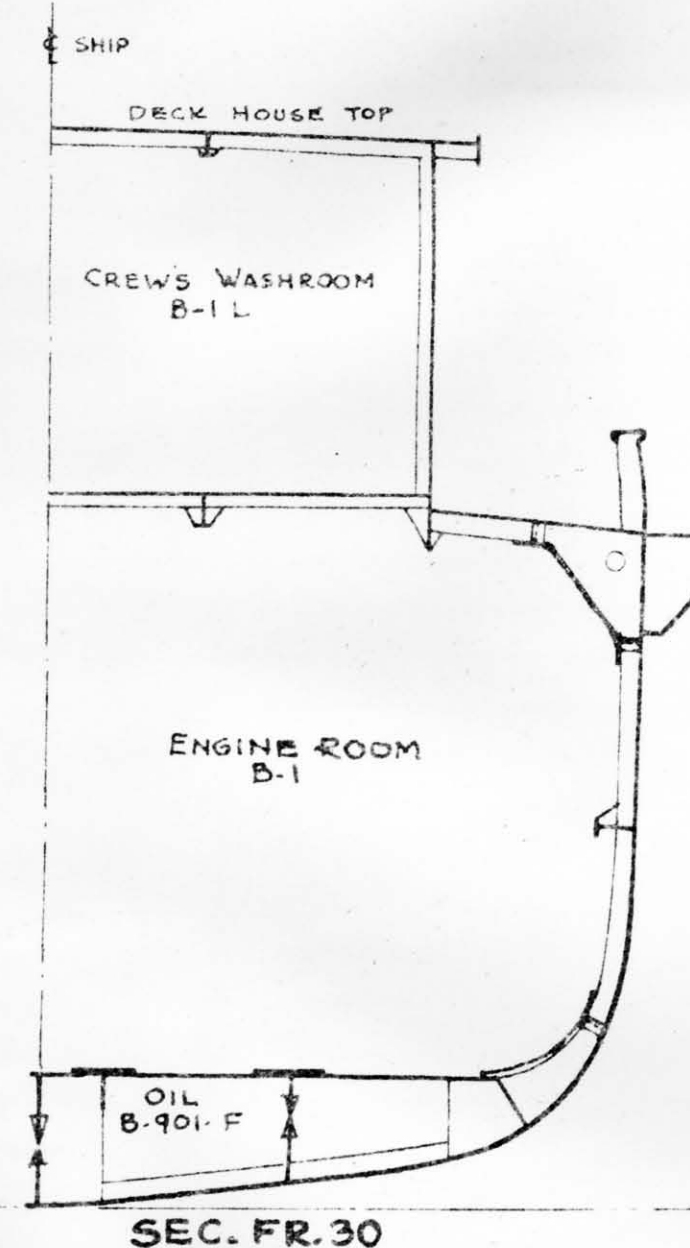
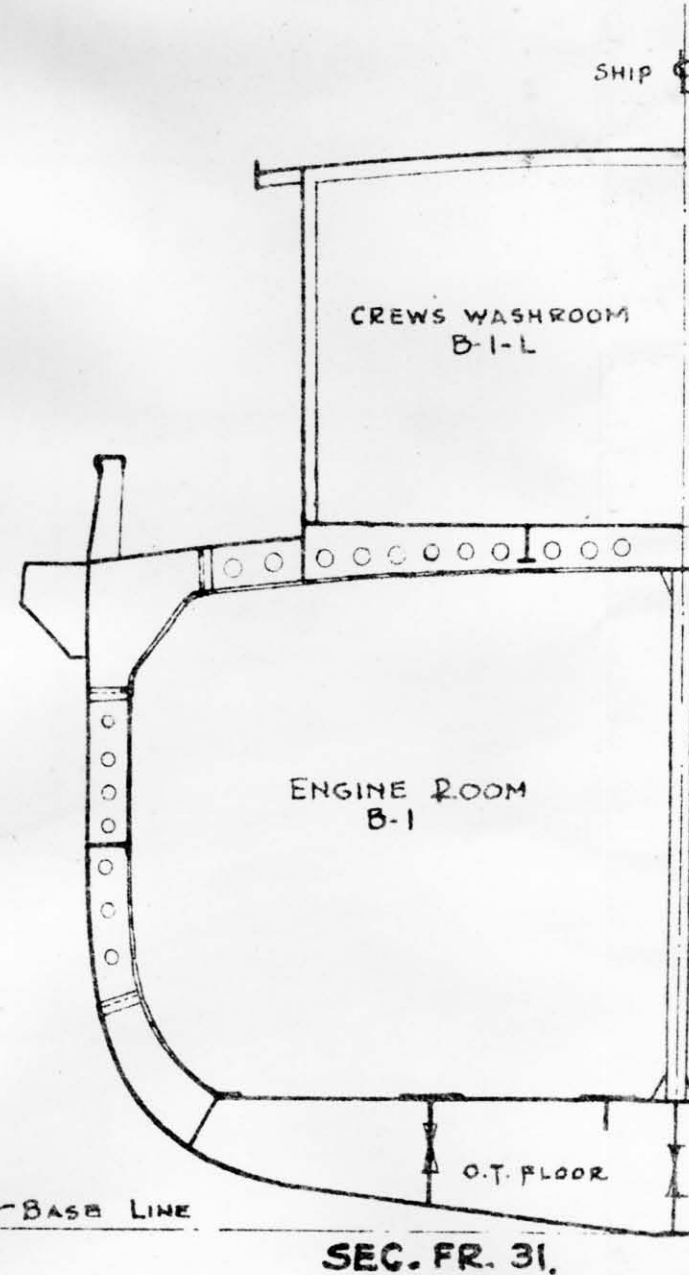
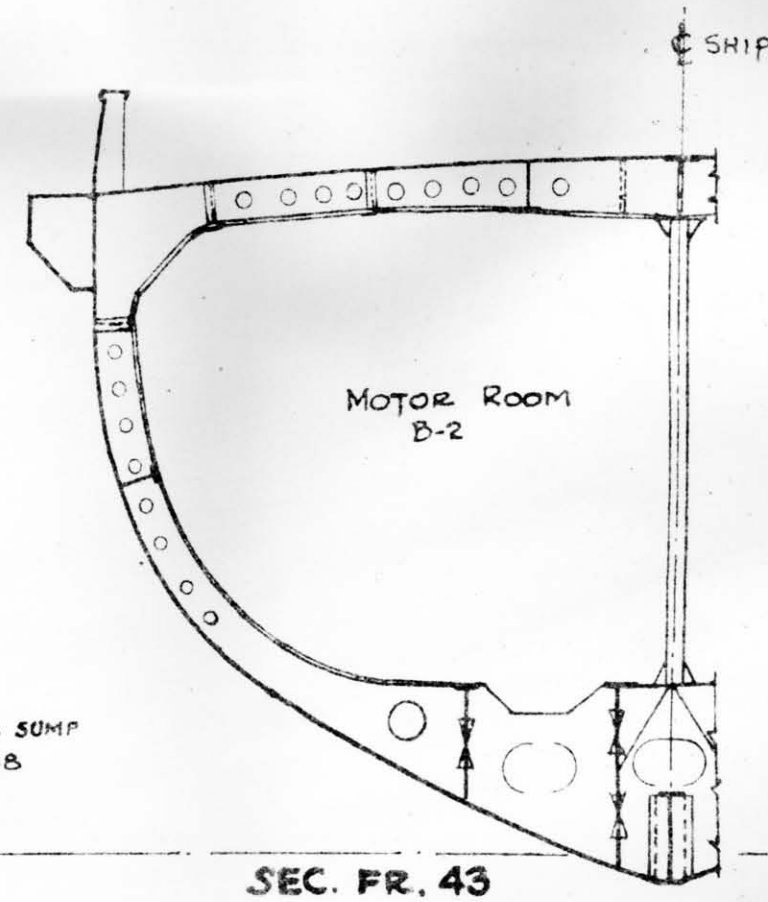
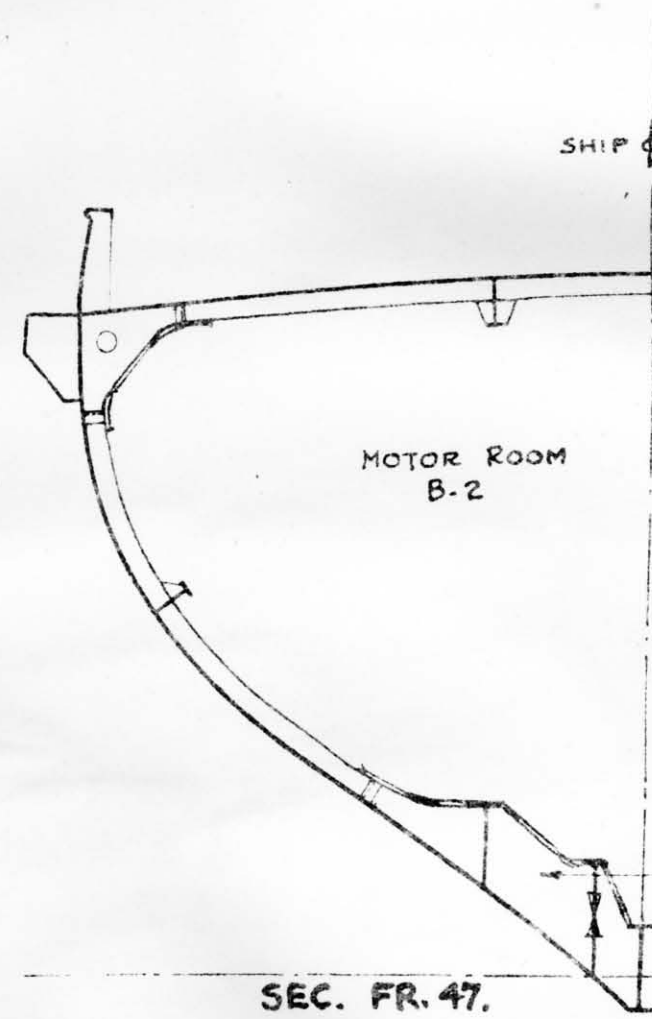
ABBREVIATIONS

- V.L. VERTICAL LADDER
- L.R. LADDER RUNGS
- MH. MANHOLE
- F.W. FRESH WATER



INNER BOTTOM ————— HOLD

INNER BOTTOM AND HOLD
 U. S. S. NOKOMIS
 BU. C. & R. No. ~~364385~~
 SCALE: $\frac{1}{4}'' = 1'-0''$ 302022
 SHEET 8 OF 9 SHEETS.



MIDSHIP AND
TYPE SECTIONS
U. S. S. NOKOMIS
BU. C. & R. No. 364385
SCALE: 1/4" = 1'-0"
302022
SHEET 9 OF 9 SHEETS