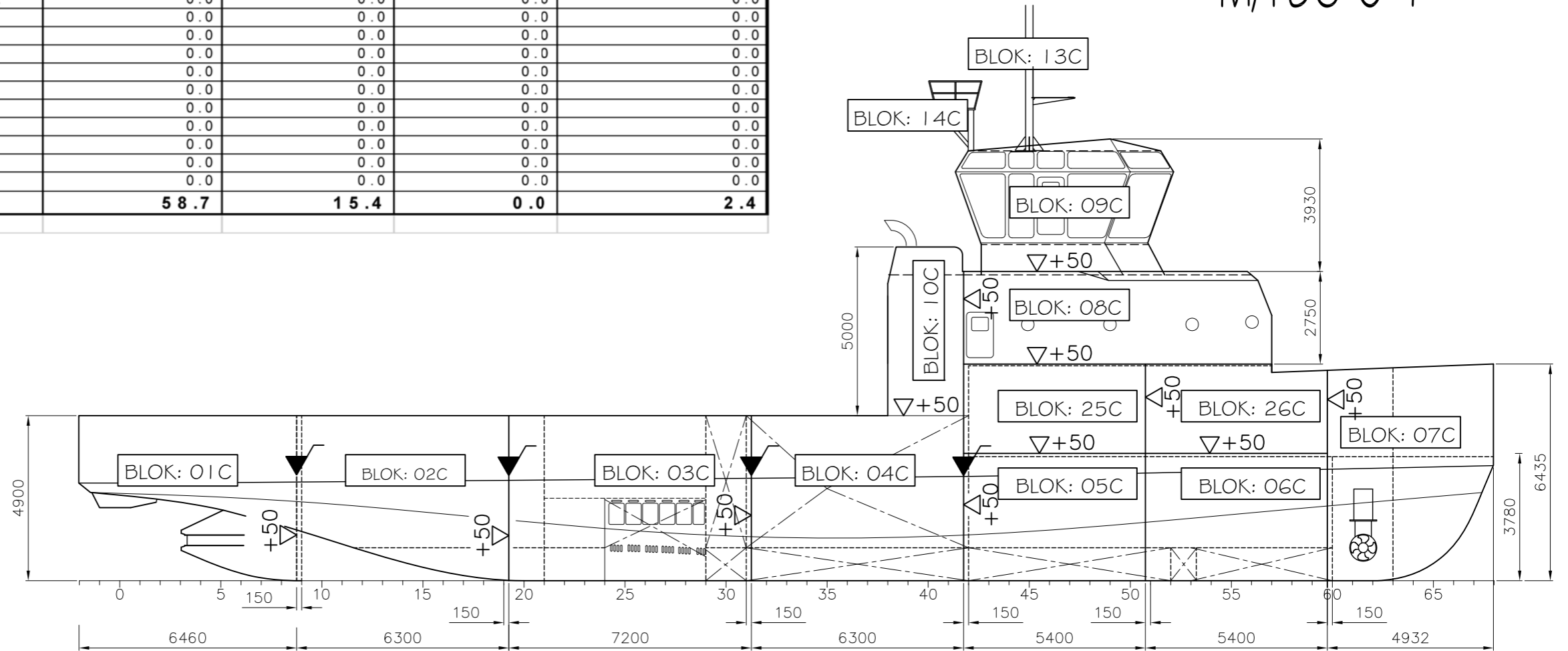


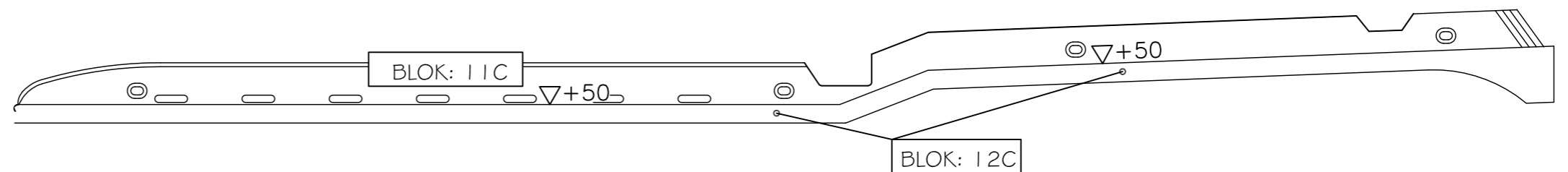
BLOCK NR	DESCRIPTION	WEIGHT	GRAVITY CENTER		
		(Ton)	X: (m)	Y: (m)	Z: (m)
BL01C	AFT PEAK	0.0	0.0	0.0	0.0
BL02C	ENGINE SPACE-AFT	0.0	0.0	0.0	0.0
BL03C	ENGINE SPACE-MIDDLE	58.7	15.4	0.0	2.4
BL04C	ENGINE SPACE-FORE	0.0	0.0	0.0	0.0
BL05C	CREW SPACE-LOWER-AFT	0.0	0.0	0.0	0.0
BL25C	CREW SPACE-UPPER-AFT	0.0	0.0	0.0	0.0
BL06C	CREW SPACE-LOWER-FORE	0.0	0.0	0.0	0.0
BL26C	CREW SPACE-UPPER-FORE	0.0	0.0	0.0	0.0
BL07C	FORE PEAK	0.0	0.0	0.0	0.0
BL08C	UPPER DECK	0.0	0.0	0.0	0.0
BL09C	WHEEL HOUSE	0.0	0.0	0.0	0.0
BL10C	FUNNEL-HVAC-CO2	0.0	0.0	0.0	0.0
BL11C	BULWARK (ALL)	0.0	0.0	0.0	0.0
BL12C	FENDERS (ALL)	0.0	0.0	0.0	0.0
BL13C	MAST OF LIGHTS	0.0	0.0	0.0	0.0
BL14C	FIRE GUN FAUND.	0.0	0.0	0.0	0.0
BL15C	OTHER FAUNDATIONS	0.0	0.0	0.0	0.0
		0.0	0.0	0.0	0.0
		0.0	0.0	0.0	0.0
<b>TOTAL WEIGHT:</b>		<b>58.7</b>	<b>15.4</b>	<b>0.0</b>	<b>2.4</b>

# ALBROS

## "M/TUG 01"



FRAME SPACING: 600mm (ALL)



**MAIN DIMENSIONS**

Loa	42.000 m
Lwl	41.695 m
Lbp	40.495 m
B	12.500 m
D	4.830 m
Tdesign	2.750 m
Tworking	2.500 m
BP	50.000 t

@ T=2.75m  
@ T=2.75m

**M.Engine** 3x Cummins KTA50-M2 1342 kW@1800RPM

**BARBAROS**  
GEMI INSAATI SAN. ve TIC. LTD. STI.  
ISTASYON MAH. VATAN CAD. ZIRVEKENT II H-1 D 10 TUZLA/ISTANBUL  
TEL:(216) 446 50 03 FAX:(216) 446 25 97

This document is the property of Barbaros Gemi Ins.San.ve Tic.Ltd.Istanbul.This document or any part there of may not be loaned, transferred, copied or be made use of in any other way without the permission of Barbaros Gemi Ins. San. ve Tic. Ltd. Istanbul, in case of no order this document and attachments are to be returned to Barbaros Gemi Ins.San ve Tic. Ltd. Istanbul.

### ALBROS "M/TUG01"

#### BLOCK PLAN

	DRAWN	DATE	SIGN.
	DRAWN	15.05.2007	K.BAL
A	CHECKED	15.05.2007	NB
BLOCK NAMES CHANGED		11.07	K.B.
DESIGNED	BARBAROS		
NO	REVISION	DATE	SIGN.
	CLASS:	B.V.	

COMMENT: GELIBOLU SY / NB.NR: 43/44		
OWNER: <b>ALBROS</b>	PROJECT NO: 211	SIZE: A3
DRW NO: 0473-001-001	Rev:	SCALE: 1:150
		A