

# THE KING GEORGE V CLASS PART 4

BY ROBERT DUMAS

## ANSON

**1942 – June 1944.** Admiralty intermediate disruptive type, colours 507A, B5, B6 and 507C.

**March 1945 – early 1946.** Admiralty standard type B with B20 panel and G45 over remainder of hull and upperworks (as in *King George V*)

**Early 1946 – end 1946.** Hull G10, superstructure G45

**1946 onwards.** Overall light grey.

## HOWE

**1942 – December 1944.** Admiralty intermediate disruptive type, colours 507A, B5, B6 and 507C. When docked in 1943 the patterns on port and starboard bow were modified.

**December 1944 – September 1945.** Modified Admiralty standard type with B20 hull and G45 superstructure.

**September – December 1945.** Admiralty standard Type B as *Anson*.

**December 1945 - end 1946.** Hull G10, superstructure G45.

**End 1946 onwards.** Overall light grey.

## FATES

*King George V.* Decommissioned 4 December 1949 and placed in reserve. Sold to Arnott Young, 1957 and arrived Dalmuir for scrapping 20 January 1958.

*Prince of Wales.* Sunk by Japanese aircraft off Malaya 10 December 1941.

*Duke of York.* Decommissioned September 1951 and placed in reserve. Sold to Shipbreaking Industries, 1957 and arrived Faslane for scrapping 18 February, 1958.

*Anson.* Decommissioned September 1949 and placed in reserve. Sold to Metal Industries Ltd, 1957 and arrived Faslane for scrapping 17 December 1957.

*Howe.* Decommissioned at Devonport at end 1951 and placed in reserve. Sold to T W Ward, 1957 and arrived Inverkeithing for scrapping 2 June 1958.

## SOURCES CONSULTED

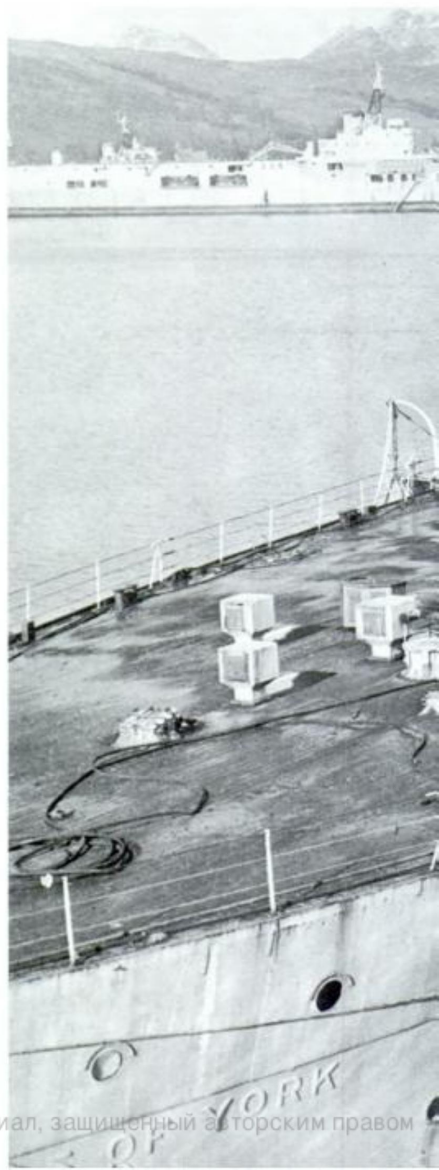
Official plans held by the National Maritime Museum, Greenwich. Author's photograph collection. The very fine and complete collection of Mr Pierre Froger (Paris)

Ensign I, *King George V class Battleships*, by Alan Raven

(Bivouac Books, London)

*British Battleships and Aircraft Carriers*, by H T Lenton

(Macdonald, London)



The *Duke of York* on 1 March 1958 shortly  
after her arrival at the Faslane yard of  
Shipbreaking Industries for scrapping.

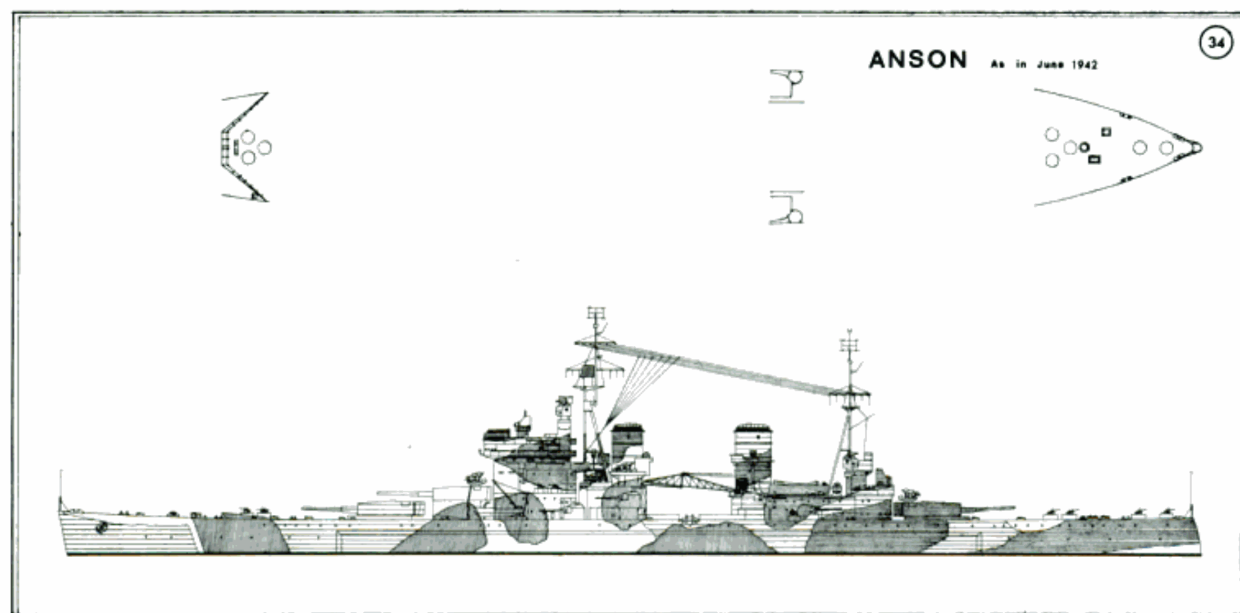
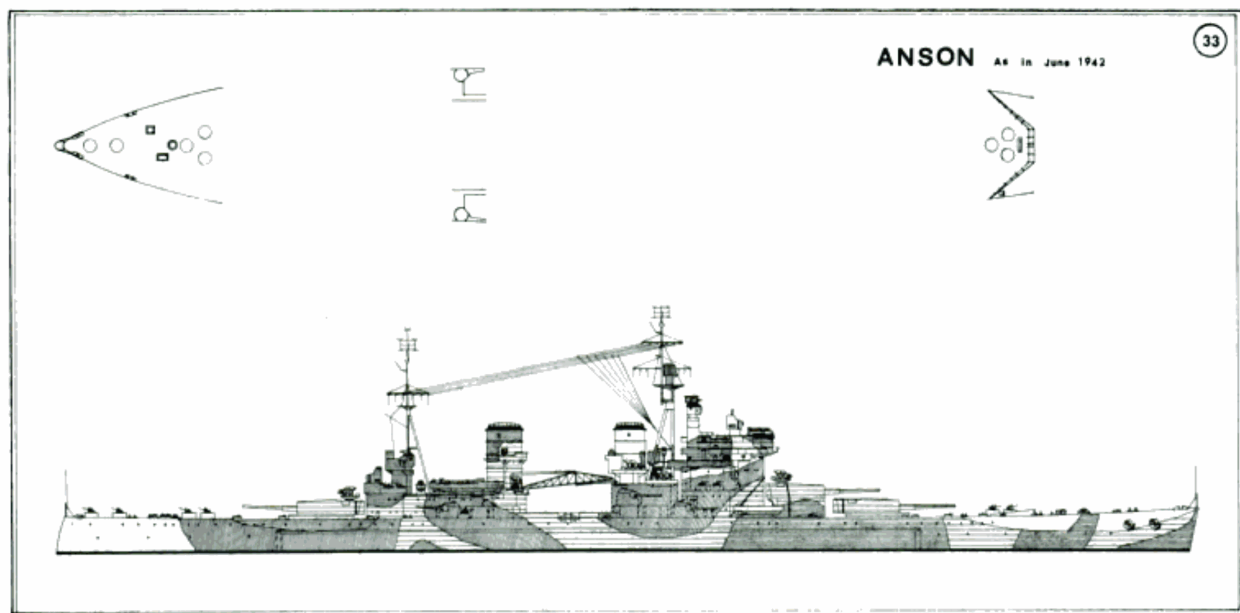
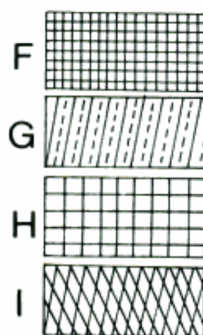
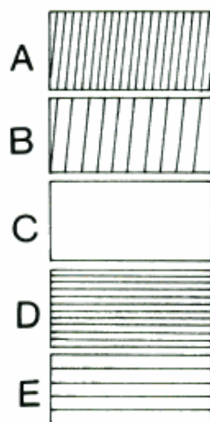
CPL W/12/004

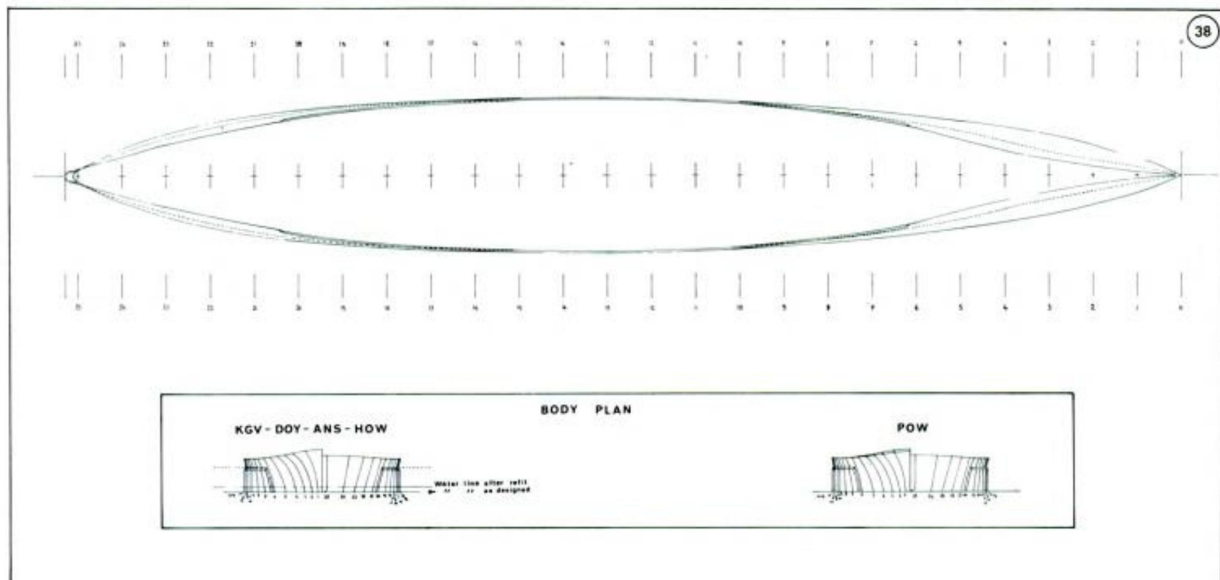




### KEY TO CAMOUFLAGE COLOURS

- A. 507A/G10 (dark grey)
- B. 507B/MS3 (medium grey/medium grey green)
- C. 507C/G45 (light grey)
- D. B5 (medium blue)
- E. B6 (light blue)
- F. MS4 (light grey/green)
- G. PB10 (dark ultramarine blue)
- H. MS2 (dark grey green)
- I. B20 (medium blue)





### KEY TO DETAIL DRAWINGS

1. Aerial trunk
2. Loading derrick
3. Single 20mm Oerlikon mounting
4. Saluting gun
5. Twin 20mm Oerlikon mounting
6. 44in searchlight
7. 20in signal projector
8. Pompom director pedestals
9. Flag lockers
10. Foremast
11. Halyards
12. Quad pompom
13. HACCS support
14. Pompom directors
15. Stowed position for head of crane
16. Forward boiler room ventilator
17. 8 barrellled pompom
18. Galley funnel
19. Aerial for Type 570
20. Crows nest
21. 13.7m (45ft) fast motor boat
22. 13.7m (45ft) motor launch
23. 7.6m (25ft) fast motor boat
24. 8.2m (27ft) whaler
25. 4.8m (16ft) fast motor dinghy
26. 4.2m (14ft) sailing dinghy
27. 9.75m (32ft) motor cutter
28. 10.9m (36ft) motor pinnace
29. Crane support
30. After boiler room ventilator
31. Admiral's sight
32. Aerial for Type 279
33. Aerial for FH 3 HF/DF
34. Aerial for Type 281
35. Lantern for Type 273 aerial
36. Aerial of Type 243 IFF for Type 279
37. Aerials for Type 91 TBS
38. Aerials for Type 86 TBS
39. Aerials for Type 87 TBS
40. Aerials for Type FV1 enemy raider transmission interception equipment
41. Aerial for Type 86M TBS
42. Aerial for Type 293
43. Aerial for Type 242 IFF for Type 293
44. Aerial for Type 242 IFF for Type 277
45. Aerial for Type 277
46. Aerials for 'Headache' equipment
47. Radio aerial
48. Aerial for Type 253 interrogator for Type 277
49. Aerial for Type 251 surface radar beacon
50. Aerial for Type 651
51. Aerial for Type 281B
52. Anemometer

**Note:** The numbers in brackets on the detail drawings refer to the numbers of the outboard profiles which have appeared in *Warship 9* to *12*. R on the drawings means a detail exclusive to a particular ship.





## DETAILS

