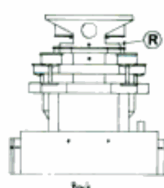
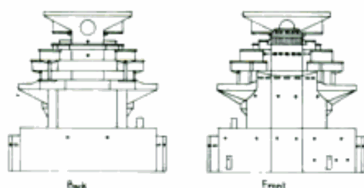
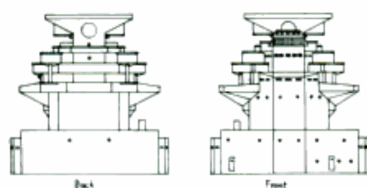
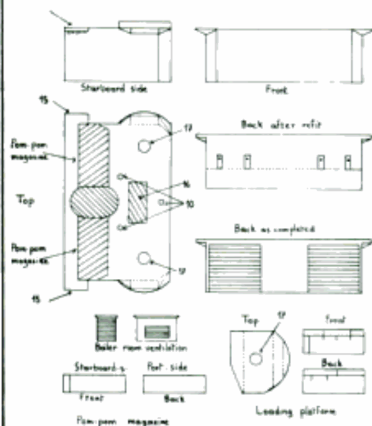
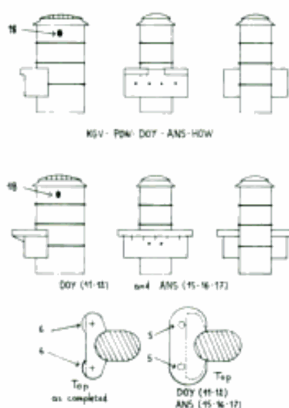
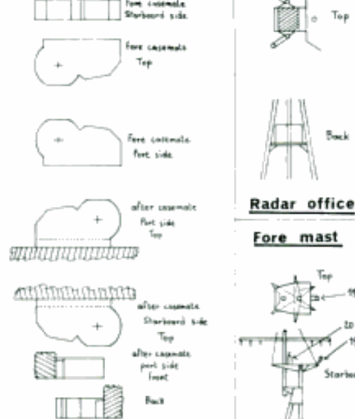


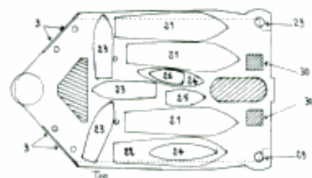
C DOY (N-11)

D ANS (15-16-17)

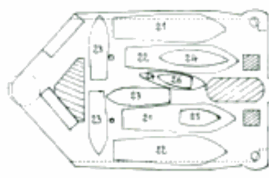
E HOW (20-21-22)

**Aircraft hangar****Fore funnel****5-25" casemate****Boat deck**

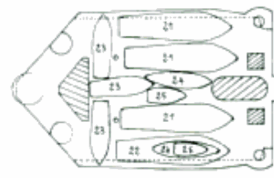
KGV (1-2-3)



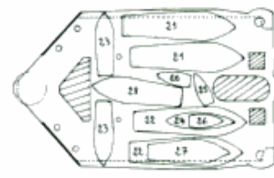
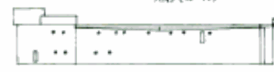
POW (6-7)



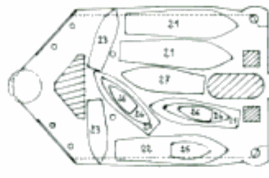
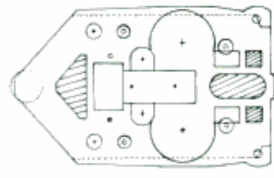
DOY (8-9-10)



ANS (15-16)

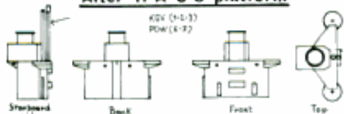


HOW (18-19)

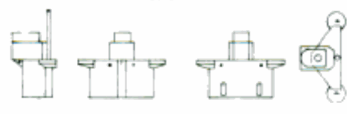
**After No 1 platform (after refit)****After H-A-C-S platform**

KGV (1-3-3)

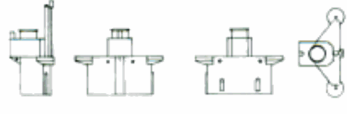
POW (4-7)



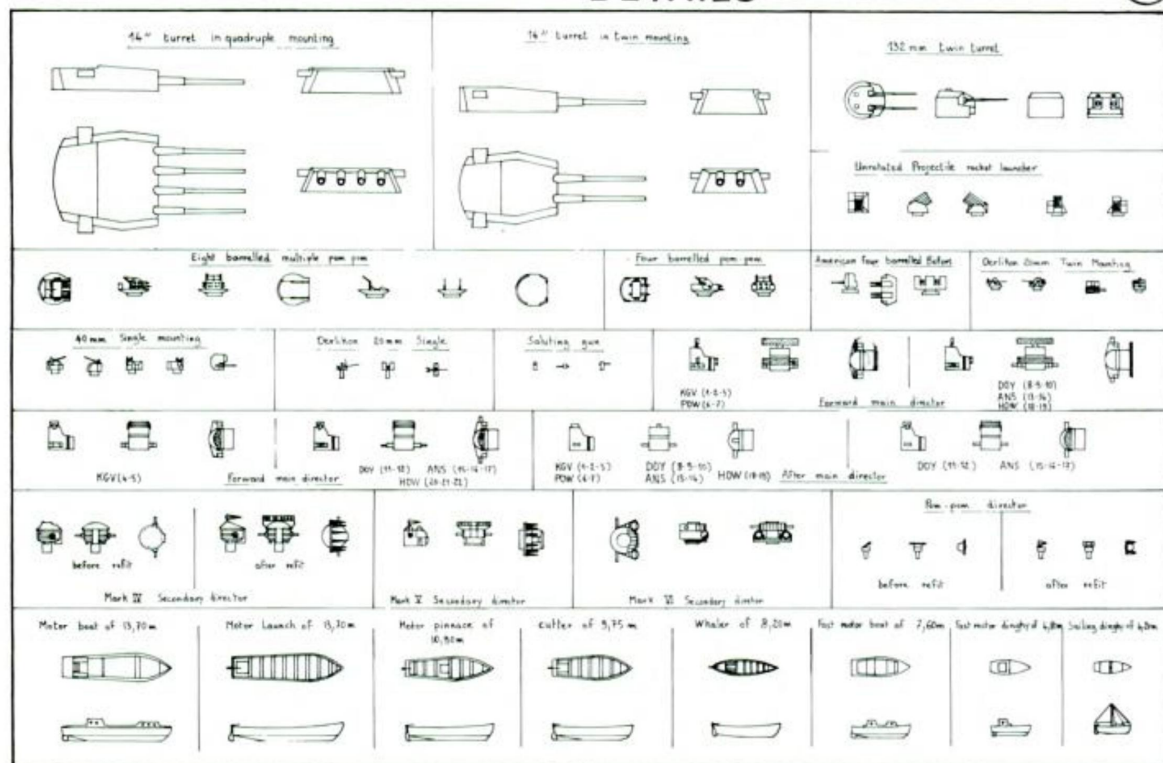
KGV (5-6)



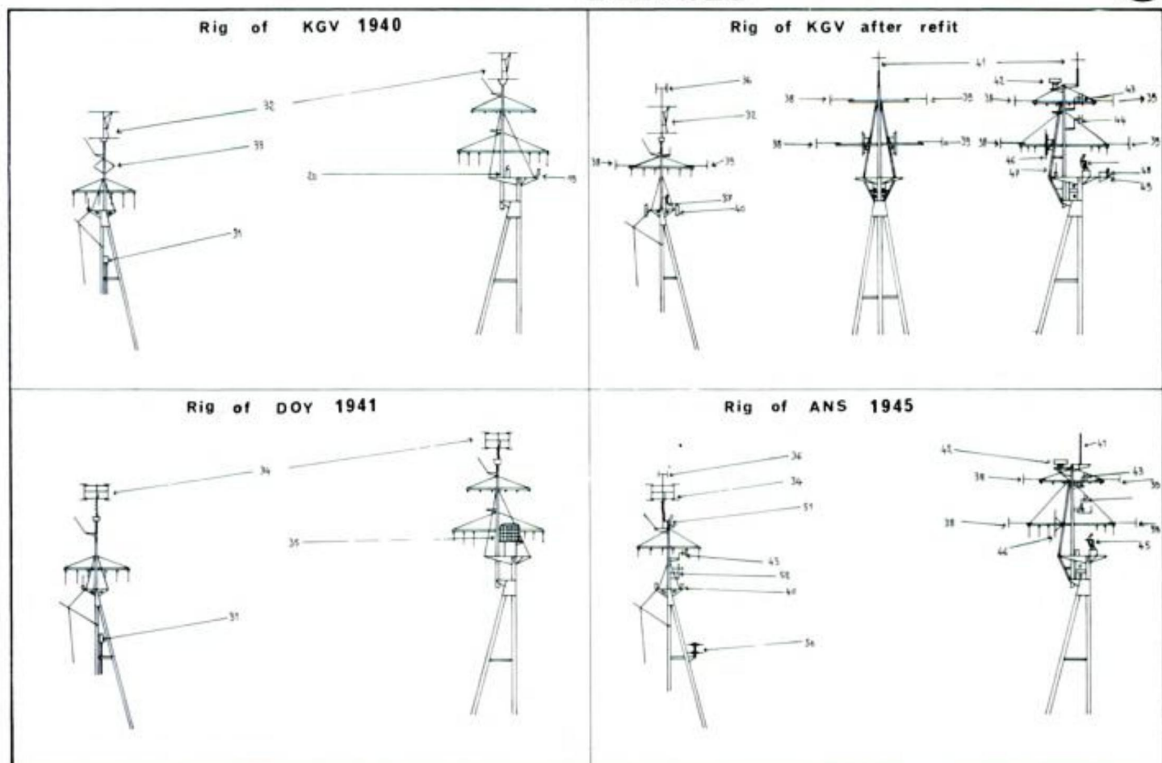
DOY (8-9)



DETAILS



DETAILS



Anson leaving the Gareloch on 18 December 1957 at the beginning of her journey to Faslane to be broken-up
CPL W/12/003

1 *Howe* on the 26 May 1944; the same camouflage was carried by *Anson* and *King George V* but there were several subtle differences in the details of the pattern applied to each ship

MoD

2 *Anson* departs Malta for Portsmouth, 23 July 1946

A & J Pavia

3 *Howe* arrives at Inverkeithing for breaking-up 2 June 1958

T W Ward



1



2