

Regio



**S**iovanni

della stessa Classe: "Alberto  
"Armando Diaz"

Costruz.<sup>ne</sup>: R. C.

Dislocam<sup>to</sup>: 5069 to

Armamento: 8 canno  
16 mitra  
("DIAZ" e

Apparato motore: T

o Incrociatore  
delle  ande

Scala 1 : 100

Classe "Condottieri ..

to di Giussano, .. - "Alberico da Barbiana



"Lu

Cantiere M.M. - Castellamare di Stabia

ions. - Dimensioni : mt. 169,3 (166,7) - 15

oni 152 <sup>mm</sup> / 8 calibri - 6 cannoni 100 <sup>mm</sup> / 4

ragl.<sup>re</sup> a.a. - 4 lanciasil. binati 533 <sup>mm</sup> - 2 l

e "CADORNA" : 1 catapulta, 2 aerei) - sistemaz<sup>ne</sup>

Turbine Belluzzo ad ingranaggi - 6 caldaie -

("DIAZ" e "CADORNA" turbine Parsons)

Velocità : 37 nodi (1 nodo = ca. 1853 mt.)

# Diere

ano., - "Bart.<sup>mco</sup> Colleoni."  
Luigi Cadorna.

1928 - 1931

15,5 - 4,3

1/47 cal. a.a. binati -

2 lanciabombe prof.<sup>12</sup>

pos. mine.

95.000 HP - 2 eliche

VIII

VII

Opera

VI

V

IV

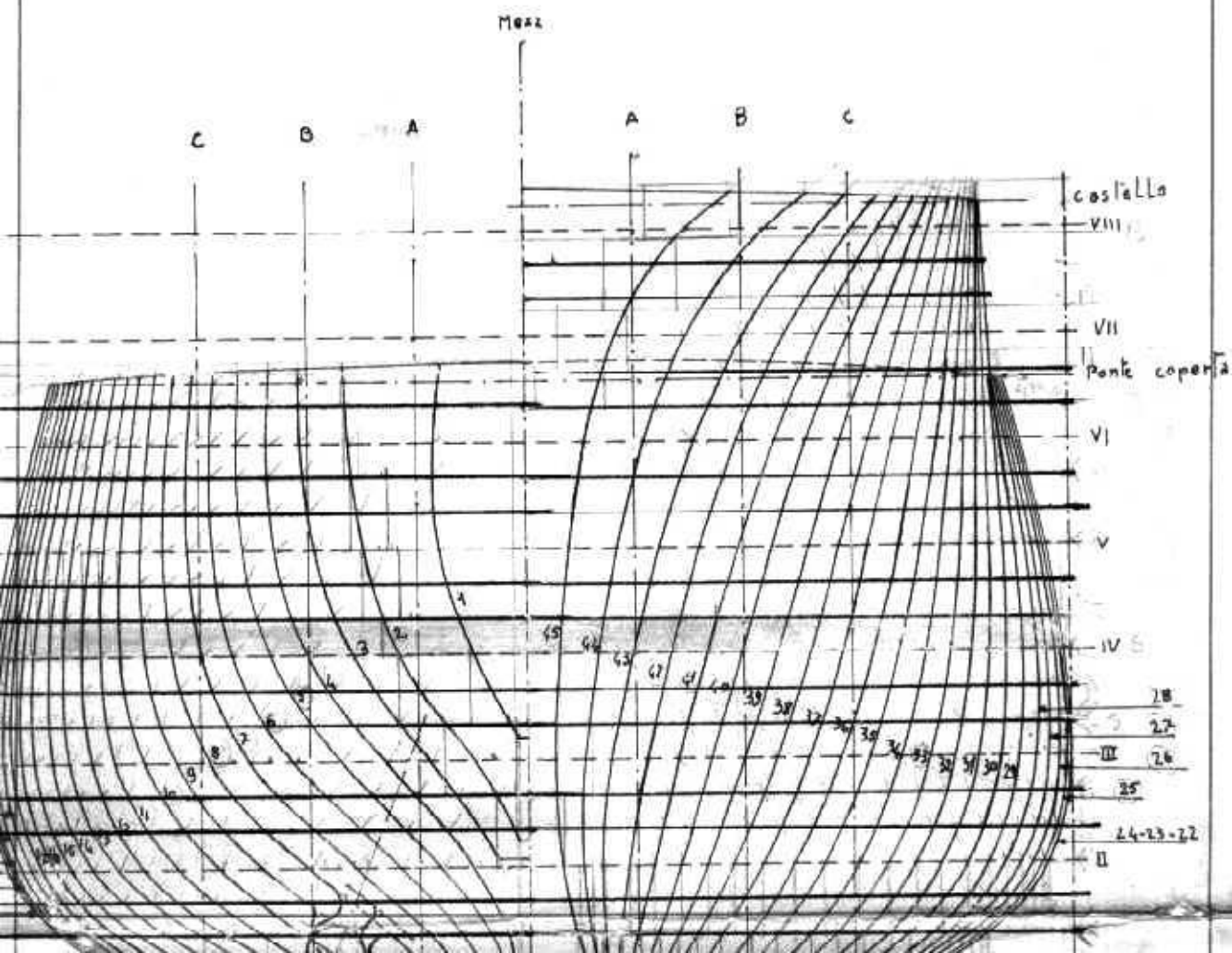
III

II

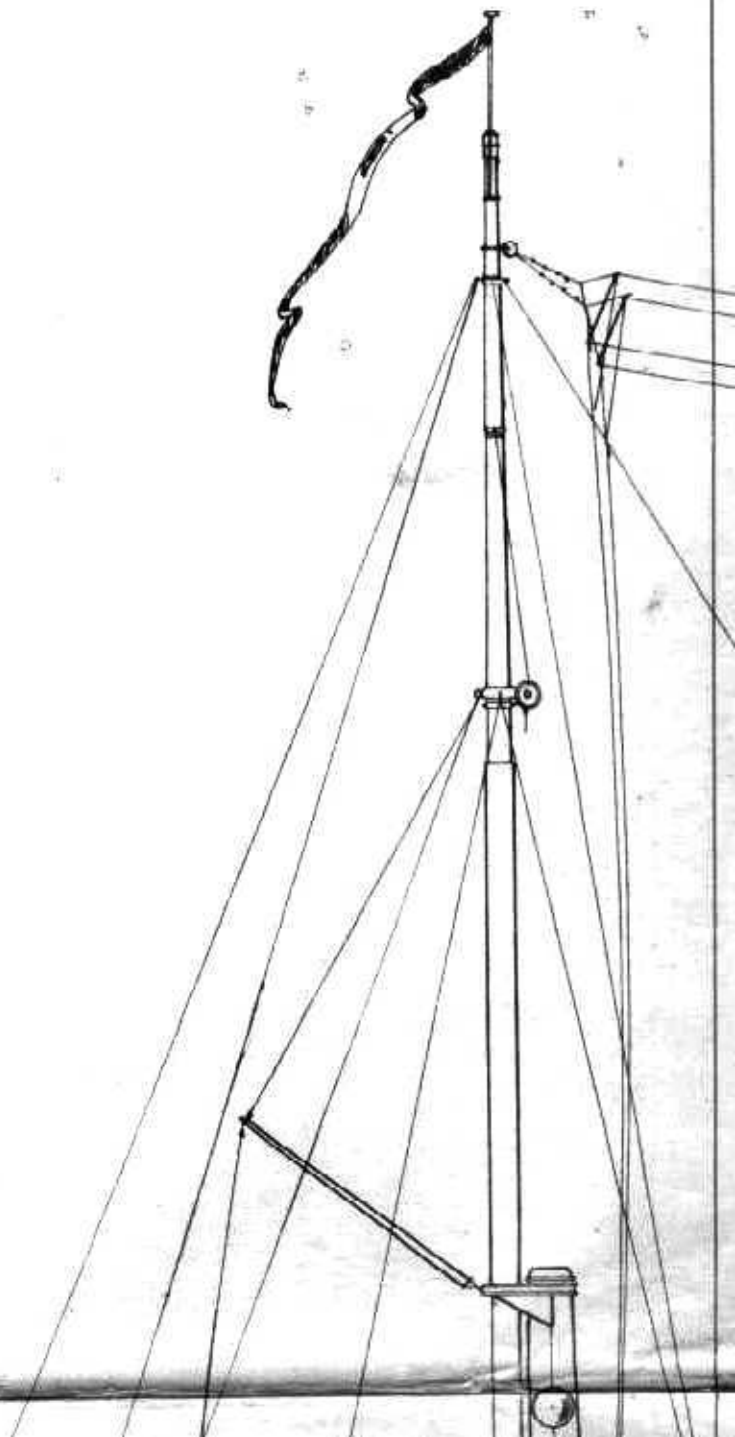
I

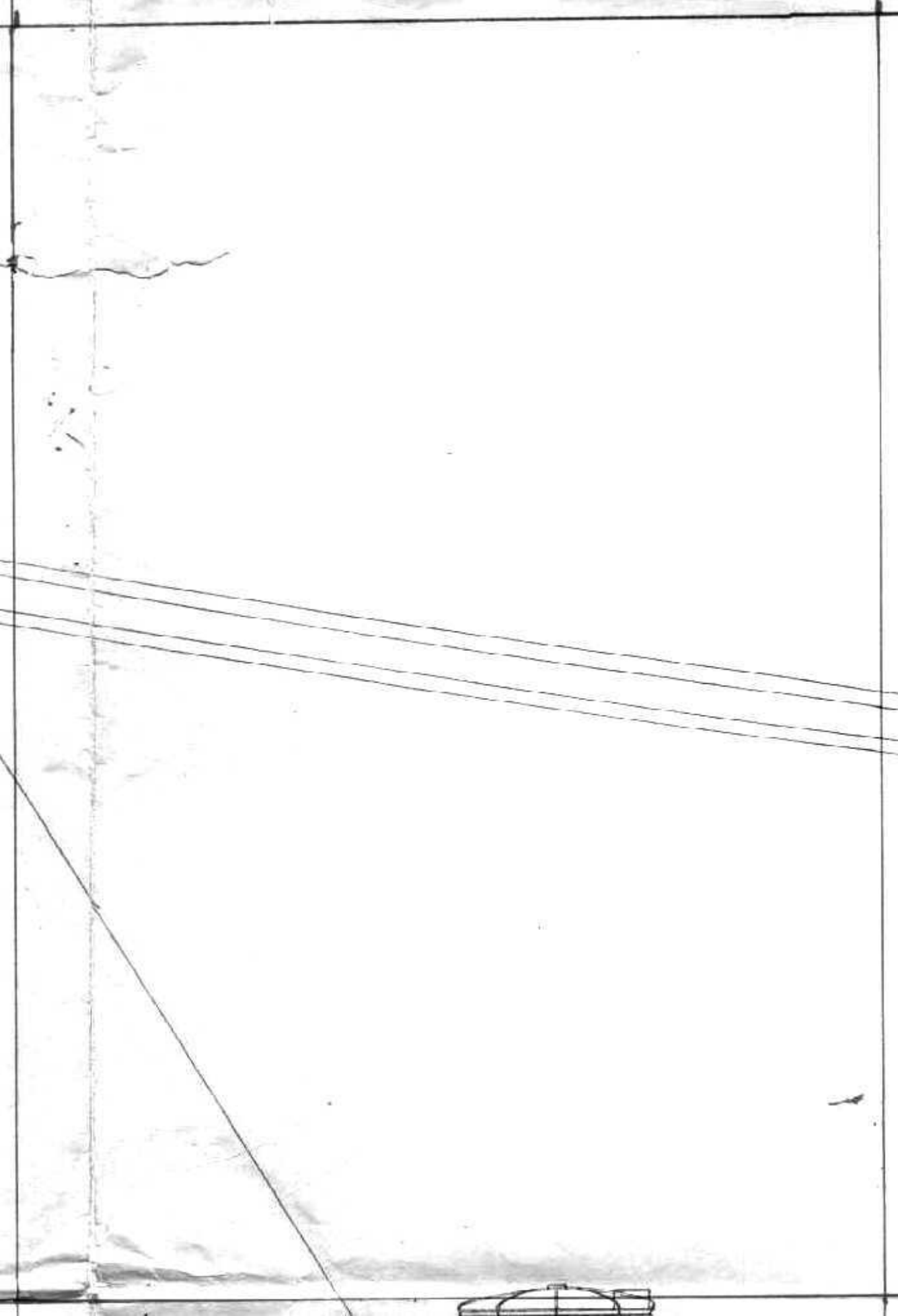
0

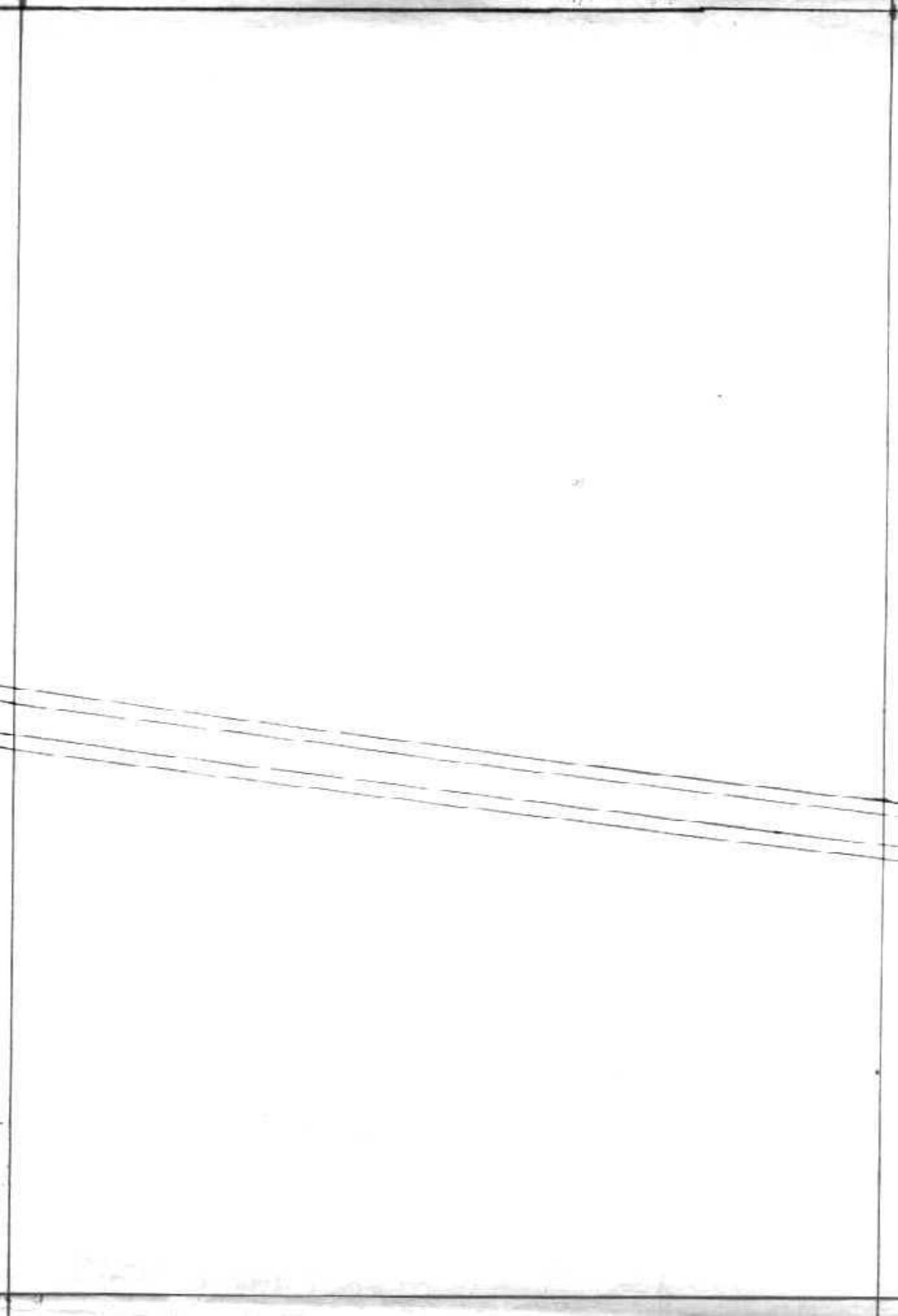
2-23-24

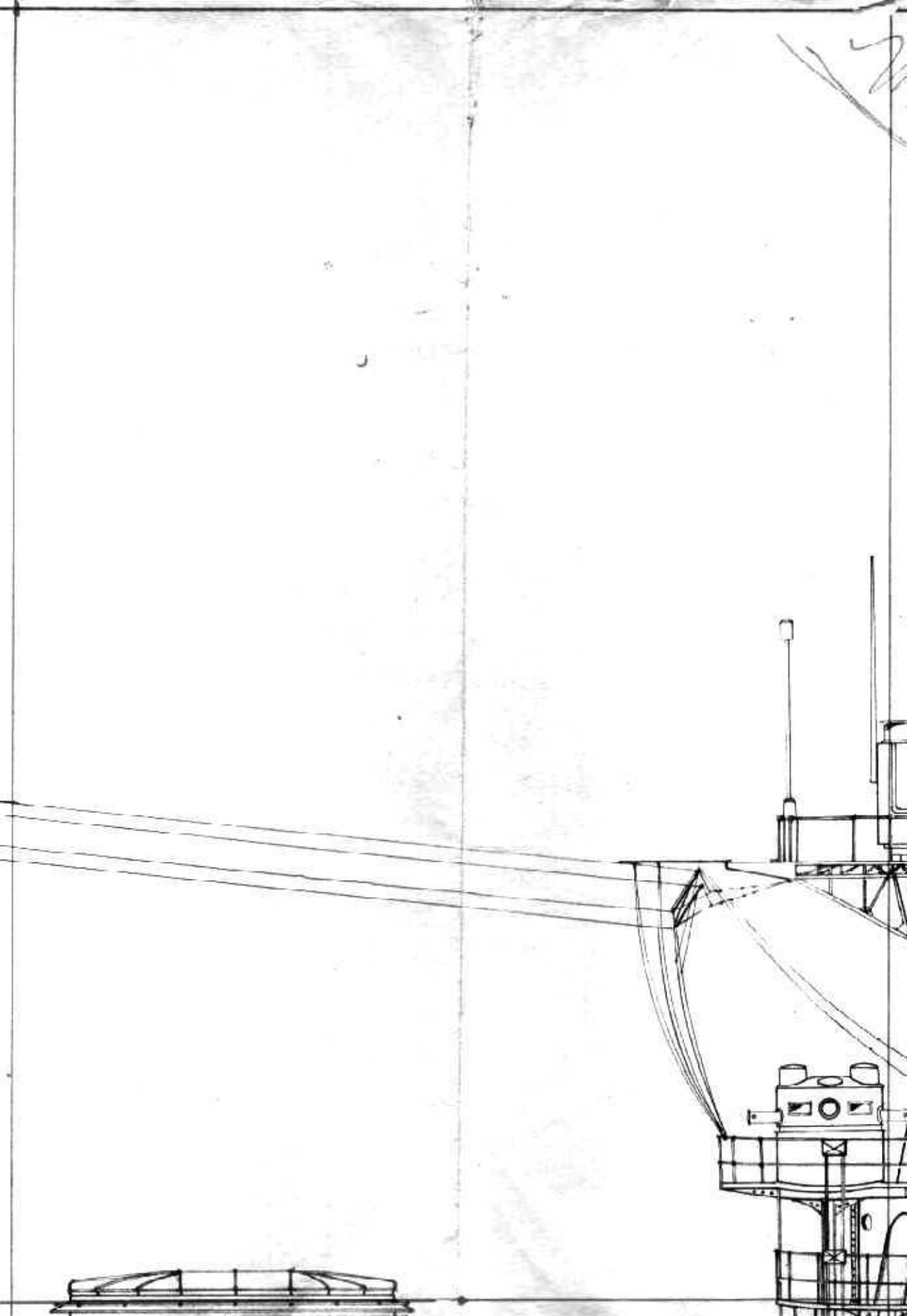


33377 ANNA MARIA

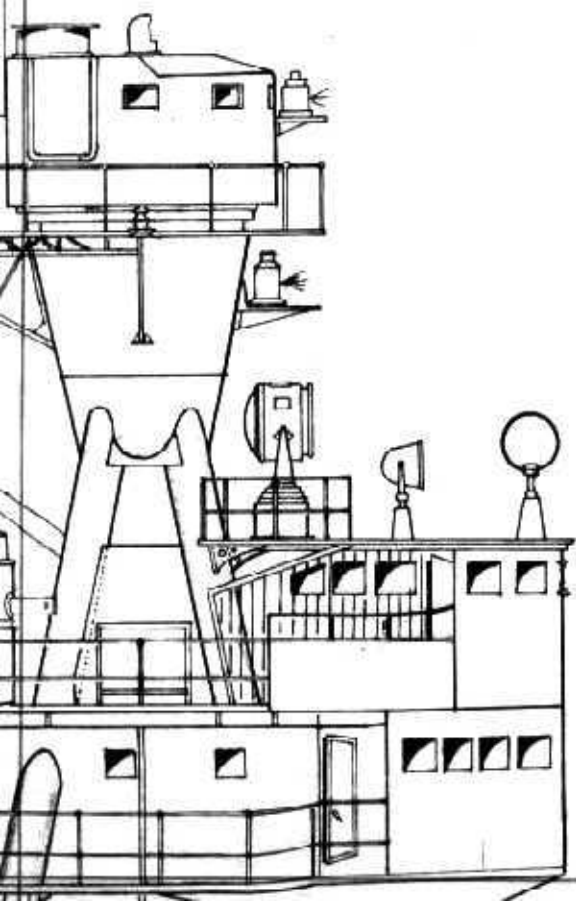


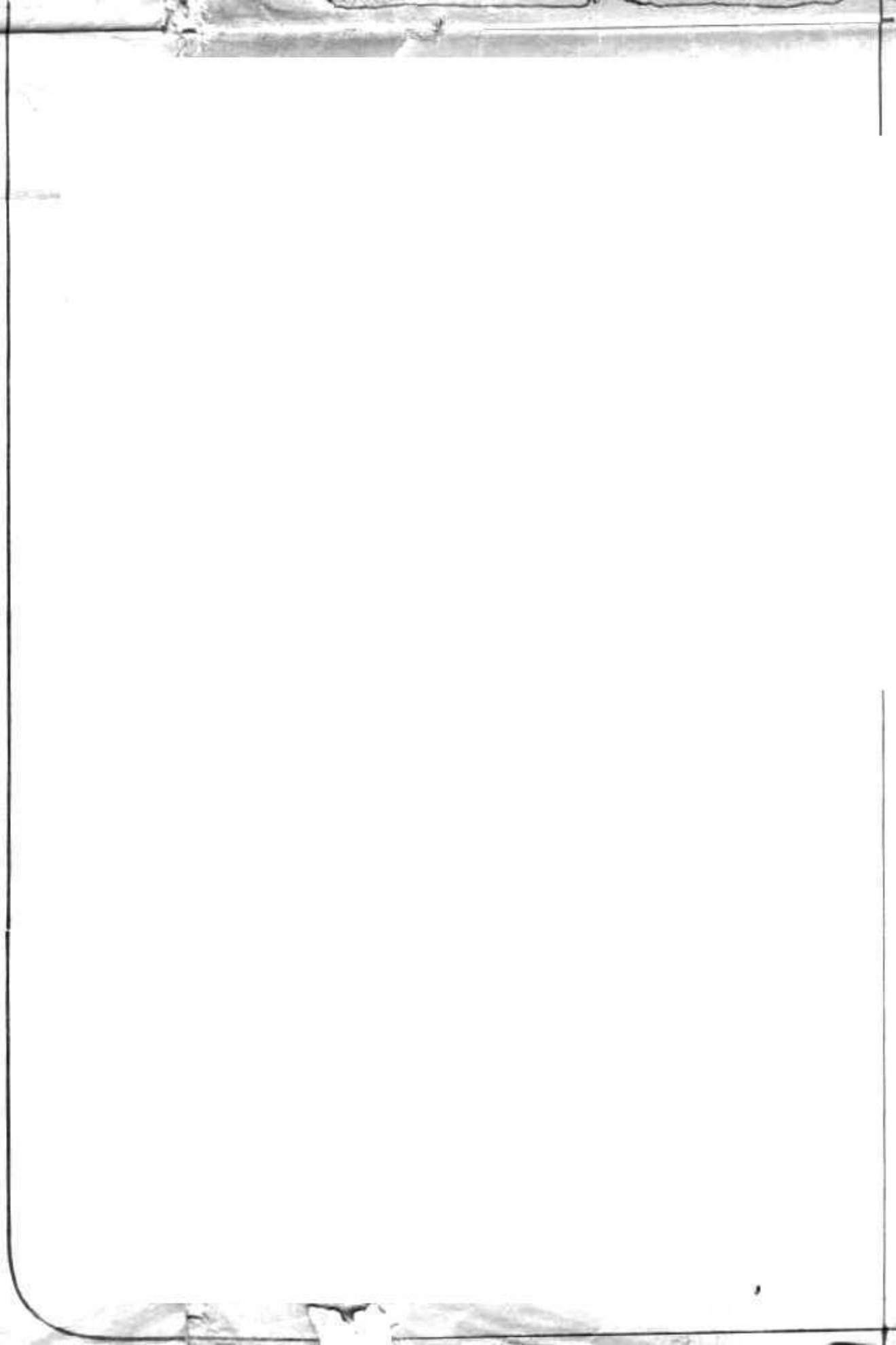


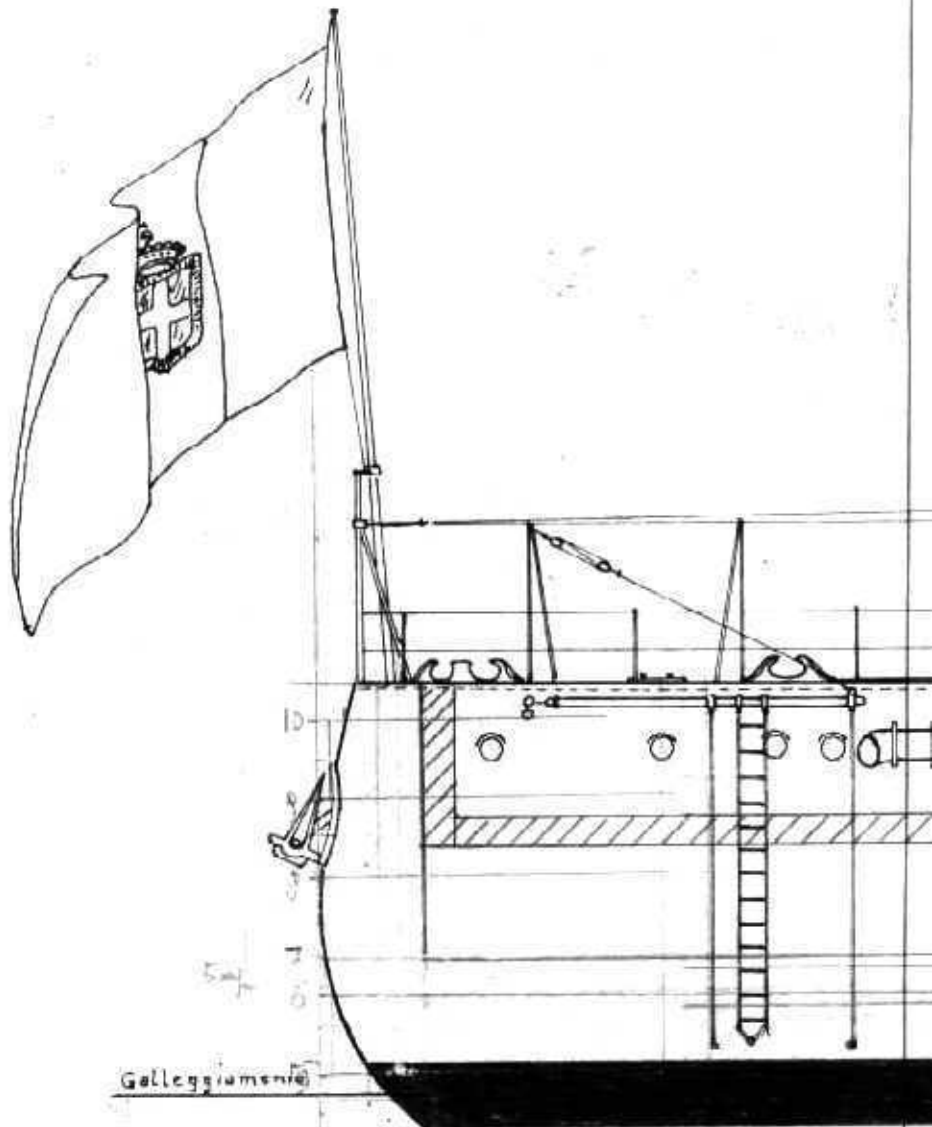




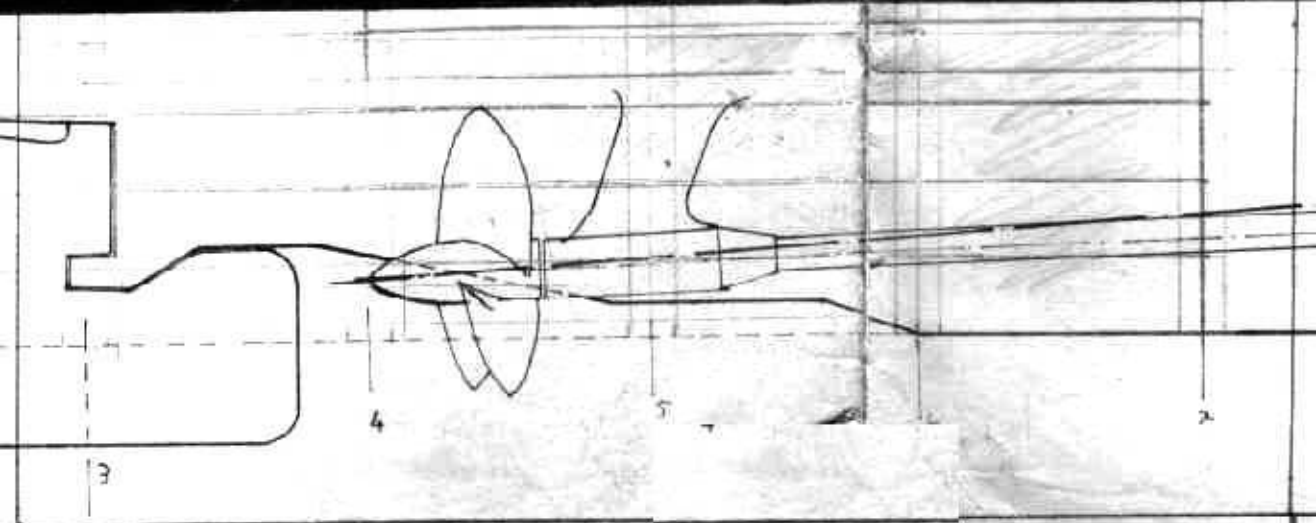
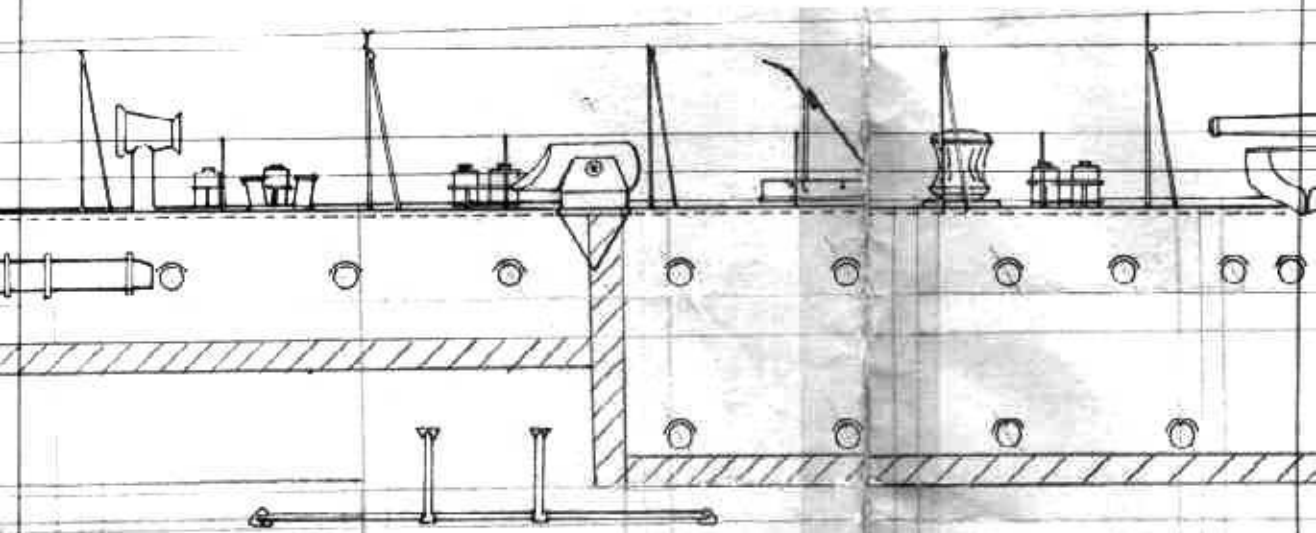


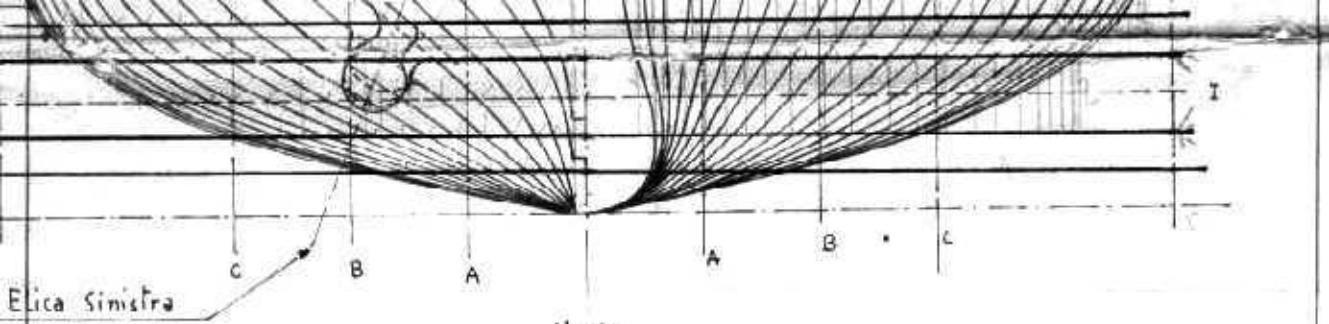




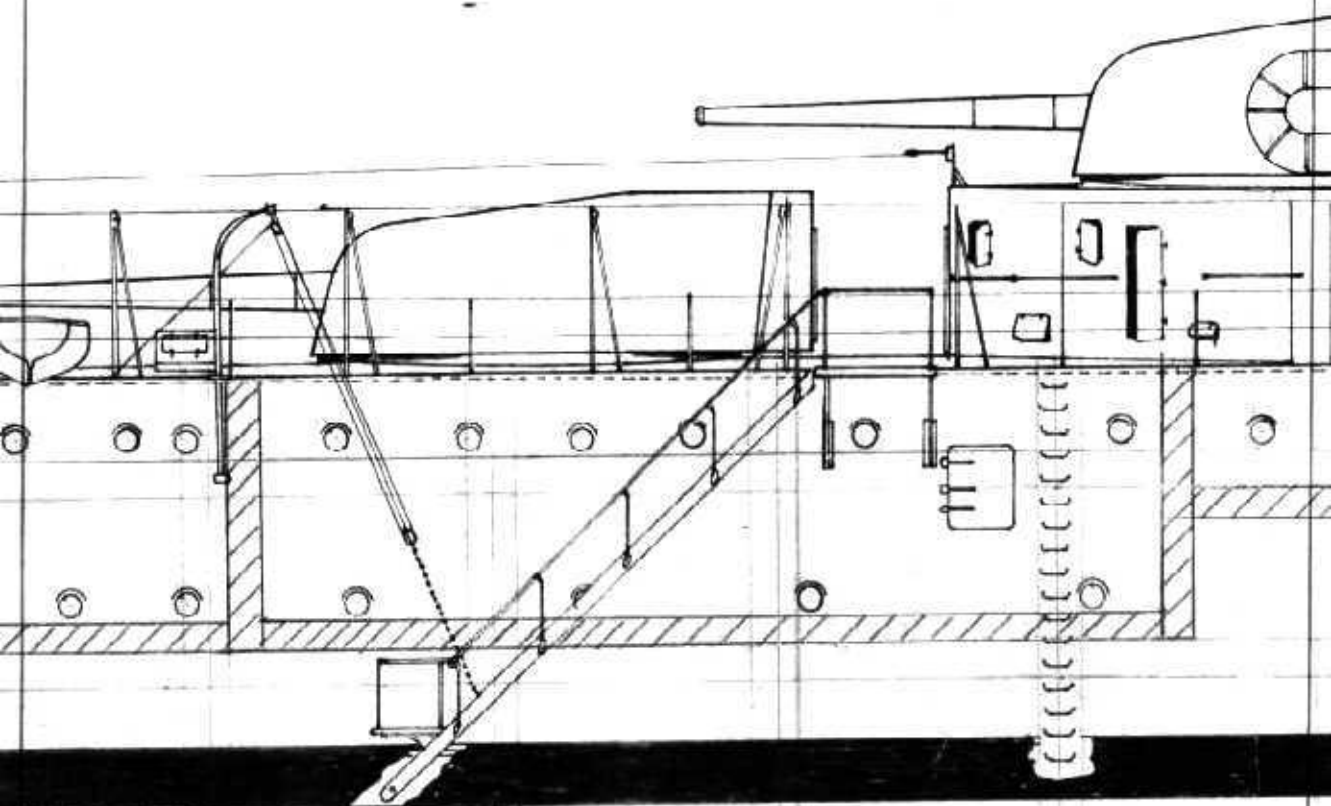


Galleggiamento

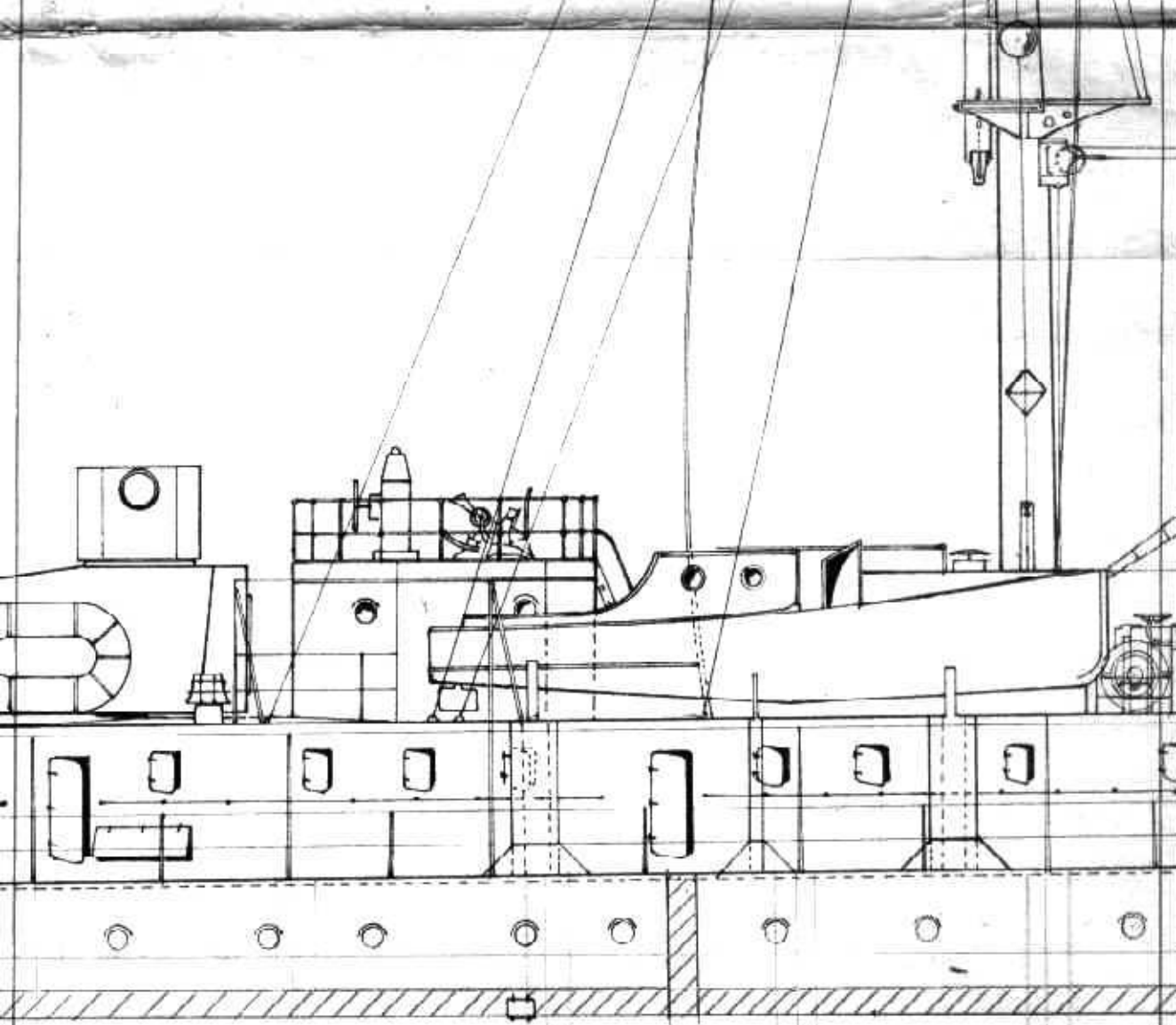




Mezz.  
ORDINATE SCALA  $\frac{1}{100}$



8 9 10 11



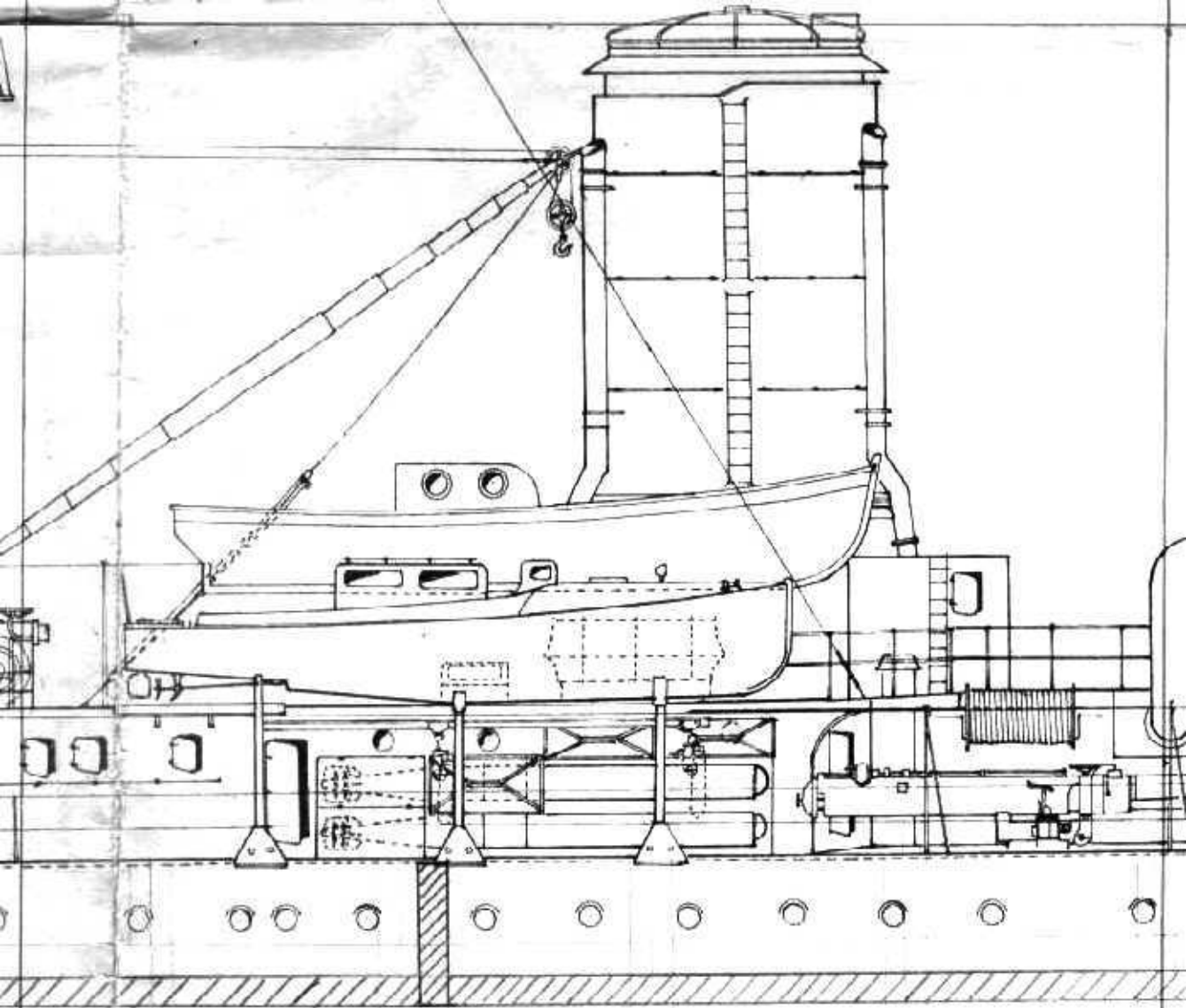
12

13

14

15

16



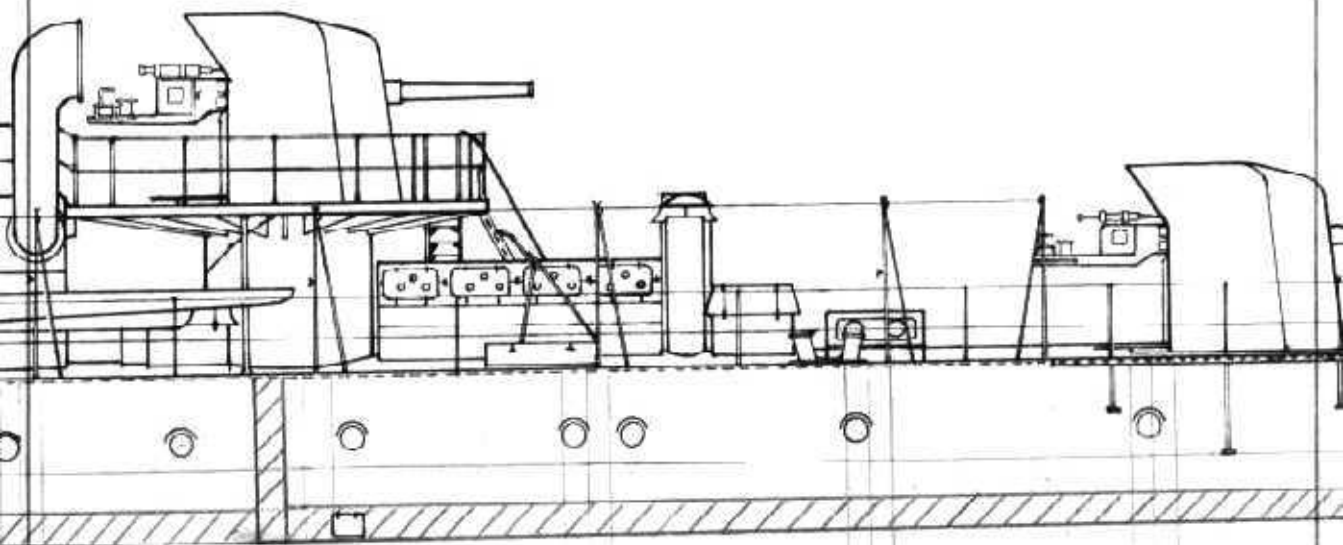
17

18

19

20

21



21

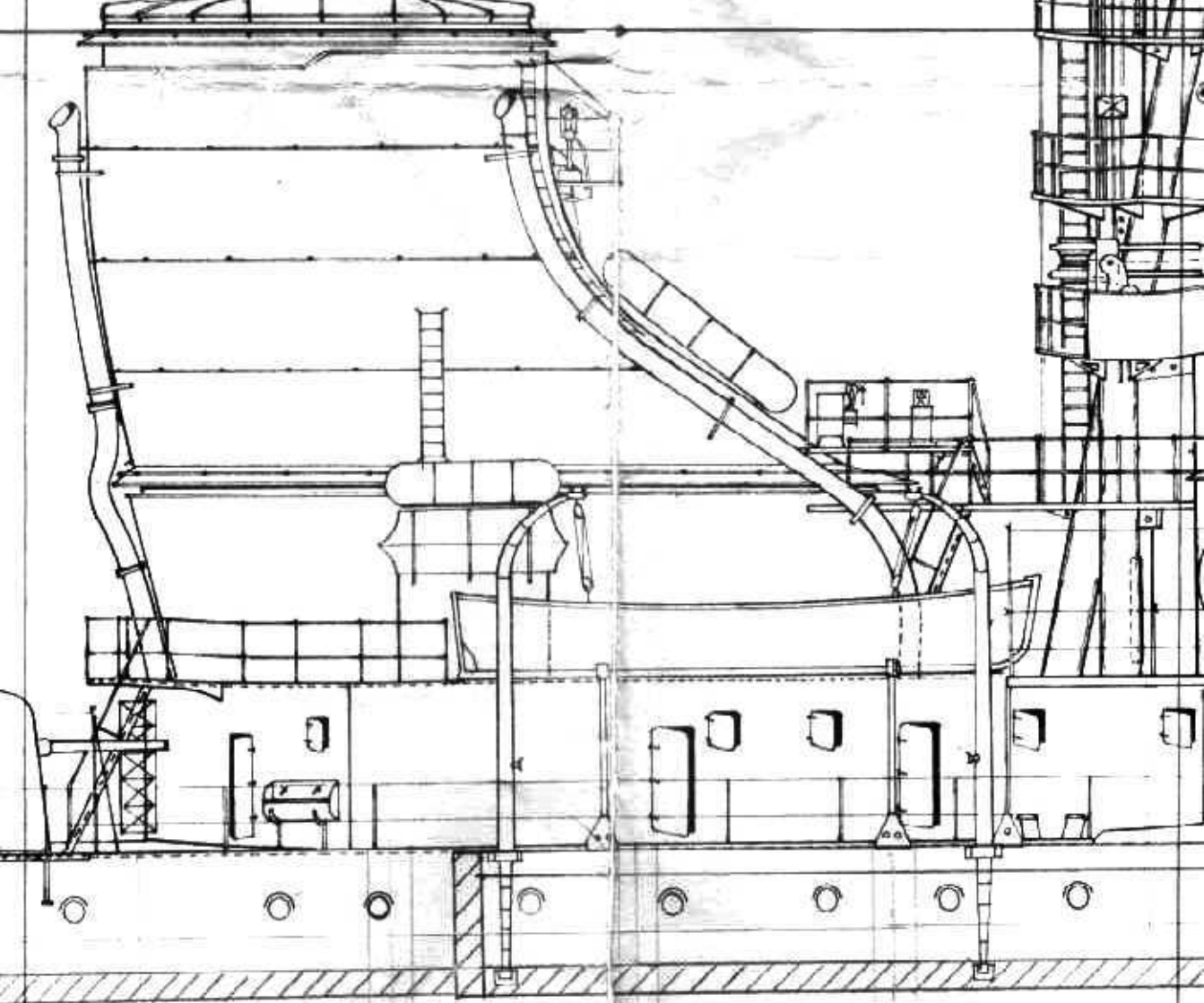
22

23

24

25





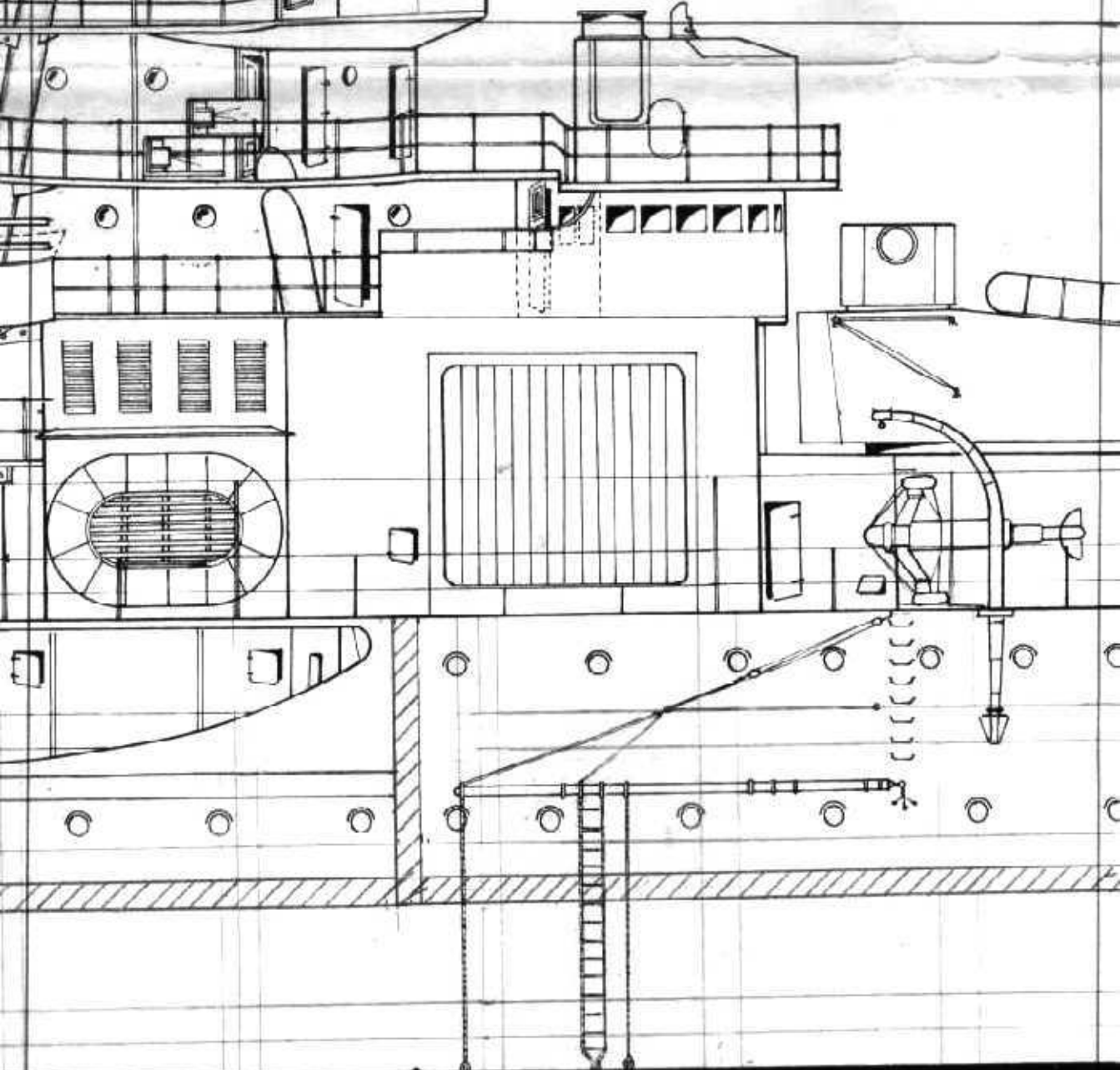
26

27

28

29

30



30

31

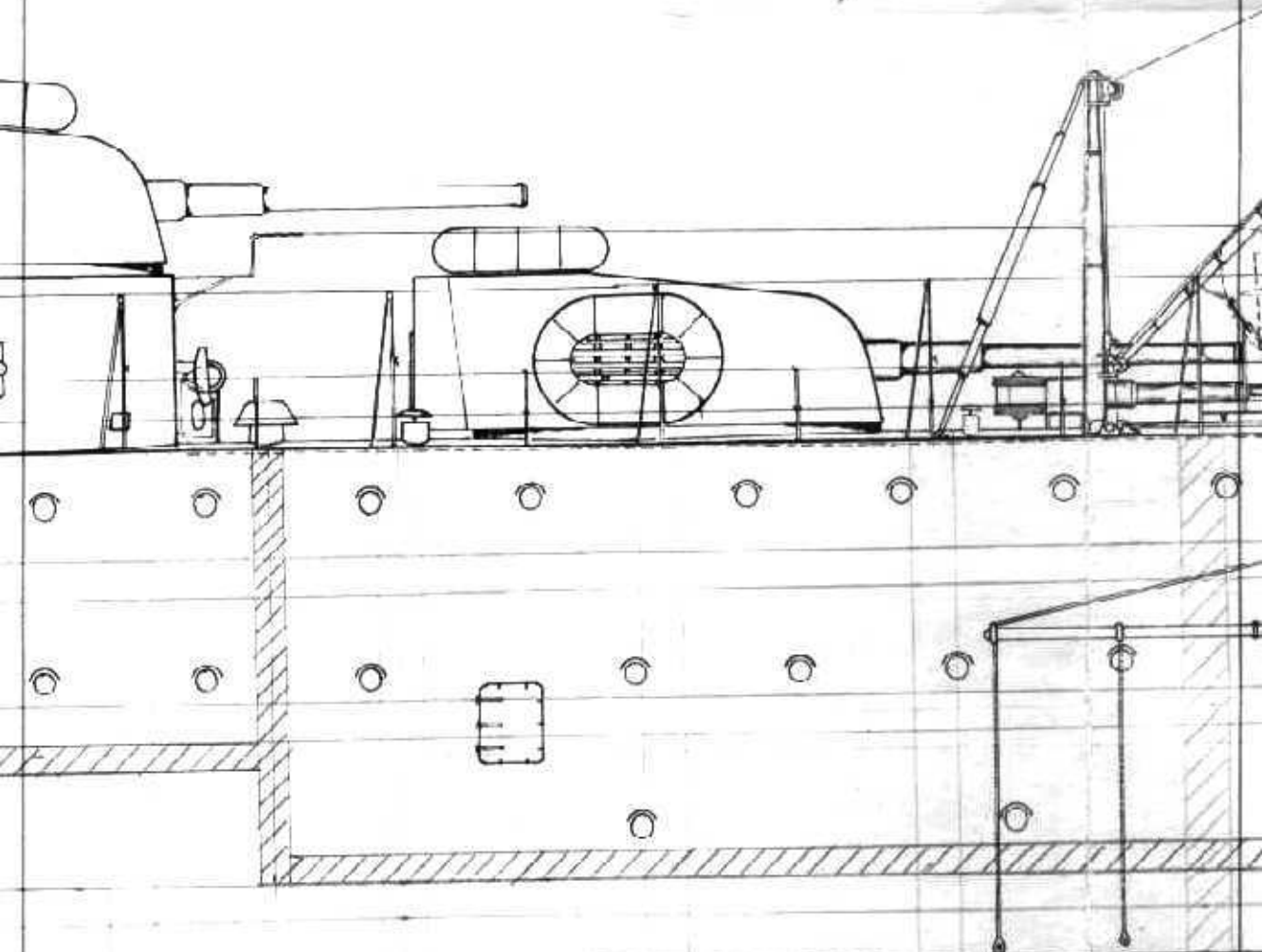
32

33

34

72.5  
15.5  
15.0

37  
37.0  
71.2



55

34

32

38

39

